

Premier Collection

THIELSEN PREMIER

CANYON TRAILS

🏠 4 Bedrooms

🚿 2.5 Bathrooms

🏠 2,373 Sq. Ft.

🚗 2 Car Garage



T - Traditional, 2 Car



U - Craftsman, 2 Car



V - Farmhouse, 2 Car



- Primary Suite on Main Level
- Walk-in Closet in Primary Suite
- Open Great Room with Gas Fireplace
- Large Upstairs Bonus Room / Loft
- Kitchen Island

- Kitchen Pantry
- 9 Foot Ceilings throughout Main Level
- Quartz Countertops throughout Home
- Stainless Steel Appliances
- Covered Front Porch and Patio

 **MonteVista Homes &
PacWest Realty Group**

541-640-5225

In a continual effort to improve our product, MonteVista Homes reserves the right to change product design, features, materials, floor plans, specifications, prices and terms without prior notice. Square footage stated or implied are approximate. Images may be representative of future home and show what's possible not what's included. Seller is a licensed real estate broker in the State of Oregon. CCB#203709



THIELSEN PREMIER

CANYON TRAILS

🏠 4 Bedrooms

🚿 2.5 Bathrooms

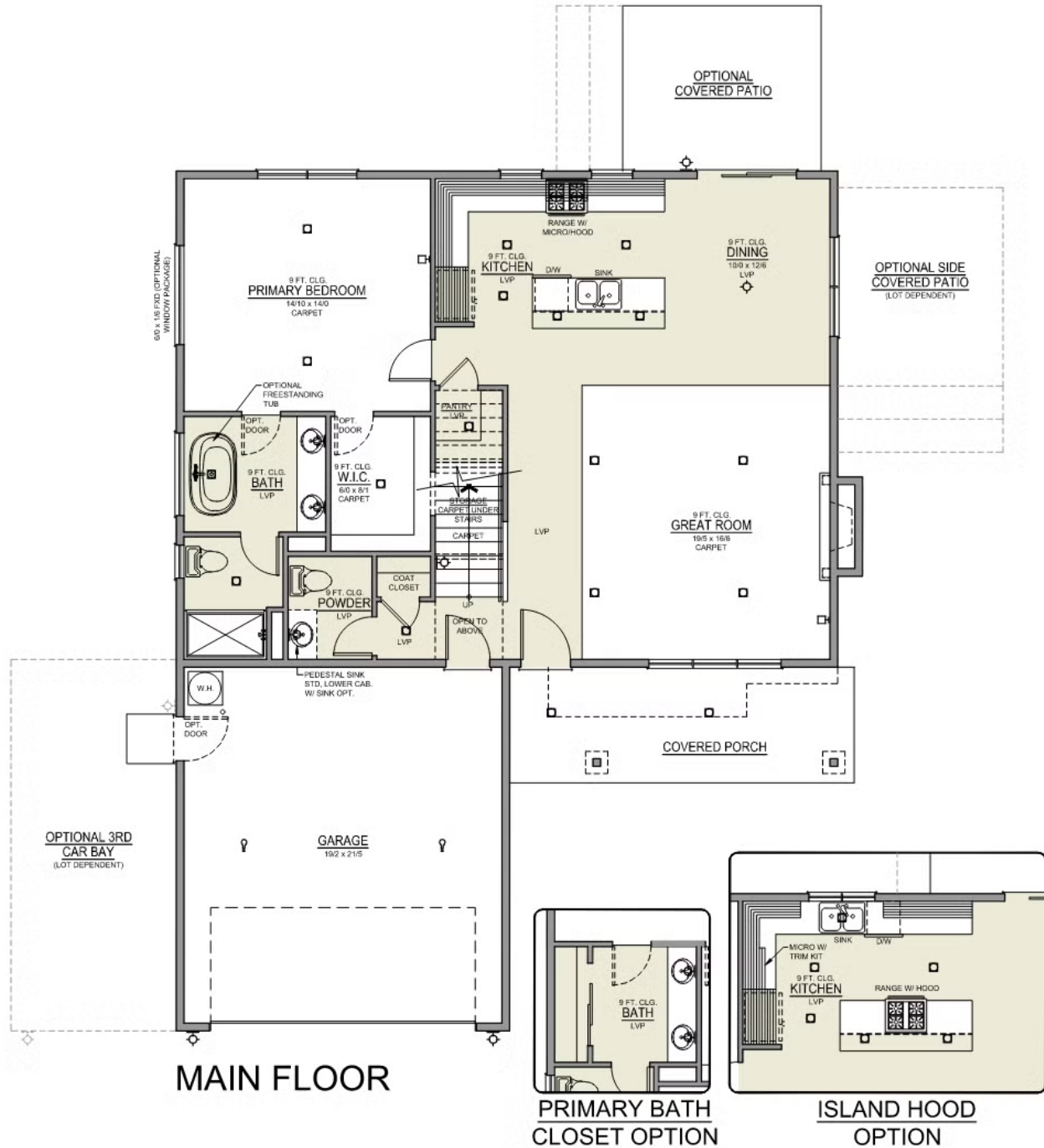
🏠 2,373 Sq. Ft.

🚗 2 Car Garage

Thielsen 2-Car

2,373 Sq. Ft.

4 Bedroom, 3 Bath



THIELSEN PREMIER

CANYON TRAILS

🛏️ 4 Bedrooms

🚿 2.5 Bathrooms

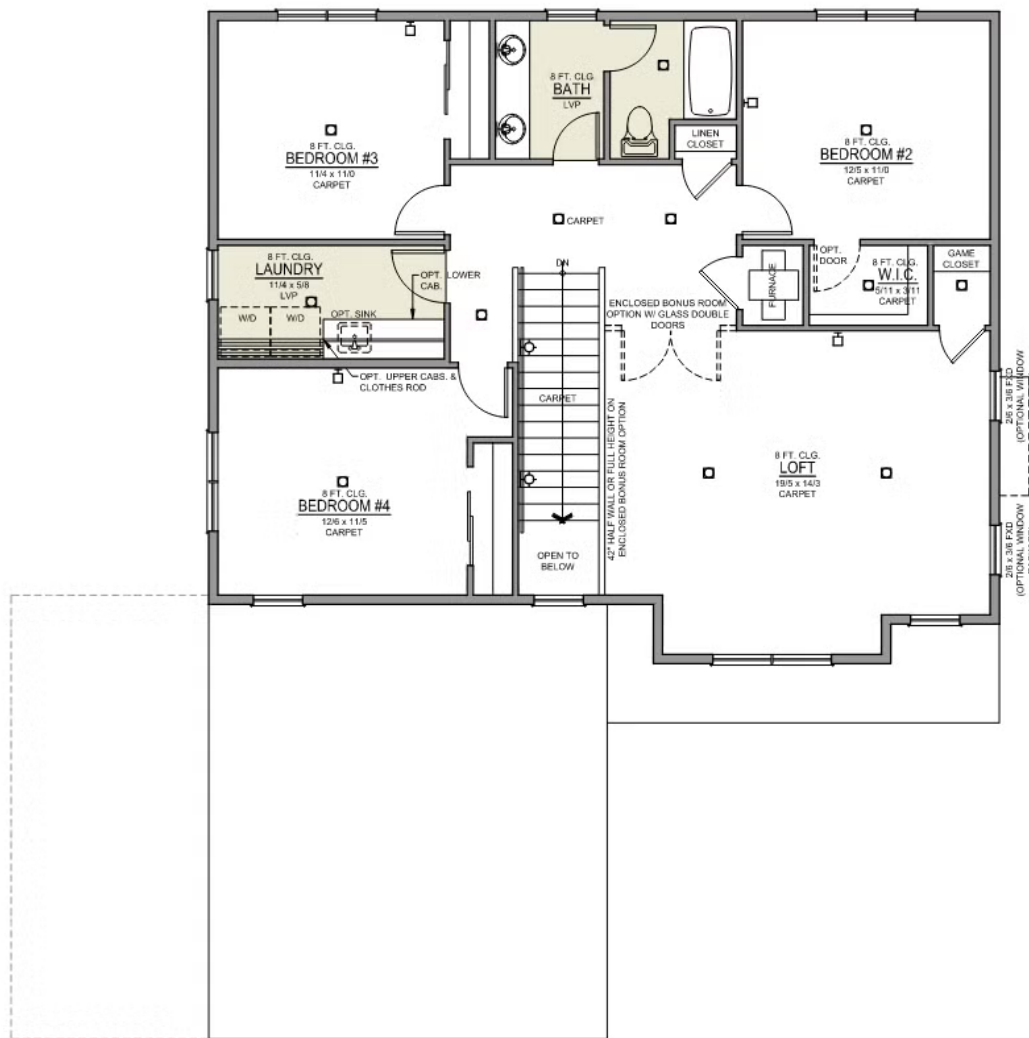
🏠 2,373 Sq. Ft.

🚗 2 Car Garage

Thielsen 2-Car

2,373 Sq. Ft.

4 Bedroom, 3 Bath



UPPER FLOOR