

Distinct Collection

# THIELSEN DISTINCT

 4 Bedrooms

 2.5 Bathrooms

 2,373+ Sq. Ft.

 3 Car Garage



X - Craftsmen



Y - Modern



Z - Farmhouse



- Primary Suite on Main Level
- 9 Foot Ceilings Both Levels
- Grand Upstairs Bonus Room / Loft
- Gourmet Cooks Kitchen Island Range
- Quartz Kitchen Countertops with Full-Height Backsplash
- Farmhouse Style Sink in Kitchen

- 8 Foot Doors
- Upgraded Cabinets
- Oversized Windows
- Tile Shower in Primary Bathroom
- Free-Standing Soaking Tub
- Smart Home Ready

 **MonteVista Homes &  
PacWest Realty Group**

[www.MtVistaHomes.com](http://www.MtVistaHomes.com)

*In a continual effort to improve our product, MonteVista Homes reserves the right to change product design, features, materials, floor plans, specifications, prices and terms without prior notice. Square footage stated or implied are approximate. Images may be representative of future home and show what's possible not what's included. Seller is a licensed real estate broker in the State of Oregon. CCB#203709*



Distinct Collection

# THIELSEN DISTINCT

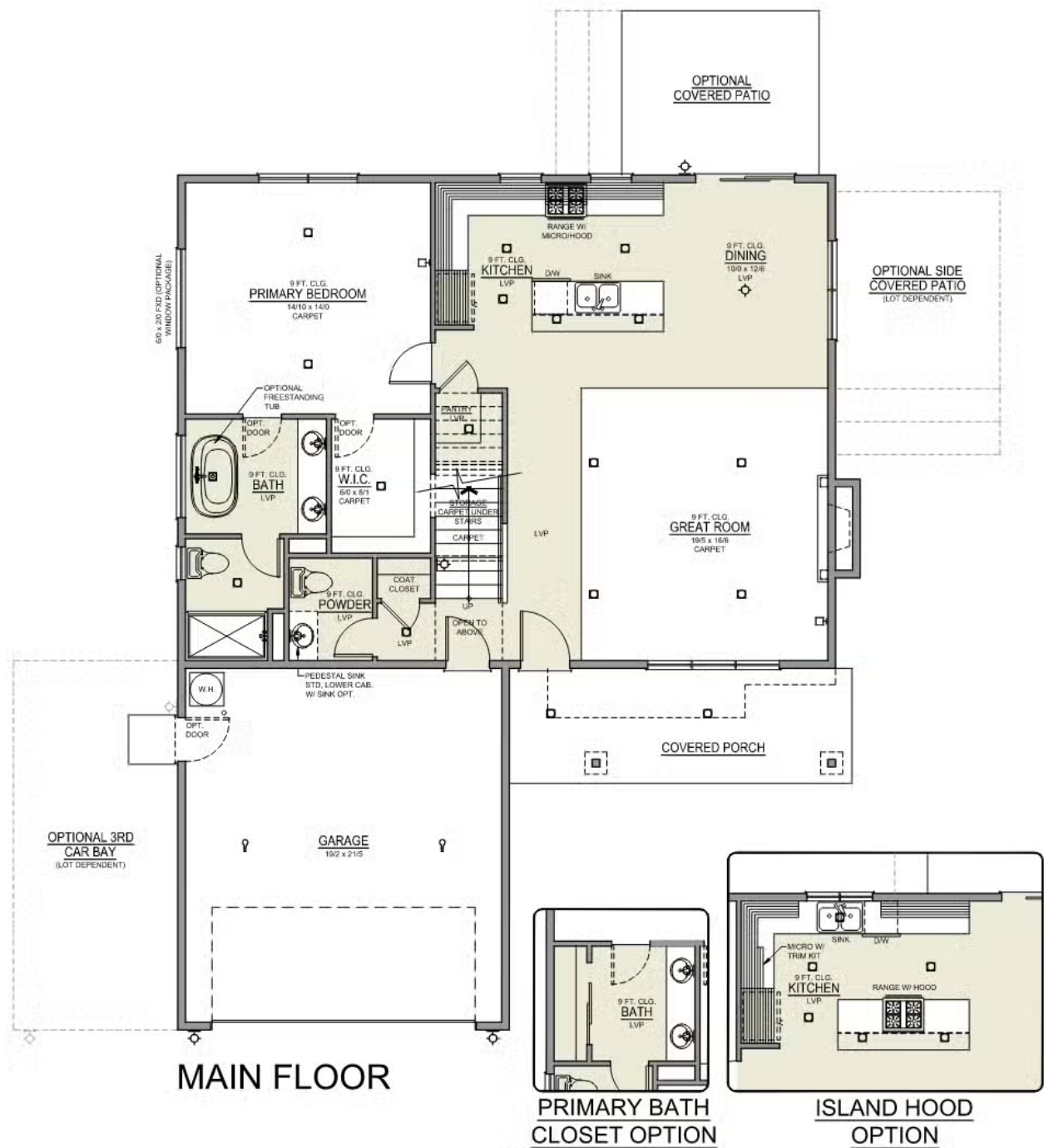
 4 Bedrooms

 2.5 Bathrooms

 2,373+ Sq. Ft.

 3 Car Garage

Thielsen 2-Car  
2,373 Sq. Ft.  
4 Bedroom, 3 Bath



Distinct Collection

# THIELSEN DISTINCT

 4 Bedrooms

 2.5 Bathrooms

 2,373+ Sq. Ft.

 3 Car Garage

Thielsen 2-Car  
2,373 Sq. Ft.  
4 Bedroom, 3 Bath



UPPER FLOOR