

Premier Collection

# Douglas Premier

Available in 3 Communities

 4 Bedrooms

 3 Bathrooms

 2,427 Sq. Ft.

 2 Car Garage



U - CRAFTSMAN



V - FARMHOUSE



- 9 Foot Ceilings throughout Main Level
- Great Room with Gas Fireplace
- Kitchen Island with Sink
- Kitchen Pantry

- Upstairs Bonus Room / Loft
- Main Level Guest Suite / Den
- Quartz Countertops throughout Home
- Stainless Steel Appliances

## MonteVista HOMES

*In a continual effort to improve our product, MonteVista Homes reserves the right to change product design, features, materials, floor plans, specifications, prices and terms without prior notice. Square footage stated or implied are approximate. Images may be representative of future home and show what's possible not what's included. Seller is a licensed real estate broker in the State of Oregon. CCB#203709*



Premier Collection

# Douglas Premier

Available in 3 Communities

 4 Bedrooms

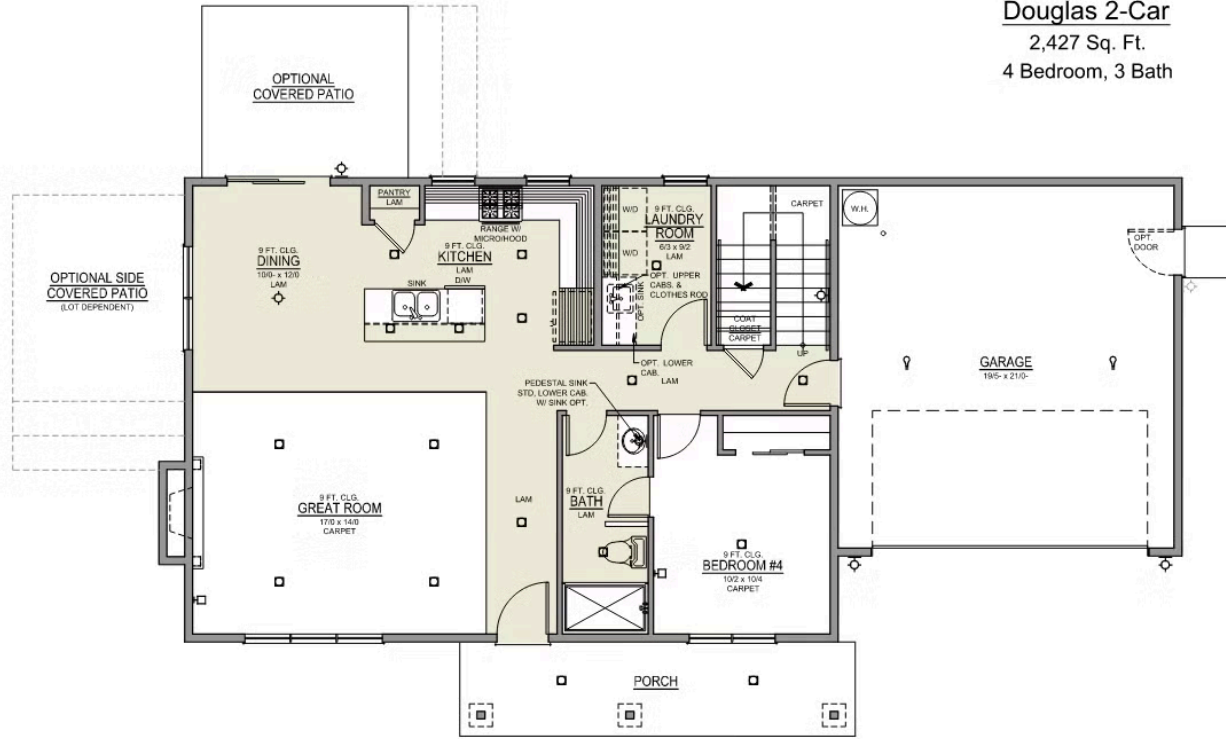
 3 Bathrooms

 2,427 Sq. Ft.

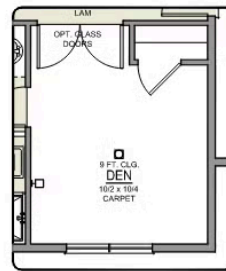
 2 Car Garage

## Douglas 2-Car

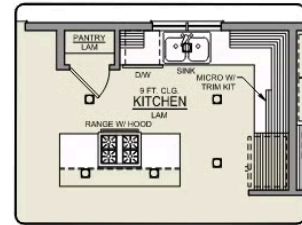
2,427 Sq. Ft.  
4 Bedroom, 3 Bath



MAIN FLOOR



DEN OPTION



ISLAND HOOD OPTION

Premier Collection

# Douglas Premier

Available in 3 Communities

 4 Bedrooms

 3 Bathrooms

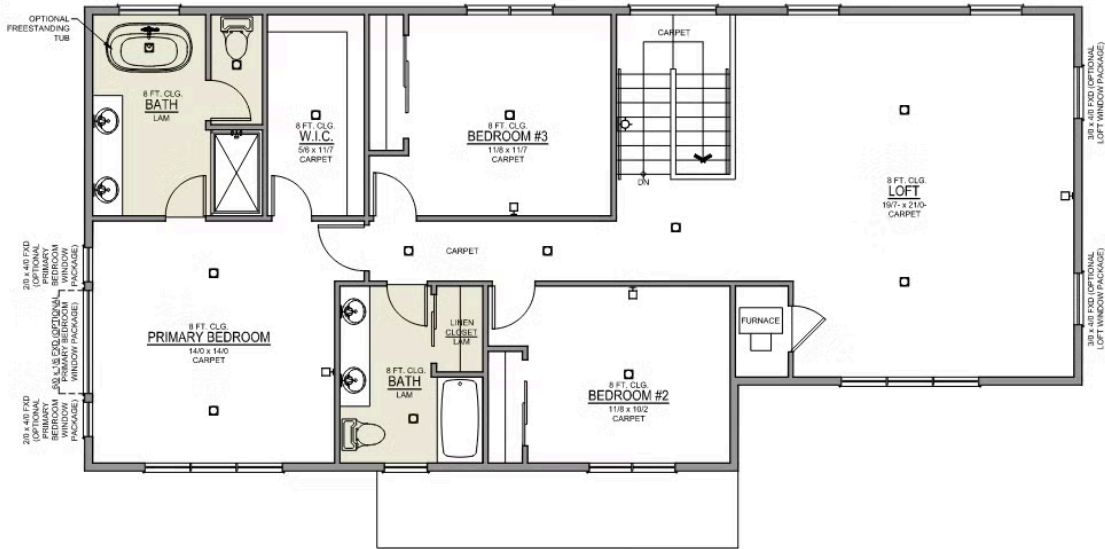
 2,427 Sq. Ft.

 2 Car Garage

## Douglas 2-Car

2,427 Sq. Ft.

4 Bedroom, 3 Bath



UPPER FLOOR



PRIMARY BATH LINEN CLOSET OPTION