

Premier Collection

JEFFERSON PREMIER

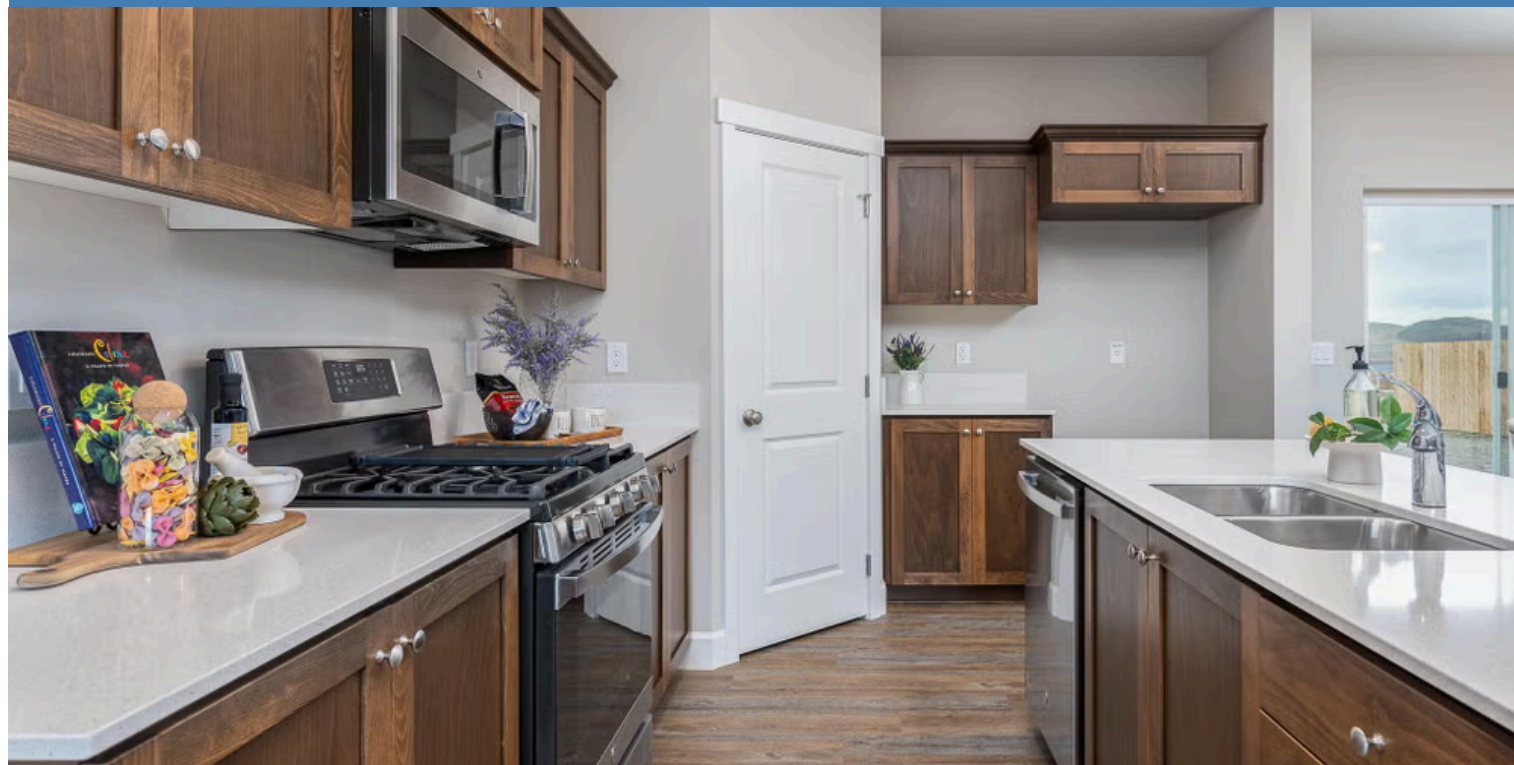
Available in 4 Communities

 4 Bedrooms

 2.5 Bathrooms

 1,761 Sq. Ft.

 2 Car Garage



T - Traditional



U - Craftsman



V - Farmhouse



- Guest Suite or Den on Main Level
- 9 Foot Ceilings on Main Level
- Kitchen Island with Sink
- Kitchen Corner Pantry

- Great Room with Gas Fireplace
- Primary Suite with Walk-in Closet
- Quartz Countertops throughout Home
- Stainless Steel Appliances



In a continual effort to improve our product, MonteVista Homes reserves the right to change product design, features, materials, floor plans, specifications, prices and terms without prior notice. Square footage stated or implied are approximate. Images may be representative of future home and show what's possible not what's included. Seller is a licensed real estate broker in the State of Oregon. CCB#203709



Premier Collection

JEFFERSON PREMIER

Available in 4 Communities

 4 Bedrooms

 2.5 Bathrooms

 1,761 Sq. Ft.

 2 Car Garage

Jefferson 2-Car
1,761 Sq. Ft.
4 Bedroom, 2.5 Bath



MAIN FLOOR

Premier Collection

JEFFERSON PREMIER

Available in 4 Communities

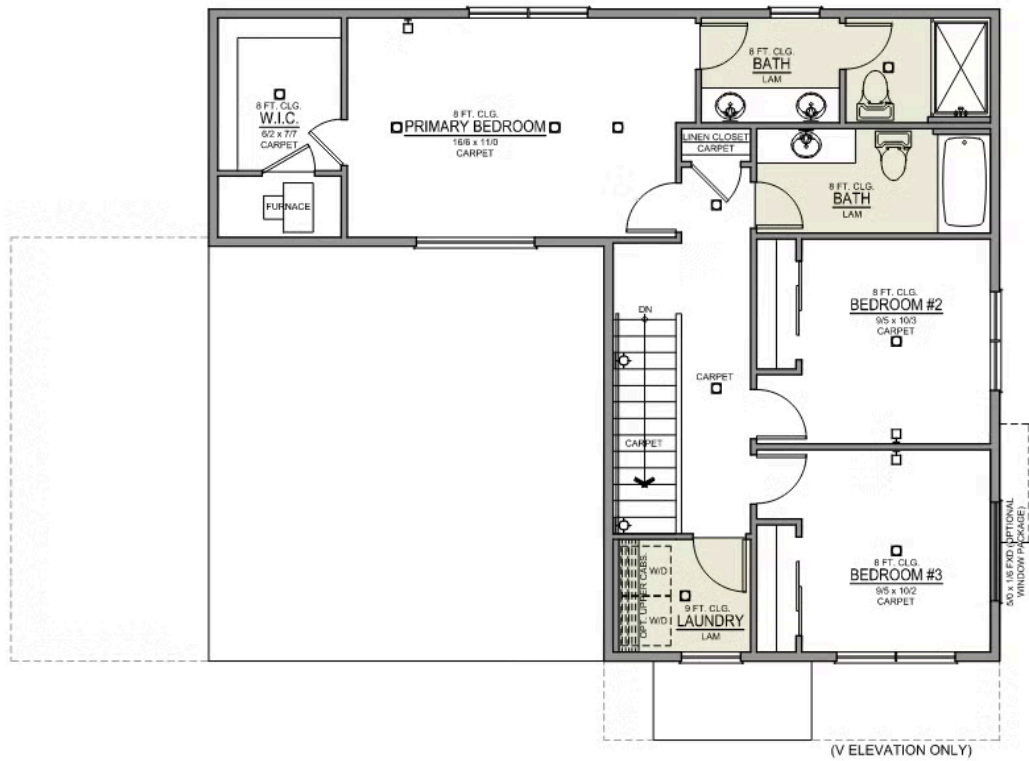
 4 Bedrooms

 2.5 Bathrooms

 1,761 Sq. Ft.

 2 Car Garage

Jefferson 2-Car
1,761 Sq. Ft.
4 Bedroom, 2.5 Bath



UPPER FLOOR