

ACAPELLA

BROKENTOP DISTINCT LOT 14

61628 SE Evie Dr. - \$10k Incentive Bend, OR
97702

 3 Bedrooms  2.5 Bathrooms  1,957+ Sq. Ft.  2 Car Garage  614,997

UNDER CONSTRUCTION



Y - Traditional



- \$10k Incentive if the home closes by the end of the year
- Kitchen Pantry
- Kitchen with Quartz Countertops
- Stainless Steel Appliances
- Upstairs Flexible Space Loft
- Primary Suite with Walk-in Closet
- Great Room with Gas Fireplace
- Covered Front Porch and Back Patio

 **MonteVista Homes &
PacWest Realty Group**

541-588-1049

In a continual effort to improve our product, MonteVista Homes reserves the right to change product design, features, materials, floor plans, specifications, prices and terms without prior notice. Square footage stated or implied are approximate. Images may be representative of future home and show what's possible not what's included. Seller is a licensed real estate broker in the State of Oregon. CCB#203709



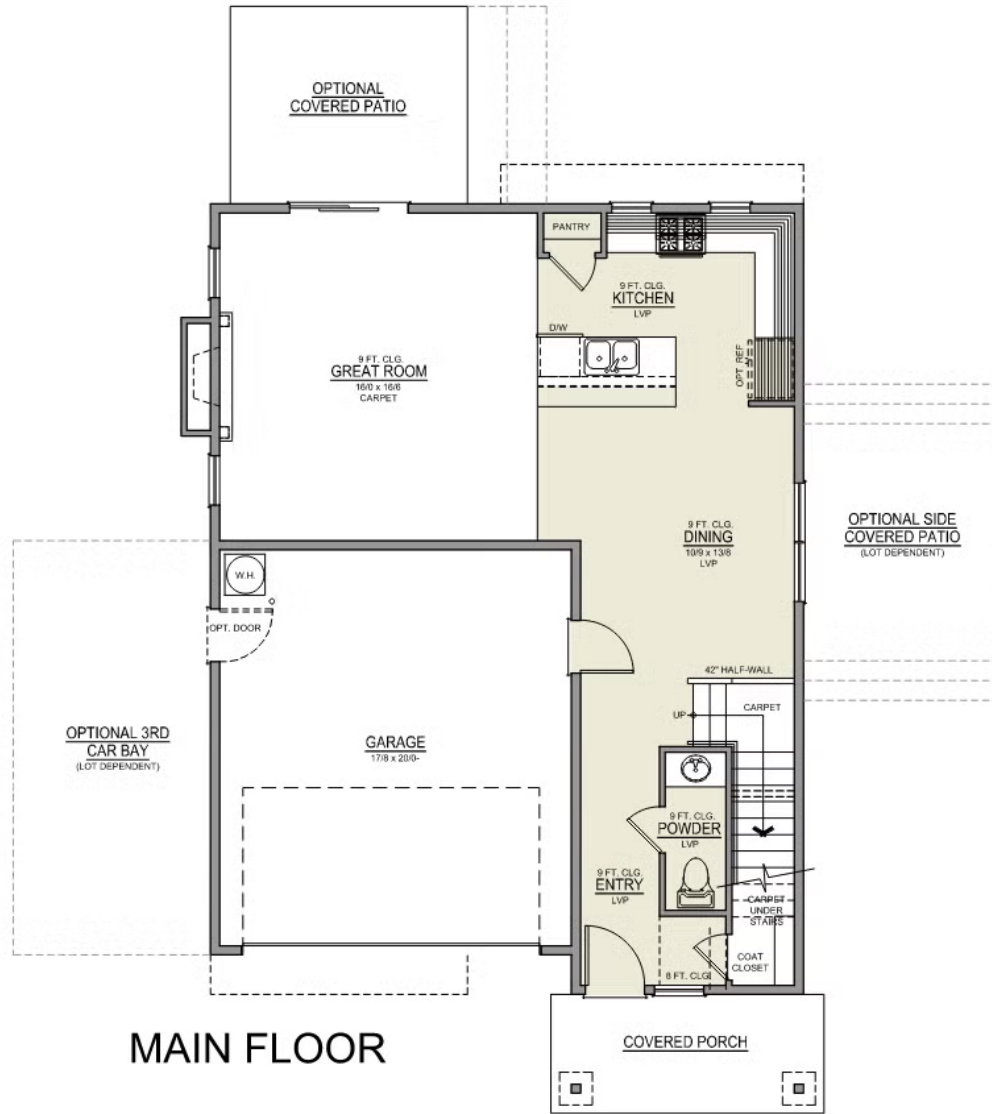
3 Bedrooms 2.5 Bathrooms 1,957+ Sq. Ft. 2 Car Garage 614,997

Main Floor | Brokentop

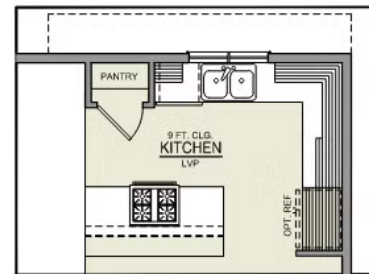
Brokentop 2-Car

1,957 Sq. Ft.

3 Bedroom, 2.5 Bath



MAIN FLOOR



ISLAND HOOD OPTION

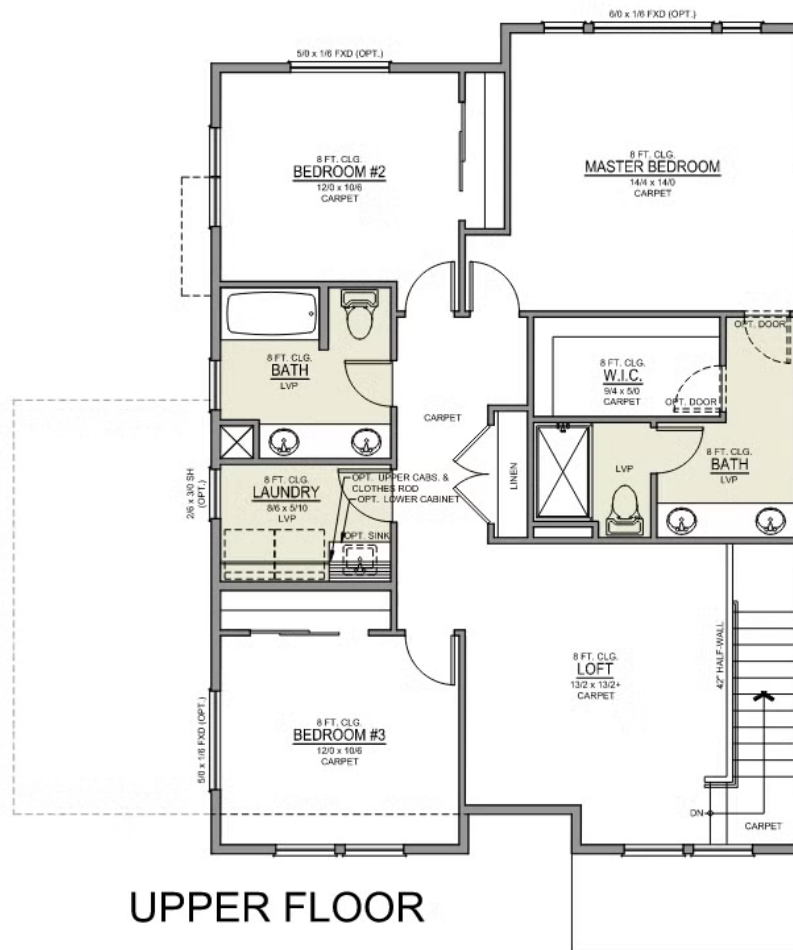
3 Bedrooms 2.5 Bathrooms 1,957+ Sq. Ft. 2 Car Garage 614,997

Upper Floor | Brokentop

Brokentop 2-Car

1,957 Sq. Ft.

3 Bedroom, 2.5 Bath



ACAPELLA

OPTIONS

BROKENTOP DISTINCT
LOT 14

61628 SE Evie Dr. - \$10k Incentive Bend, OR
97702

 3 Bedrooms  2.5 Bathrooms  1,957+ Sq. Ft.  2 Car Garage  614,997

- Interior Color Package - White Owl
- Exterior Color Package - Deschutes
- Light Fixtures Freemont
- Door Hardware: Cove
- Shower Enclosure Glass Color Choice
- Package: Tech Package Pre Wire - Includes Panel, 110 outlet, 1 Dual Wall Plate (Coax & Ethernet) in Great Room
- Kitchen: Island Range with Hood. 36" Cabinets. Sliding Window over the sink.
- Laundry Room Lower Cabs With Quartz Top and Backsplash.
- Full Height Backsplash
- Quartz Counters and Backsplash in Guest Bath
- Quartz Counters and Backsplash In Powder Bath
- Quartz Counters and Backsplash in Master Bath
- Tile Shower in Place of Fiberglass Shower: 5-ft Shower w/ Fiberglass Pan
- Covered Patio: 12x10
- LED: 4 Total + Dimmer in Great Room, Master, Bonus/Loft.
- Fencing: Dogear Cedar - 6' tall (50 ft Min. Order)
- Fencing: Walk Gate - Dogear Cedar - 6' tall, 4' wide.
- Fencing: Driveable Gate - Dogear Cedar - 6' tall, 12' wide.
- LVP Flooring: Great Room
- Garage Door Opener
- Garage Door Opener Wireless Keypad
- Air Conditioner - PreWire not previously selected
- Fireplace (Direct Vent) with Mantel and Stone Surround
- Insulated Garage - 2 Car: Walls, Ceiling and Garage Door.
- Backyard Landscaping: Up to a 60-ft wide lot
- Faucet: Moen Arbor SRS
- Tankless Hot Water Heater
- Windows: 5/0 x 1/6 Picture
- Windows: 6/0 x 1/6 Picture
- Price Improvement
- Price Improvement



541-588-1049

In a continual effort to improve our product, MonteVista Homes reserves the right to change product design, features, materials, floor plans, specifications, prices and terms without prior notice. Square footage stated or implied are approximate. Images may be representative of future home and show what's possible not what's included. Seller is a licensed real estate broker in the State of Oregon.
CCB#203709

