

ACAPELLA

JEFFERSON PREMIER LOT 28

21158 SE Golden Mkt Ln - \$10k Incentive Bend,
OR 97702

 4 Bedrooms  3.5 Bathrooms  1,761+ Sq. Ft.  2 Car Garage  599,997

UNDER CONSTRUCTION



U - Craftsman



- \$10k Incentive if the home closes by the end of the year
- Bedroom or Den on Main Level
- 9 Foot Ceilings on Main Level
- Kitchen Island with Sink
- Kitchen Pantry
- Open Great Room with Gas Fireplace
- Primary Suite with Walk-in Closet
- Quartz Countertops throughout
- Stainless Steel Appliances

 **MonteVista Homes &
PacWest Realty Group**

541-588-1049

In a continual effort to improve our product, MonteVista Homes reserves the right to change product design, features, materials, floor plans, specifications, prices and terms without prior notice. Square footage stated or implied are approximate. Images may be representative of future home and show what's possible not what's included. Seller is a licensed real estate broker in the State of Oregon. CCB#203709



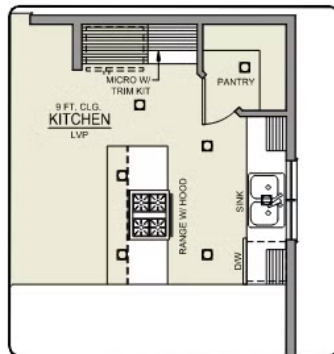
ACAPELLA

JEFFERSON PREMIER LOT 28

21158 SE Golden Mkt Ln - \$10k Incentive Bend,
OR 97702

🏠 4 Bedrooms 🚿 3.5 Bathrooms 🏠 1,761+ Sq. Ft. 🚗 2 Car Garage 💰 599,997

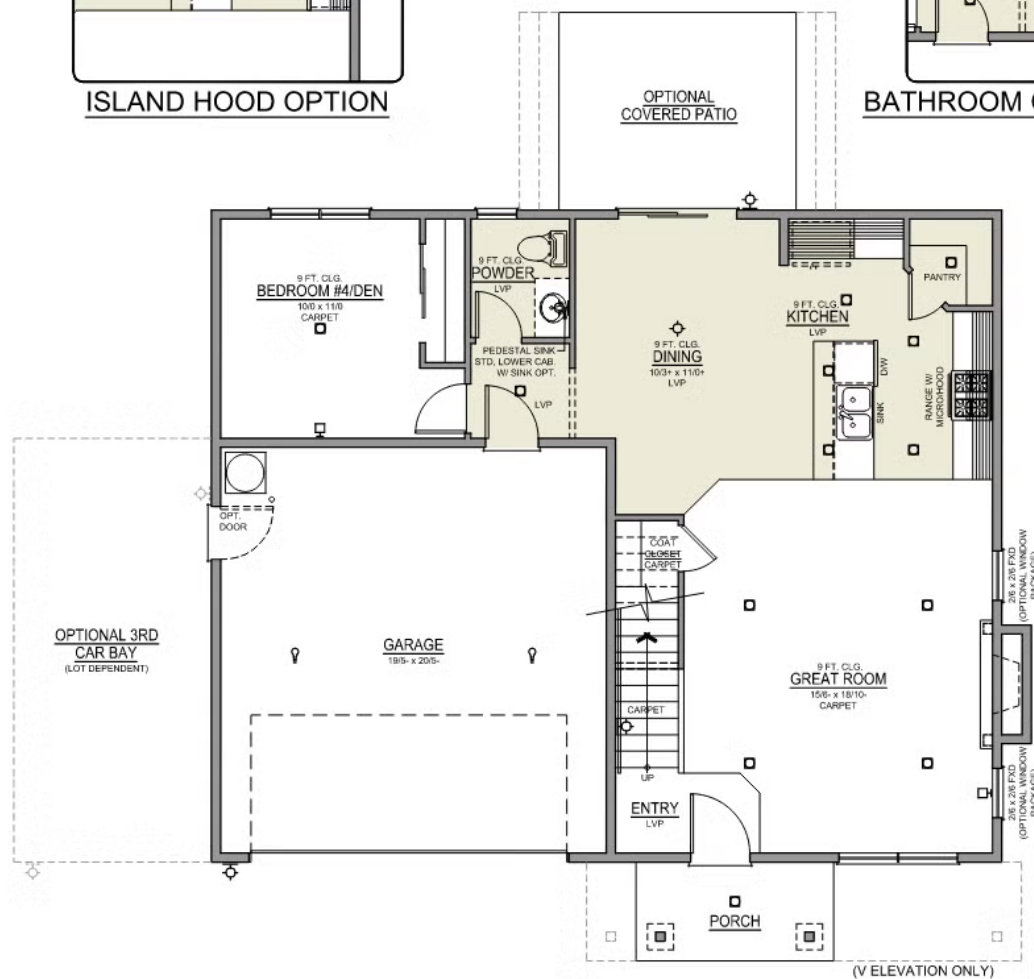
Jefferson 2-Car
1,761 Sq. Ft.
4 Bedroom, 2.5 Bath



ISLAND HOOD OPTION



BATHROOM OPTION



MAIN FLOOR

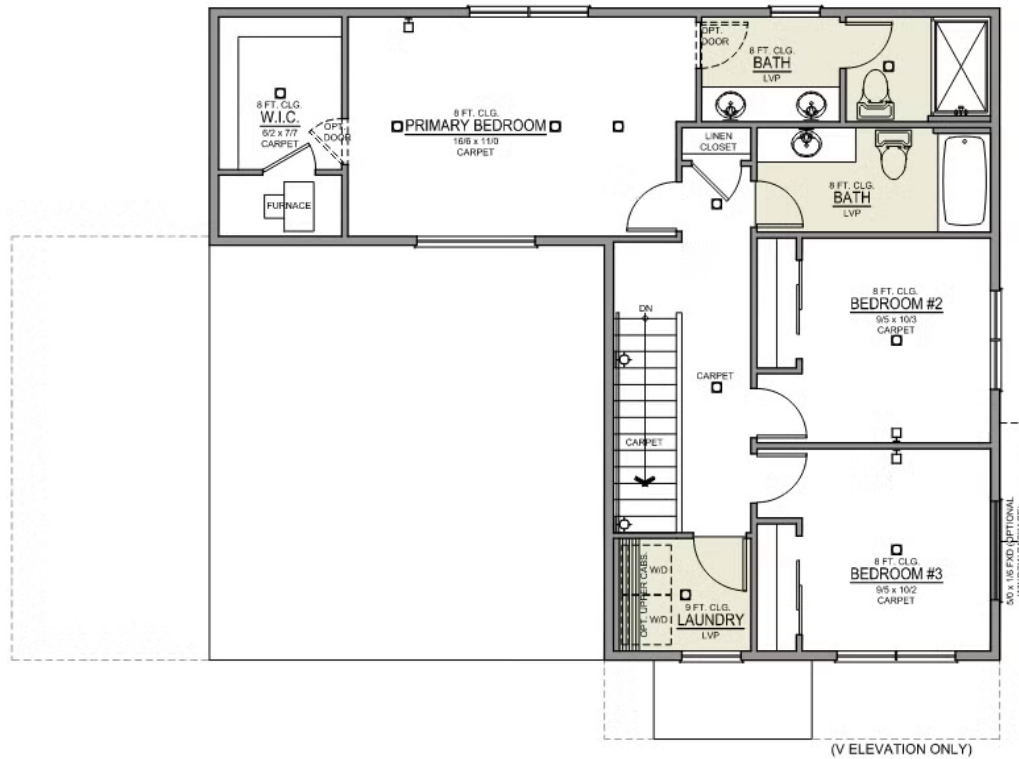
ACAPELLA

JEFFERSON PREMIER LOT 28

21158 SE Golden Mkt Ln - \$10k Incentive Bend,
OR 97702

🛏️ 4 Bedrooms 🚿 3.5 Bathrooms 🏠 1,761+ Sq. Ft. 🚗 2 Car Garage 💰 599,997

Jefferson 2-Car
1,761 Sq. Ft.
4 Bedroom, 2.5 Bath



UPPER FLOOR

ACAPELLA

OPTIONS

JEFFERSON PREMIER
LOT 28

21158 SE Golden Mkt Ln - \$10k Incentive Bend,
OR 97702

 4 Bedrooms  3.5 Bathrooms  1,761+ Sq. Ft.  2 Car Garage  599,997

- Interior Color Package - Fossil - Painted Cabinets (All cabinets in house MUST be selected as "PAINTED")
- Exterior Color Package - Mist
- Light Fixtures Freemont
- Door Hardware: Cove
- Shower Enclosure Glass Color Choice
- Package: Corner Lot - Includes Window trim on Corner Side, Flatwork and Corner Landscaping
- Package: Tech Package Pre Wire - Includes Panel, 110 outlet, 1 Dual Wall Plate (Coax & Ethernet) in Great Room
- Package: Optional Windows
- Kitchen: Island Range with Hood. 36" Cabinets. Painted Kitchen & Bathroom Cabinets. Sliding Window over the sink.
- Laundry Room Upper Cabinets - PAINTED - 30" cabs
- Full Height Backsplash
- Quartz Counters and Backsplash in Guest Bath
- Quartz Counters and Backsplash in Master Bath
- Tile Shower in Place of Fiberglass Shower: 4-ft Shower w/ Fiberglass Pan
- Jefferson - Add 5' Shower in Downstair's Bathroom
- Covered Patio - Rear - 14x10
- LED: 4 Total + Dimmer in Great Room, Master, Bonus/Loft.
- Fencing: 6-ft Dogear Cedar - 50-ft Min Order
- Fencing: 4-ft Walk Gate - Dogear Cedar
- Package: Optional 6/8 Interior Doors
- LVP Flooring: Great Room
- Garage Door Opener
- Garage Door Opener Wireless Keypad
- Air Conditioner - PreWire not previously selected
- Insulated Garage - 2 Car: Walls, Ceiling and Garage Door.
- Backyard Landscaping: Up to a 60-ft wide lot
- Stone on all Front Column(s)
- Stone Garage Wing Wall - 2 Car
- Faucet: Moen Arbor SRS
- Tankless Hot Water Heater
- Price Improvement
- Price Improvement
- Add 2nd gate



541-588-1049

In a continual effort to improve our product, MonteVista Homes reserves the right to change product design, features, materials, floor plans, specifications, prices and terms without prior notice. Square footage stated or implied are approximate. Images may be representative of future home and show what's possible not what's included. Seller is a licensed real estate broker in the State of Oregon.
CCB#203709

