

Acapella

Metolius Distinct LOT 13

61624 SE Evie Dr. Bend, OR 97702

🏠 4 Bedrooms

🚿 3 Bathrooms

📏 2,029 Sq. Ft.

🚗 2 Car Garage

🏷️ 619,997

MOVE-IN READY



Z - FARMHOUSE



- \$10k Incentive (See agent for details)
- 9 Foot Ceilings with 8 Foot Doors
- Downstairs Suite
- Upstairs Bonus Room / Loft
- Kitchen Island Range Configuration
- Farmhouse Style Sink in Kitchen

- Quartz Kitchen Countertops with Full-Height Backsplash
- Oversized Windows
- Tile Shower in Primary Bathroom
- Free-Standing Soaking Tub
- Smart Home Ready

MonteVista HOMES

541-588-1049

In a continual effort to improve our product, MonteVista Homes reserves the right to change product design, features, materials, floor plans, specifications, prices and terms without prior notice. Square footage stated or implied are approximate. Images may be representative of future home and show what's possible not what's included. Seller is a licensed real estate broker in the State of Oregon. CCB#203709



Acapella

Metolius Distinct LOT 13

61624 SE Evie Dr. Bend, OR 97702

4 Bedrooms 3 Bathrooms 2,029 Sq. Ft. 2 Car Garage 619,997

Metolius 2-Car
2,095 Sq. Ft.
4 Bedroom, 3 Bath



🛏 4 Bedrooms

🚿 3 Bathrooms

🏠 2,029 Sq. Ft.

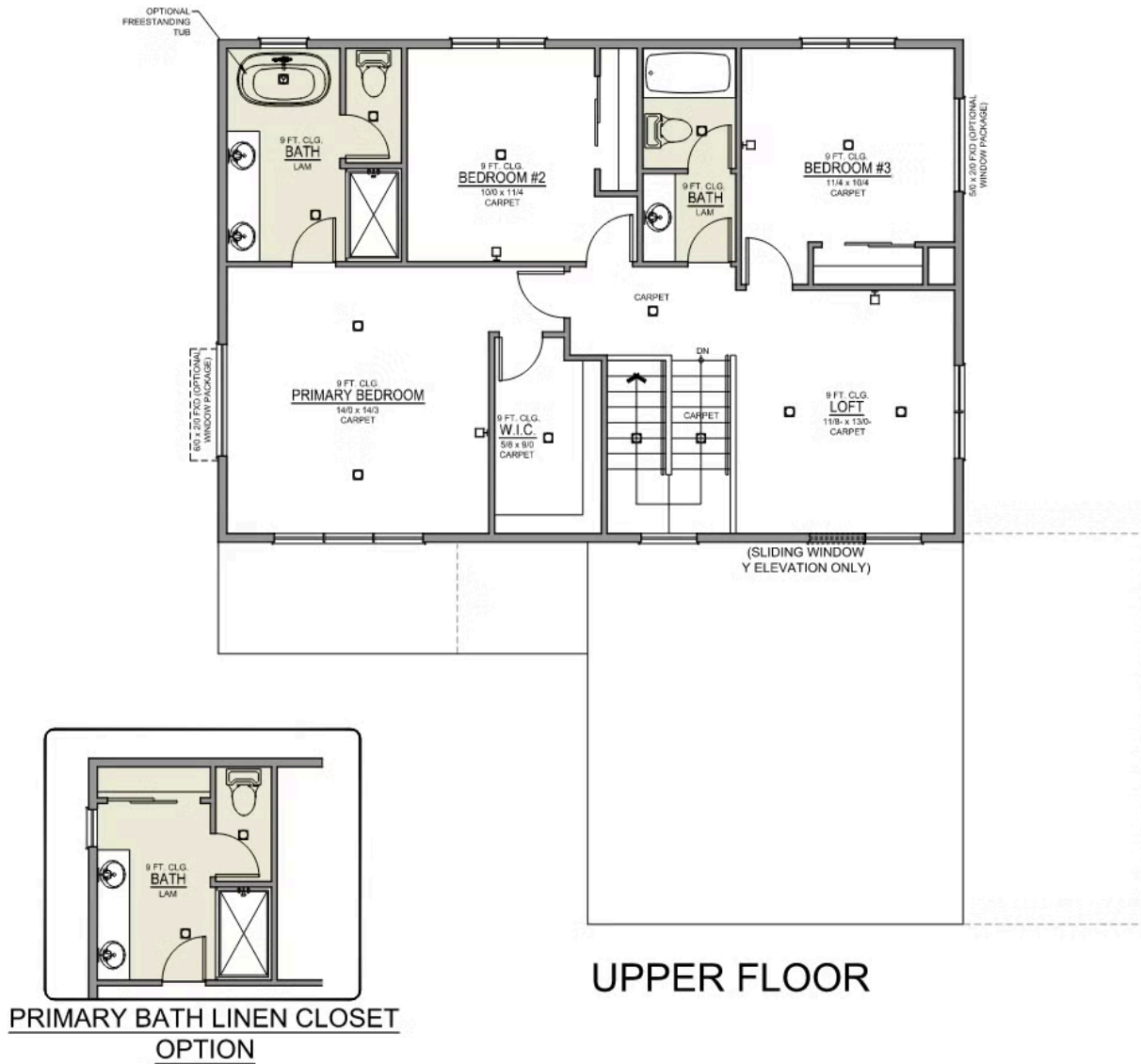
🚗 2 Car Garage

🏠 619,997

Metolius 2-Car

2,095 Sq. Ft.

4 Bedroom, 3 Bath



Acapella

OPTIONS

Metolius Distinct
LOT 13

61624 SE Evie Dr. Bend, OR 97702

 4 Bedrooms

 3 Bathrooms

 2,029 Sq. Ft.

 2 Car Garage

 619,997

- Interior Color Package - Linen - WHITE IS STANDARD FOR INTERIOR WALLS, TO SUBSTITUTE GRAY NOTE IN COMMENTS.
- Exterior Color Package - Mist
- Light Fixtures Freemont
- Door Hardware: Cove
- Shower Enclosure Glass Color Choice
- Package: Tech Package Pre Wire - Includes Panel, 110 outlet, 1 Dual Wall Plate (Coax & Ethernet) in Great Room
- Kitchen: Island Range with Hood. 36" Cabinets. Painted Kitchen & Bathroom Cabinets. Sliding Window over the sink.
- Laundry Room Lower Cabs With Quartz Top and Backsplash. - PAINTED
- Full Height Backsplash
- Quartz Counters and Backsplash in Guest Bath
- Quartz Counters and Backsplash In Powder Bath
- Quartz Counters and Backsplash in Master Bath
- Tile Shower in Place of Fiberglass Shower: 5-ft Shower w/ Fiberglass Pan
- Covered Patio: 14x10
- LED: 4 Total + Dimmer in Great Room, Master, Bonus/Loft.
- Fencing: Dogear Cedar - 6' tall (50 ft Min. Order)
- Fencing: Walk Gate - Dogear Cedar - 6' tall, 4' wide.
- LVP Flooring: Great Room
- Garage Door Opener
- Garage Door Opener Wireless Keypad
- Air Conditioner - PreWire not previously selected
- Fireplace (Direct Vent) with Mantel and Stone Surround
- Insulated Garage - 2 Car: Walls, Ceiling and Garage Door.
- Backyard Landscaping: Up to a 60-ft wide lot
- Farm Sink: Stainless Steel Single Bowl
- Faucet: Moen Arbor SRS
- Windows : 1/6 x 3/0 Picture - Obscure
- Windows: 2/0 x 4/0 Picture
- Windows: 6/0 x 1/6 Picture

MonteVista
HOMES

541-588-1049

In a continual effort to improve our product, MonteVista Homes reserves the right to change product design, features, materials, floor plans, specifications, prices and terms without prior notice. Square footage stated or implied are approximate. Images may be representative of future home and show what's possible not what's included. Seller is a licensed real estate broker in the State of Oregon. CCB#203709

