

Artisan's Village

Charlotte Distinct
LOT 15

2853 NE Wells Acres Rd. Bend, OR 97701

4 Bedrooms 2 Bathrooms 1,701 Sq. Ft. 2 Car Garage 634,900

MOVE-IN READY



Z - FARMHOUSE



- 9 Foot Ceilings with 8 Foot Doors
- Vaulted Ceilings in the Great Room
- Quartz Kitchen Countertops with Full-Height Backsplash
- Oversized Windows

- Tile Shower in Primary Bathroom
- Farmhouse Style Sink in Kitchen
- Laundry Room
- Smart Home Ready

MonteVista
HOMES

541-699-1180

In a continual effort to improve our product, MonteVista Homes reserves the right to change product design, features, materials, floor plans, specifications, prices and terms without prior notice. Square footage stated or implied are approximate. Images may be representative of future home and show what's possible not what's included. Seller is a licensed real estate broker in the State of Oregon. CCB#203709

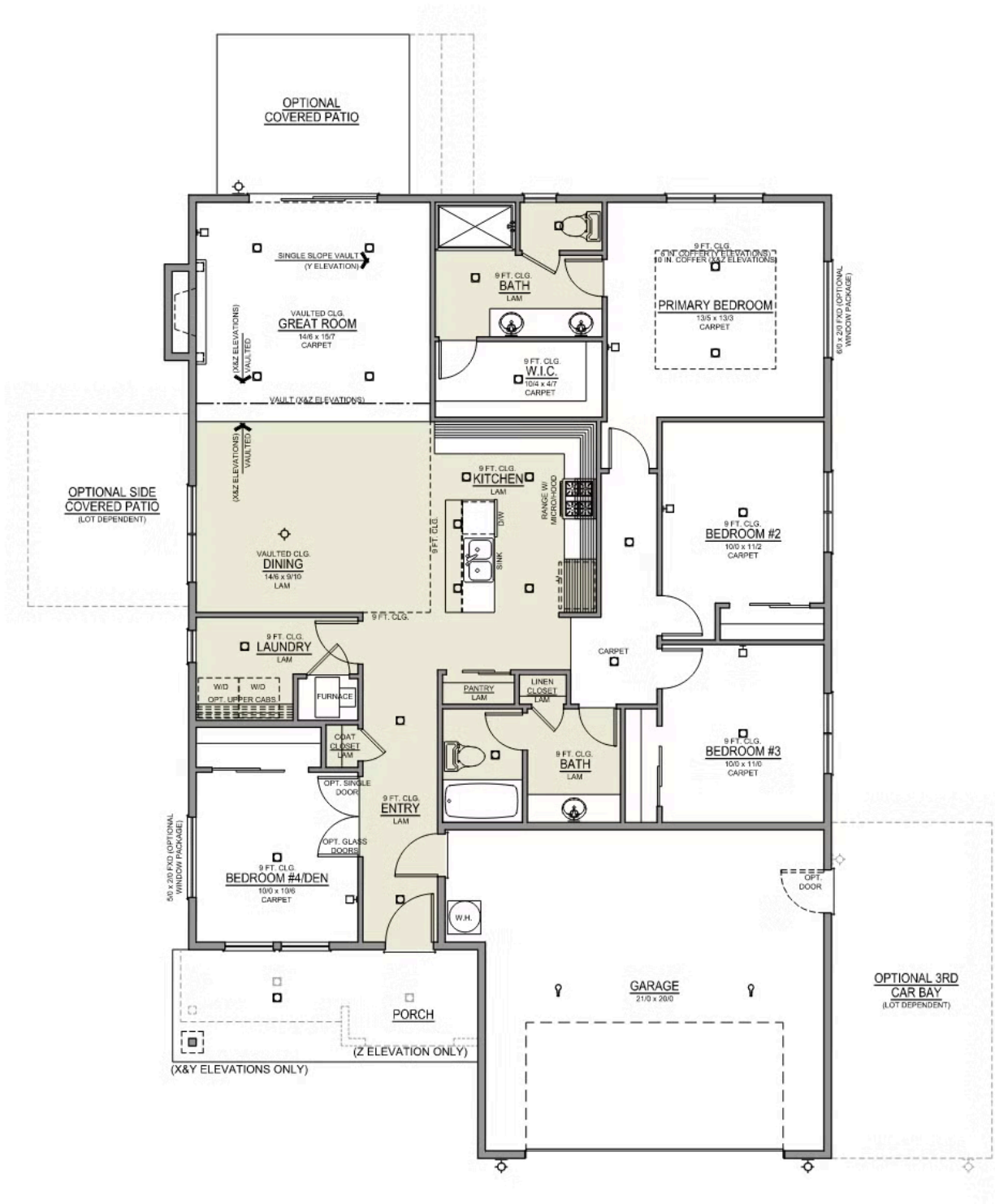


Charlotte Distinct LOT 15

2853 NE Wells Acres Rd. Bend, OR 97701

 4 Bedrooms
  2 Bathrooms
  1,701 Sq. Ft.
  2 Car Garage
  634,900

Charlotte 2-Car
1,701 Sq. Ft.
4 Bedroom, 2 Bath



Artisan's Village

OPTIONS

Charlotte Distinct
LOT 15

2853 NE Wells Acres Rd. Bend, OR 97701

 4 Bedrooms  2 Bathrooms  1,701 Sq. Ft.  2 Car Garage  634,900

- Interior Color Package: "Mountain Vogue". Painted Cabinets (All cabinets in house MUST be selected as "PAINTED")
- Exterior Color Package: Alpine Trail
- Light Fixtures Freemont
- Door Hardware: Cove
- Shower Enclosure Glass Color Choice
- Package: Tech Package Pre Wire - Includes Panel, 110 outlet, 1 Dual Wall Plate (Coax & Ethernet) in Great Room
- Package: Optional Windows
- Add Soft Close Doors and Drawers
- Laundry Room Upper Cabinets: PAINTED- 36"
- Kitchen: 36" Cabinets. PAINTED Kitchen & Bathroom Cabinets.
- Full Height Backsplash
- Quartz Counters and Backsplash in Kitchen
- Quartz Counters and Backsplash in Guest Bath
- Quartz Counters and Backsplash in Master Bath
- Tile Shower in Place of Fiberglass Shower: 5-ft Shower w/ Fiberglass Pan
- Covered Patio - Rear - 14x10
- Pendant Lights over Kitchen Island - In place of recessed LED
- Recessed LED: Add 2 for 4 total+ Dimmer in Primary Bedroom.
- Under Cabinet Lighting
- Fencing: Shadow Box Cedar - 6' tall (50 ft Min. Order)
- Fencing: Walk Gate - Shadow Box - 6' tall, 4'wide.
- Double Doors - Interior 6-8 doors - Upgrade to Full Light Glass
- Package: Optional 8/0 Interior Doors - XYZ Only
- LVP Flooring: Great Room
- Finished Garages - 2 Car: Walls Textured (Orange Peel), Primed & Painted.
- Garage Door Opener
- Garage Door Opener Wireless Keypad
- Air Conditioner - PreWire not previously selected
- Fireplace (Direct Vent) with Mantel and Stone Surround
- Insulated Garage - 2 Car: Walls, Ceiling and Garage Door.
- Exterior Landscape: Backyard Landscaping. Up to a 60-ft wide lot
- Farm Sink: Stainless Steel Single Bowl
- Faucet: Moen Arbor SRS

MonteVista
HOMES

541-699-1180

In a continual effort to improve our product, MonteVista Homes reserves the right to change product design, features, materials, floor plans, specifications, prices and terms without prior notice. Square footage stated or implied are approximate. Images may be representative of future home and show what's possible not what's included. Seller is a licensed real estate broker in the State of Oregon. CCB#203709

