

# Cimmaron Terrace

Charlotte Premier  
LOT 12

1593 NE 8th Pl. Hermiston, OR 97838

4 Bedrooms

2 Bathrooms

1,701 Sq. Ft.

2 Car Garage

368,900

UNDER CONSTRUCTION



T - TRADITIONAL 2 CAR



- Kitchen Island with Sink
- Quartz Countertops throughout Home
- Great Room with Gas Fireplace

- Kitchen Pantry
- Stainless Steel Appliances
- Dedicated Laundry Room

MonteVista  
HOMES

541-403-5150

In a continual effort to improve our product, MonteVista Homes reserves the right to change product design, features, materials, floor plans, specifications, prices and terms without prior notice. Square footage stated or implied are approximate. Images may be representative of future home and show what's possible not what's included. Seller is a licensed real estate broker in the State of Oregon. CCB#203709



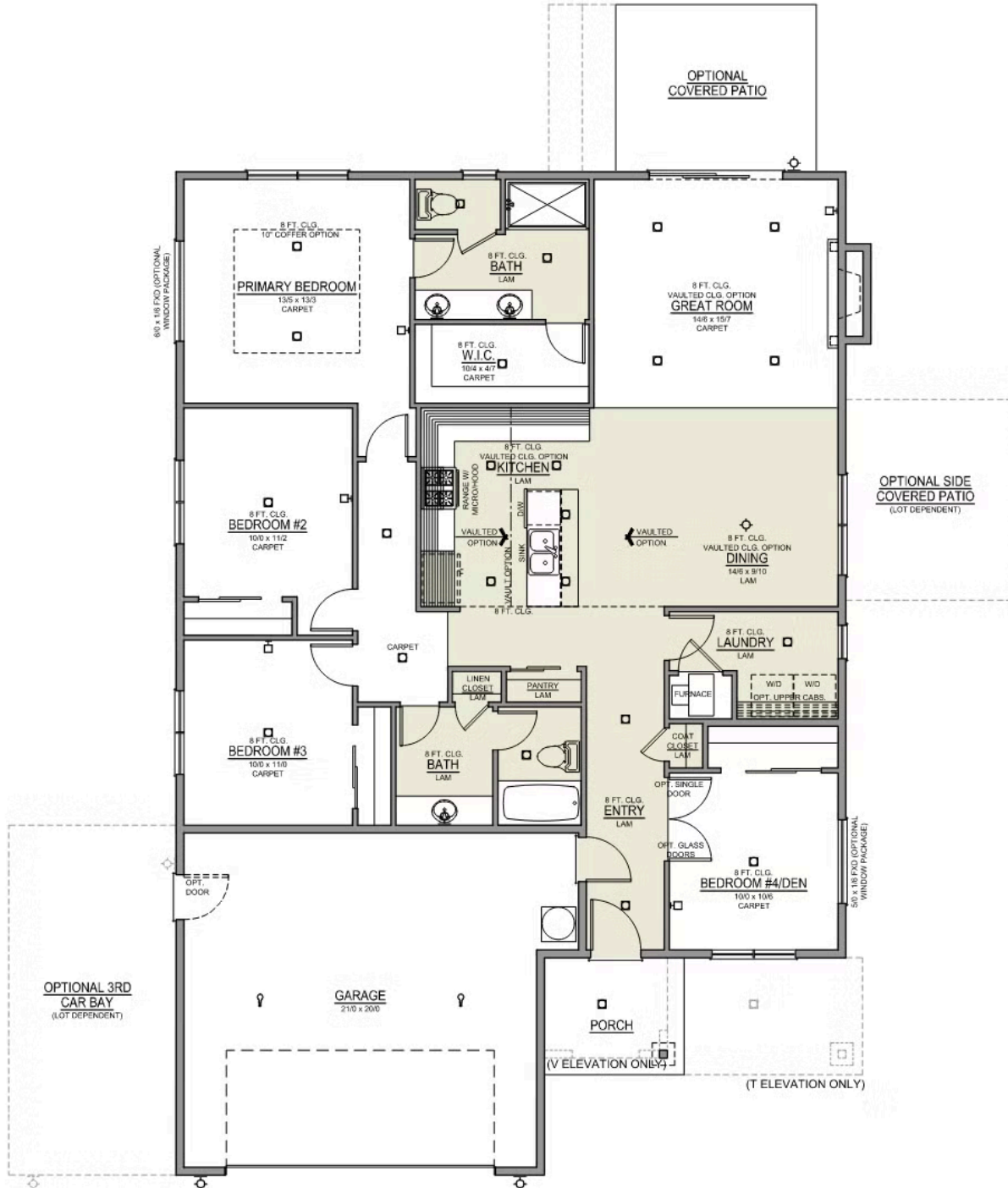
# Cimmaron Terrace

Charlotte Premier  
LOT 12

1593 NE 8th Pl. Hermiston, OR 97838

4 Bedrooms 2 Bathrooms 1,701 Sq. Ft. 2 Car Garage 368,900

**Charlotte 2-Car**  
1,701 Sq. Ft.  
4 Bedroom, 2 Bath



# Cimmaron Terrace

## OPTIONS

Charlotte Premier  
LOT 12

1593 NE 8th Pl. Hermiston, OR 97838

 4 Bedrooms

 2 Bathrooms

 1,701 Sq. Ft.

 2 Car Garage

 368,900

- Interior Color Package: "Granite Shoreline". Painted Cabinets (All cabinets in house MUST be selected as "PAINTED")
- Exterior Color Package: Deschutes Frost
- Light Fixtures: Acadia
- Doors: Hardware Standard. "Cove" knobs / "Amador" front door handle.
- Bathroom: Shower Enclosure Glass Color Choice
- Electrical Package: Tech Package Pre Wire - Includes Panel, 110 outlet, 1 Dual Wall Plate (Coax & Ethernet) in Great Room
- Windows Package: Optional Windows
- Ceilings: Vault in Great Room and Coffered Ceiling in Primary Bedroom
- Kitchen: 30" Cabinets. PAINTED Kitchen & Bathroom Cabinets.
- Cabinets: Knobs and Pulls
- Counters: Quartz Counters and Backsplash in Kitchen
- Counters: Quartz Counters and Backsplash in Guest Bath
- Counters: Quartz Counters and Backsplash in Master Bath
- Exterior Covered Patio: Rear - 12x10
- Kitchen: Pendant Lights over Kitchen Island - In place of recessed LED
- Electrical: Recessed LEDs. Add 2 for 4 total+ Dimmer in Primary Bedroom.
- Doors Package: Add Optional 6/8 Interior Doors (Premier Series Only)
- Flooring: Great Room - Wood Laminate (Casita Court)
- Flooring: Hallway Down - Wood Laminate (Casita Court)
- Garage: Garage Door Opener
- Garage: Garage Door Opener Wireless Keypad
- HVAC: Air Conditioner - PreWire not previously selected
- Fireplace: (Direct Vent) with Mantel and Stone Surround
- Exterior: Stone on all Front Column(s)
- Kitchen: Farm Sink - Stainless Steel Single Bowl

**MonteVista**  
HOMES

**541-403-5150**

*In a continual effort to improve our product, MonteVista Homes reserves the right to change product design, features, materials, floor plans, specifications, prices and terms without prior notice. Square footage stated or implied are approximate. Images may be representative of future home and show what's possible not what's included. Seller is a licensed real estate broker in the State of Oregon. CCB#203709*

