

# CIMMARON TERRACE

CHARLOTTE PREMIER  
LOT 10

1607 NE 8th Pl. Hermiston, OR 97838

🏠 4 Bedrooms

🚿 2 Bathrooms

🏠 1,701 Sq. Ft.

🚗 2 Car Garage

💰 359,997

UNDER CONSTRUCTION



V - Farmhouse 2 Car



- Kitchen Island with Sink
- Quartz Countertops throughout Home
- Open Great Room with Gas Fireplace

- Kitchen Pantry
- Stainless Steel Appliances
- Dedicated Laundry Room

 **MonteVista Homes &  
PacWest Realty Group**

**541-403-5150**

*In a continual effort to improve our product, MonteVista Homes reserves the right to change product design, features, materials, floor plans, specifications, prices and terms without prior notice. Square footage stated or implied are approximate. Images may be representative of future home and show what's possible not what's included. Seller is a licensed real estate broker in the State of Oregon. CCB#203709*



# CIMMARON TERRACE

# CHARLOTTE PREMIER LOT 10

1607 NE 8th Pl. Hermiston, OR 97838

4 Bedrooms

2 Bathrooms

1,701 Sq. Ft.

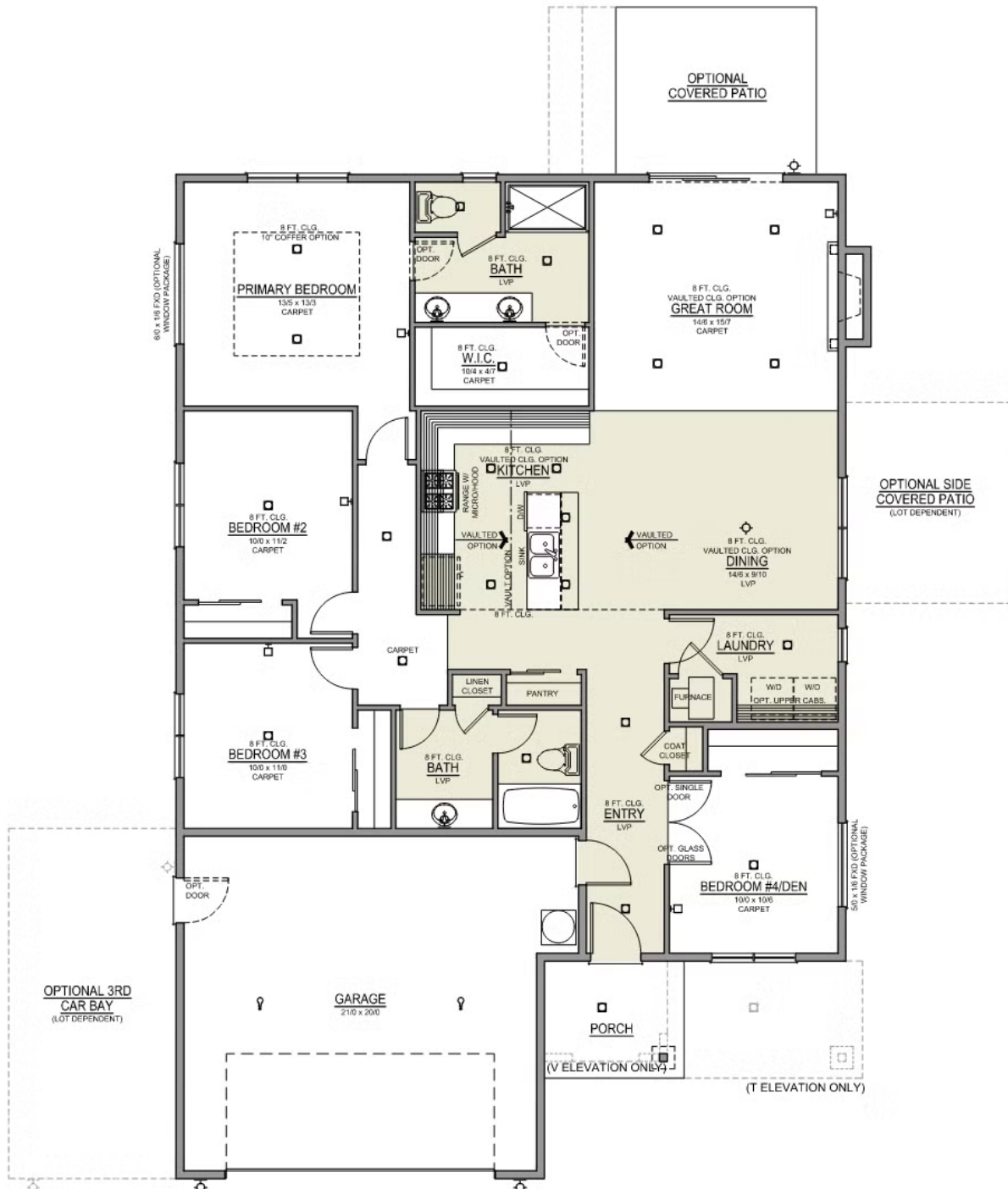
2 Car Garage

359,997

## Charlotte 2-Car

1,701 Sq. Ft.

4 Bedroom, 2 Bath



# CIMMARON TERRACE

## OPTIONS

CHARLOTTE PREMIER

LOT 10

1607 NE 8th Pl. Hermiston, OR 97838

 4 Bedrooms

 2 Bathrooms

 1,701 Sq. Ft.

 2 Car Garage

 359,997

- Interior Color Package: "Urban Oasis"
- Exterior Color Package: Alpine Trail
- Light Fixtures: Acadia
- Doors: Hardware Standard. "Cove" knobs / "Amador" front door handle.
- Bathroom: Upgrade finishes NICKEL - All bathrooms. Soaker Tub NOT included. (Plumbing Fixtures, bath accessories and shower door hardware)
- Bathroom: Shower Enclosure Glass Color Choice
- Electrical Package: Tech Package Pre Wire - Includes Panel, 110 outlet, 1 Dual Wall Plate (Coax & Ethernet) in Great Room
- Windows Package: Optional Windows
- Ceilings: Vault in Great Room and Coffered Ceiling in Primary Bedroom
- Cabinets: Knobs and Pulls
- Kitchen: Full Height Backsplash
- Counters: Quartz Counters and Backsplash in Kitchen
- Counters: Quartz Counters and Backsplash in Guest Bath
- Counters: Quartz Counters and Backsplash in Master Bath
- Kitchen: Pendant Lights over Kitchen Island - In place of recessed LED
- Electrical: Recessed LEDs. Add 2 for 4 total+ Dimmer in Primary Bedroom.
- Kitchen: Under Cabinet Lighting
- Doors: Interior Double Doors to Single Door. 6-8 Door (Premier Series Only).
- Doors Package: Add Optional 6/8 Interior Doors (Premier Series Only)
- Flooring: Great Room - Wood Laminate (Casita Court)
- Garage: Garage Door Opener
- Garage: Garage Door Opener Wireless Keypad
- HVAC: Air Conditioner - PreWire not previously selected
- Fireplace: (Direct Vent) with Mantel and Stone Surround
- Kitchen: Upgrade Faucet to Moen Arbor SRS



**541-403-5150**

*In a continual effort to improve our product, MonteVista Homes reserves the right to change product design, features, materials, floor plans, specifications, prices and terms without prior notice. Square footage stated or implied are approximate. Images may be representative of future home and show what's possible not what's included. Seller is a licensed real estate broker in the State of Oregon.*

CCB#203709

