

Premier Collection

Douglas Premier

Cimmaron Terrace

 4 Bedrooms

 3 Bathrooms

 2,427 Sq. Ft.

 2 Car Garage



U - CRAFTSMAN



V - FARMHOUSE



- 9 Foot Ceilings throughout Main Level
- Great Room with Fireplace
- Kitchen Island with Sink
- Kitchen Pantry

- Upstairs Bonus Room / Loft
- Main Level Guest Suite / Den
- Quartz Countertops throughout Home
- Stainless Steel Appliances

MonteVista
HOMES

541-403-5150

In a continual effort to improve our product, MonteVista Homes reserves the right to change product design, features, materials, floor plans, specifications, prices and terms without prior notice. Square footage stated or implied are approximate. Images may be representative of future home and show what's possible not what's included. Seller is a licensed real estate broker in the State of Oregon. CCB#203709



Premier Collection

Douglas Premier

Cimmaron Terrace

4 Bedrooms

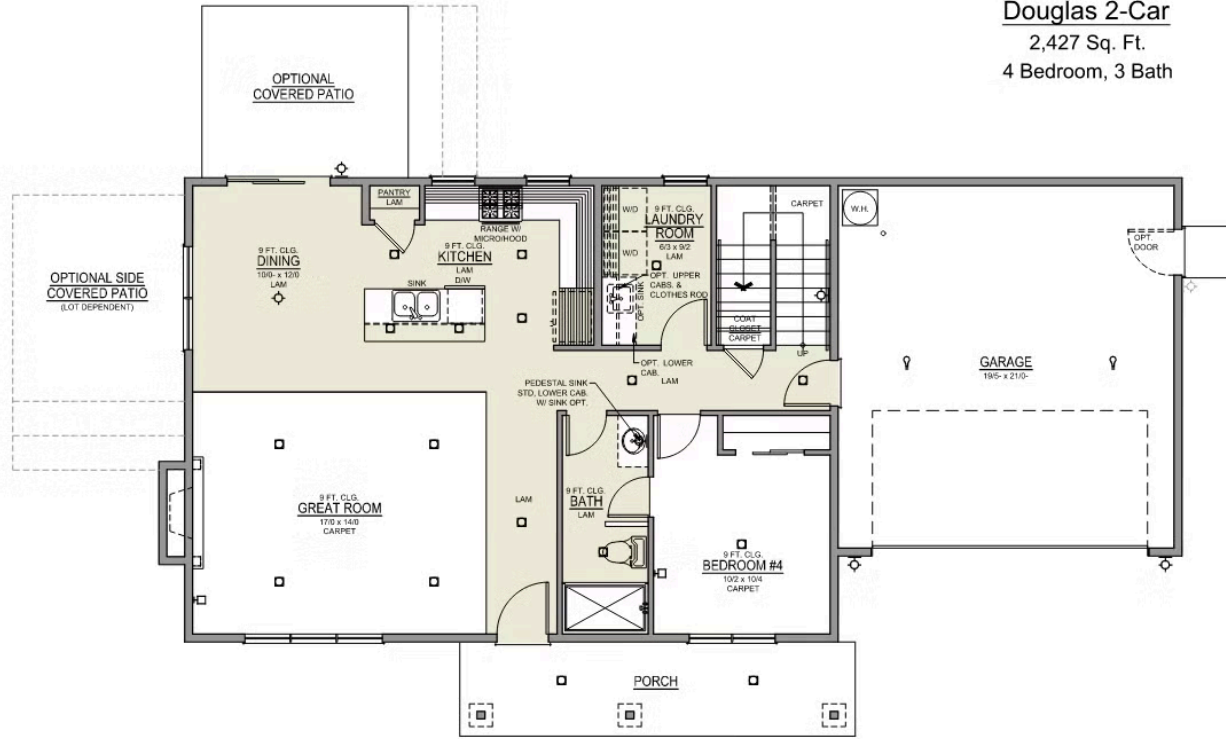
3 Bathrooms

2,427 Sq. Ft.

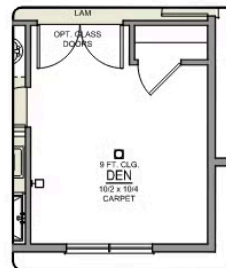
2 Car Garage

Douglas 2-Car

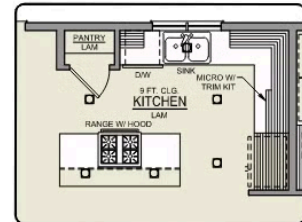
2,427 Sq. Ft.
4 Bedroom, 3 Bath



MAIN FLOOR



DEN OPTION



ISLAND HOOD OPTION

Premier Collection

Douglas Premier

Cimmaron Terrace

4 Bedrooms

3 Bathrooms

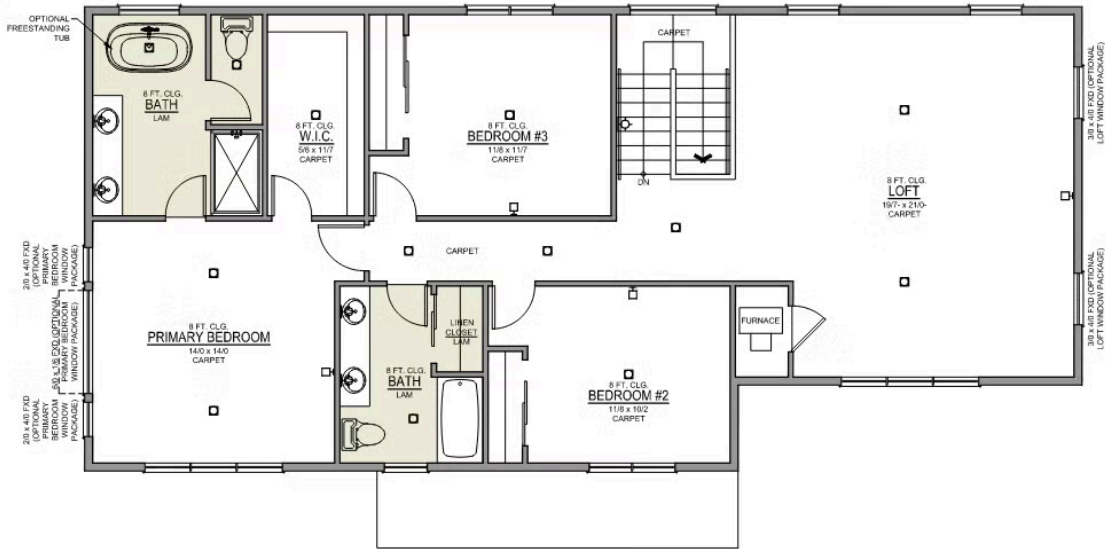
2,427 Sq. Ft.

2 Car Garage

Douglas 2-Car

2,427 Sq. Ft.

4 Bedroom, 3 Bath



UPPER FLOOR



PRIMARY BATH LINEN CLOSET OPTION