

CIMMARON TERRACE

HOPE PREMIER
LOT 27

1642 NE 8th Pl. - \$10k Incentive Hermiston, OR
97838

 4 Bedrooms  2 Bathrooms  1,906 Sq. Ft.  3 Car Garage  399,900

UNDER CONSTRUCTION



V - Farmhouse



- \$10k Incentive if the home closes by the end of the year
- Kitchen Island with Sink
- Kitchen Pantry
- Open Great Room with Gas Fireplace
- Quartz Countertops throughout Home
- Stainless Steel Appliances

 **MonteVista Homes &
PacWest Realty Group**

541-403-5150

In a continual effort to improve our product, MonteVista Homes reserves the right to change product design, features, materials, floor plans, specifications, prices and terms without prior notice. Square footage stated or implied are approximate. Images may be representative of future home and show what's possible not what's included. Seller is a licensed real estate broker in the State of Oregon. CCB#203709



CIMMARON TERRACE

HOPE PREMIER
LOT 27

1642 NE 8th Pl. - \$10k Incentive Hermiston, OR

97838

🏠 4 Bedrooms

🚿 2 Bathrooms

🏠 1,906 Sq. Ft.

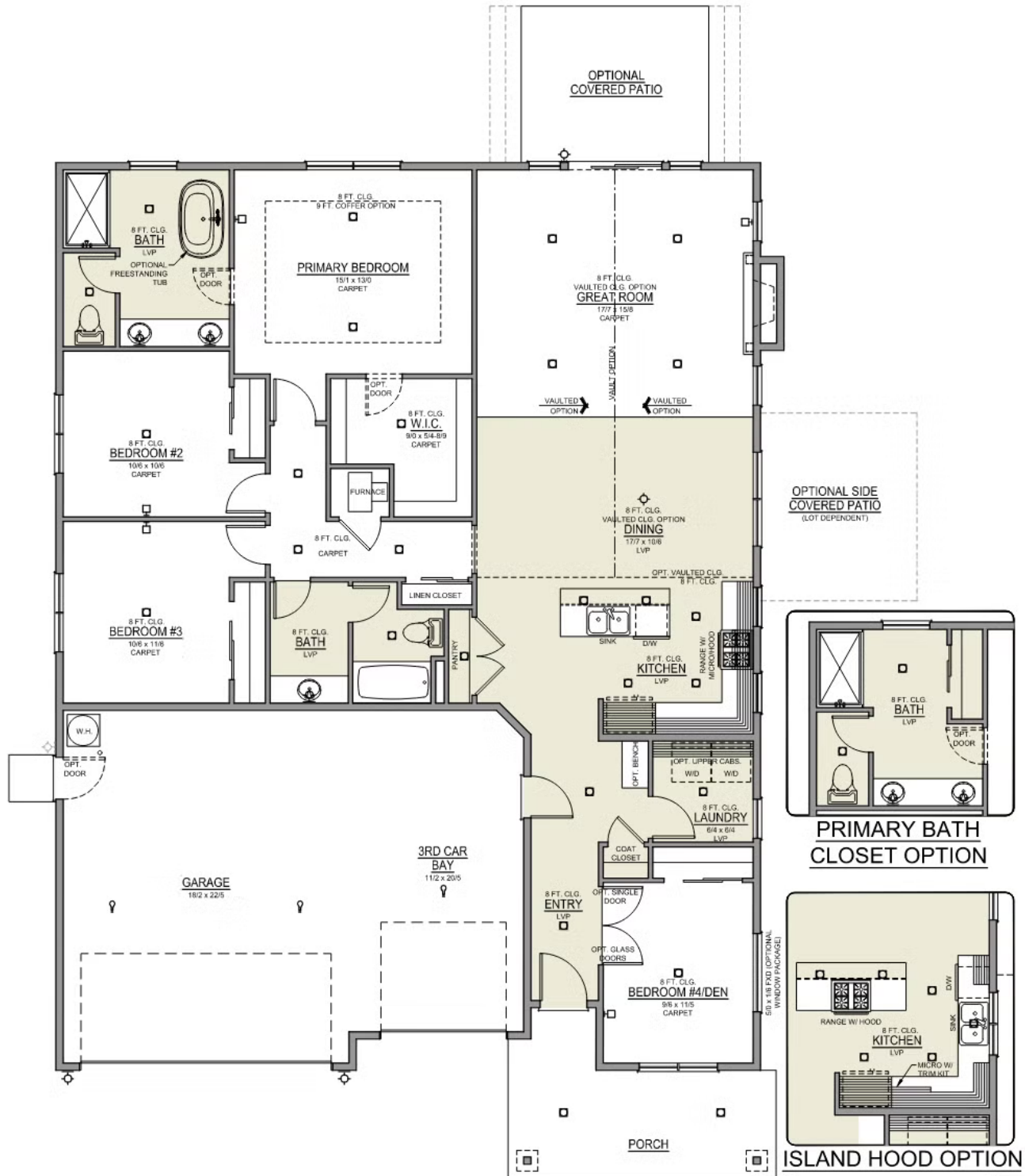
🚗 3 Car Garage

💰 399,900

Hope 3-Car

1,906 Sq. Ft.

4 Bedroom, 2 Bath



CIMMARON TERRACE

OPTIONS

HOPE PREMIER
LOT 27

1642 NE 8th Pl. – \$10k Incentive Hermiston, OR
97838

 4 Bedrooms  2 Bathrooms  1,906 Sq. Ft.  3 Car Garage  399,900

- Interior Color Package: "Horizon Pine"
- Exterior Color Package: Spring Mist
- Light Fixtures: Acadia
- Doors: Hardware Standard. "Cove" knobs / "Amador" front door handle.
- Bathroom: Shower Enclosure Glass Color Choice
- Electrical Package: Tech Package Pre Wire – Includes Panel, 110 outlet, 1 Dual Wall Plate (Coax & Ethernet) in Great Room
- Package: Optional Windows
- Vault in Great Room and Coffered Ceiling in Primary Bedroom
- Kitchen: Island Range with Hood. 36" Cabinets. Sliding Window over the sink.
- Cabinets: Knobs and Pulls
- Quartz Counters and Backsplash in Kitchen
- Quartz Counters and Backsplash in Guest Bath
- Quartz Counters and Backsplash in Master Bath
- Covered Patio – Rear – 14x10
- Recessed LED: Add 2 for 4 total+ Dimmer in Primary Bedroom.
- Built in Bench
- Package: Optional 6/8 Interior Doors (Premier Series Only)
- LVP Flooring: Hallway Down
- Garage: Garage Door Opener
- Garage: Garage Door Opener Wireless Keypad
- Air Conditioner – PreWire not previously selected
- Fireplace (Direct Vent) with Mantel and Stone Surround
- Exterior Landscape: Backyard Landscaping. Up to a 60-ft wide lot
- Farm Sink: Stainless Steel Single Bowl
- Faucet: Moen Arbor SRS
- Freestanding Soaker Tub
- Price Improvement
- Note: Moen – color choice BLACK; Exterior: Body SW7042, Trim: SW7045, Accent: SW7048 – Masonry: Nantucket



541-403-5150

In a continual effort to improve our product, MonteVista Homes reserves the right to change product design, features, materials, floor plans, specifications, prices and terms without prior notice. Square footage stated or implied are approximate. Images may be representative of future home and show what's possible not what's included. Seller is a licensed real estate broker in the State of Oregon.

CCB#203709

