

# CIMMARON TERRACE

HOPE PREMIER  
LOT 1

852 E Montana Ave. - \$10k Incentive Hermiston,  
OR 97838

🏠 4 Bedrooms    🚿 2 Bathrooms    🏠 1,906 Sq. Ft.    🚗 3 Car Garage    💰 399,994

MOVE-IN READY



V - Farmhouse



- \$10k Incentive (see agent for details)
- 3 Car Garage
- Kitchen Island with Sink

- Open Great Room with Gas Fireplace
- Quartz Countertops throughout Home
- Stainless Steel Appliances

 **MonteVista Homes &  
PacWest Realty Group**

**541-403-5150**

*In a continual effort to improve our product, MonteVista Homes reserves the right to change product design, features, materials, floor plans, specifications, prices and terms without prior notice. Square footage stated or implied are approximate. Images may be representative of future home and show what's possible not what's included. Seller is a licensed real estate broker in the State of Oregon. CCB#203709*



# CIMMARON TERRACE

HOPE PREMIER  
LOT 1

852 E Montana Ave. - \$10k Incentive Hermiston,

OR 97838

🏠 4 Bedrooms

🚿 2 Bathrooms

🏠 1,906 Sq. Ft.

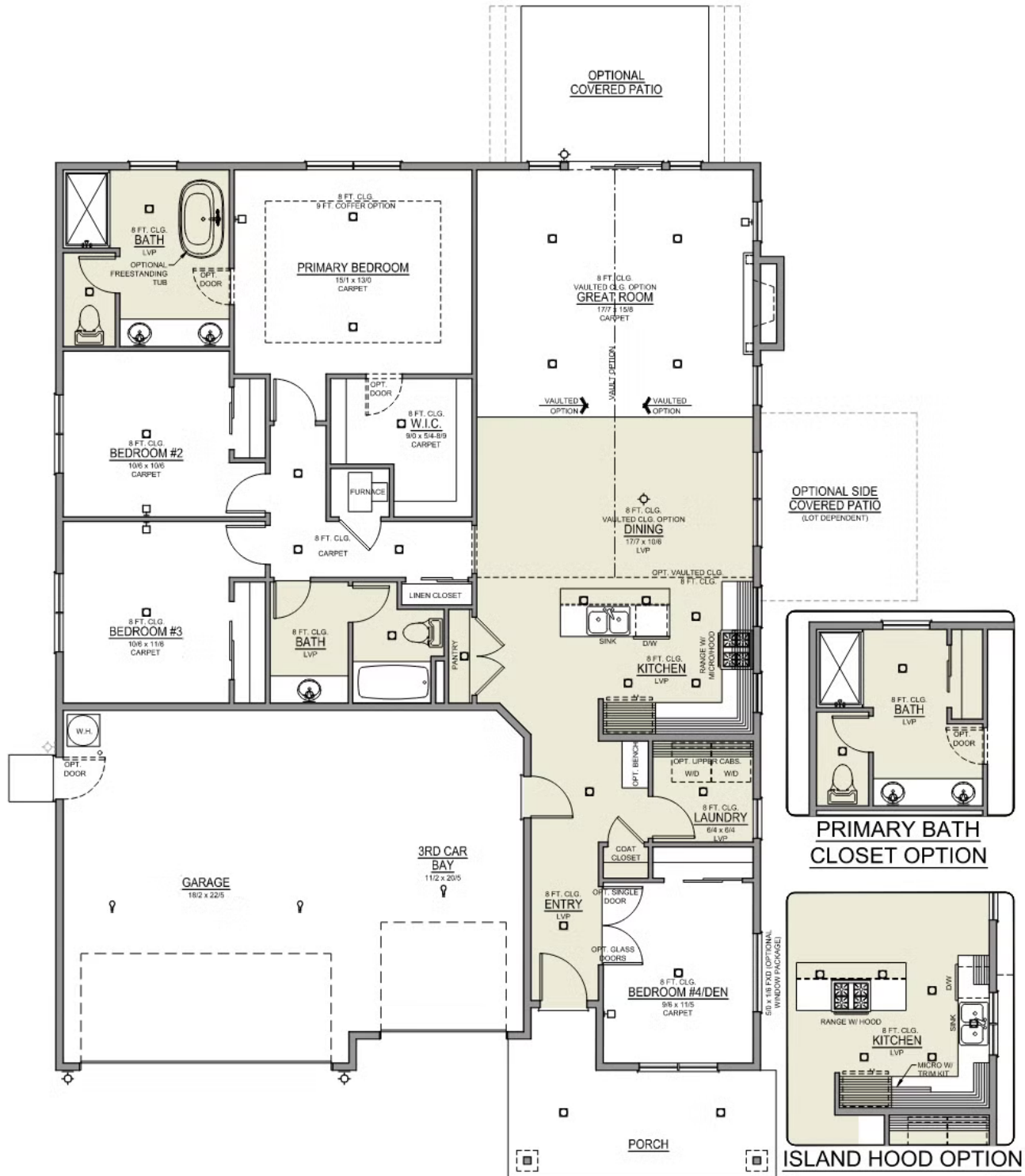
🚗 3 Car Garage

💰 399,994

Hope 3-Car

1,906 Sq. Ft.

4 Bedroom, 2 Bath



# CIMMARON TERRACE

## OPTIONS

HOPE PREMIER  
LOT 1

852 E Montana Ave. - \$10k Incentive Hermiston,

OR 97838

 4 Bedrooms  2 Bathrooms  1,906 Sq. Ft.  3 Car Garage  399,994

- Interior Color Package - Linen - Painted Cabinets (All cabinets in house MUST be selected as "PAINTED")
- Exterior Color Package - Dover
- Light Fixtures Freemont
- Door Hardware: Cove
- Shower Enclosure Glass Color Choice
- Package: Corner Lot - Includes Window trim on Corner Side, Flatwork and Corner Landscaping
- Package: Tech Package Pre Wire - Includes Panel, 110 outlet, 1 Dual Wall Plate (Coax & Ethernet) in Great Room
- Vault in Great Room and Coffered Ceiling in Primary Bedroom
- Kitchen: Island Range with Hood. 36" Cabinets. PAINTED Kitchen & Bathroom Cabinets. Sliding Window over the sink.
- Quartz Counters and Backsplash in Kitchen
- Quartz Counters and Backsplash in Guest Bath
- Quartz Counters and Backsplash in Master Bath
- Covered Patio - Side - 12x10
- Recessed LED: Add 2 for 4 total+ Dimmer in Primary Bedroom.
- Built in Bench
- Linen Closet In Lieu Of Freestanding Tub
- Garage Door Opener
- Garage: Garage Door Opener Wireless Keypad
- Air Conditioner - PreWire not previously selected
- Fireplace (Direct Vent) with Mantel and Stone Surround
- Exterior Landscape: Backyard Landscaping. Up to a 60-ft wide lot
- Farm Sink: Stainless Steel Single Bowl
- Faucet: Grohe Concetto Faucet



**541-403-5150**

*In a continual effort to improve our product, MonteVista Homes reserves the right to change product design, features, materials, floor plans, specifications, prices and terms without prior notice. Square footage stated or implied are approximate. Images may be representative of future home and show what's possible not what's included. Seller is a licensed real estate broker in the State of Oregon.*  
CCB#203709

