

Premier Collection

# JEFFERSON PREMIER

CIMMARON TERRACE

🏠 4 Bedrooms

🚿 2.5 Bathrooms

🏠 1,761 Sq. Ft.

🚗 2 Car Garage



T - Traditional



U - Craftsman



V - Farmhouse



- Guest Suite or Den on Main Level
- 9 Foot Ceilings on Main Level
- Kitchen Island with Sink
- Kitchen Pantry

- Great Room with Gas Fireplace
- Primary Suite with Walk-in Closet
- Quartz Countertops throughout Home
- Stainless Steel Appliances

 **MonteVista Homes &  
PacWest Realty Group**

**541-403-5150**

*In a continual effort to improve our product, MonteVista Homes reserves the right to change product design, features, materials, floor plans, specifications, prices and terms without prior notice. Square footage stated or implied are approximate. Images may be representative of future home and show what's possible not what's included. Seller is a licensed real estate broker in the State of Oregon. CCB#203709*



# JEFFERSON PREMIER

CIMMARON TERRACE

4 Bedrooms

2.5 Bathrooms

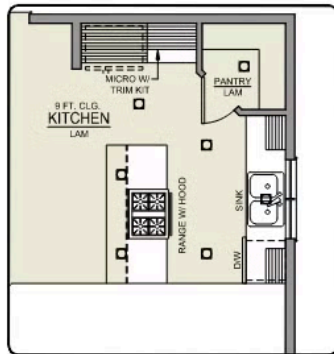
1,761 Sq. Ft.

2 Car Garage

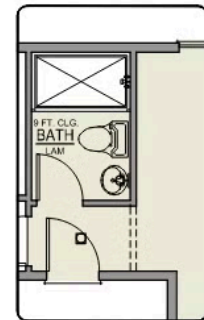
## Jefferson 2-Car

1,761 Sq. Ft.

4 Bedroom, 2.5 Bath



ISLAND HOOD OPTION



BATHROOM OPTION



MAIN FLOOR

Premier Collection

# JEFFERSON PREMIER

CIMMARON TERRACE

🏠 4 Bedrooms

🚿 2.5 Bathrooms

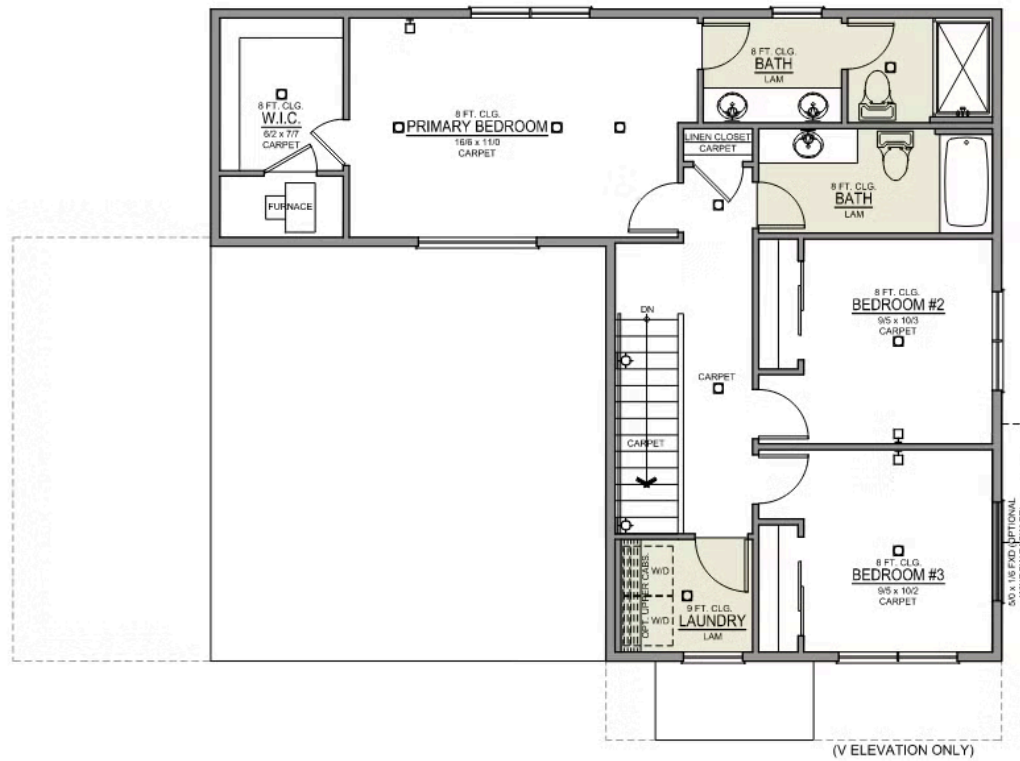
🏠 1,761 Sq. Ft.

🚗 2 Car Garage

## Jefferson 2-Car

1,761 Sq. Ft.

4 Bedroom, 2.5 Bath



UPPER FLOOR