

# Cimmaron Terrace

Jefferson Premier  
LOT 16

834 NE Jaci Ct Hermiston, OR 97838

4 Bedrooms

3 Bathrooms

1,761 Sq. Ft.

2 Car Garage

371,900

UNDER CONSTRUCTION



V - FARMHOUSE



- Guest Suite or Den on Main Level
- 9 Foot Ceilings on Main Level
- Kitchen Island with Sink
- Kitchen Pantry

- Great Room with Gas Fireplace
- Primary Suite with Walk-in Closet
- Quartz Countertops throughout Home
- Stainless Steel Appliances

MonteVista  
HOMES

541-403-5150

In a continual effort to improve our product, MonteVista Homes reserves the right to change product design, features, materials, floor plans, specifications, prices and terms without prior notice. Square footage stated or implied are approximate. Images may be representative of future home and show what's possible not what's included. Seller is a licensed real estate broker in the State of Oregon. CCB#203709



# Cimmaron Terrace

Jefferson Premier  
LOT 16

834 NE Jaci Ct Hermiston, OR 97838

🛏 4 Bedrooms

🚿 3 Bathrooms

🏠 1,761 Sq. Ft.

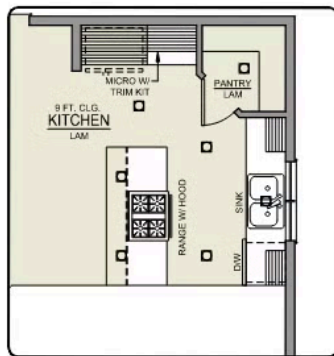
🚗 2 Car Garage

🏷 371,900

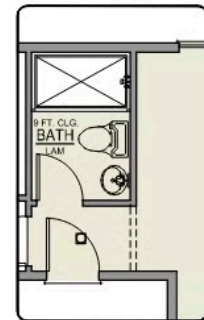
## Jefferson 2-Car

1,761 Sq. Ft.

4 Bedroom, 2.5 Bath



ISLAND HOOD OPTION



BATHROOM OPTION



MAIN FLOOR

# Cimmaron Terrace

Jefferson Premier  
LOT 16

834 NE Jaci Ct Hermiston, OR 97838

🛏 4 Bedrooms

🚿 3 Bathrooms

🏠 1,761 Sq. Ft.

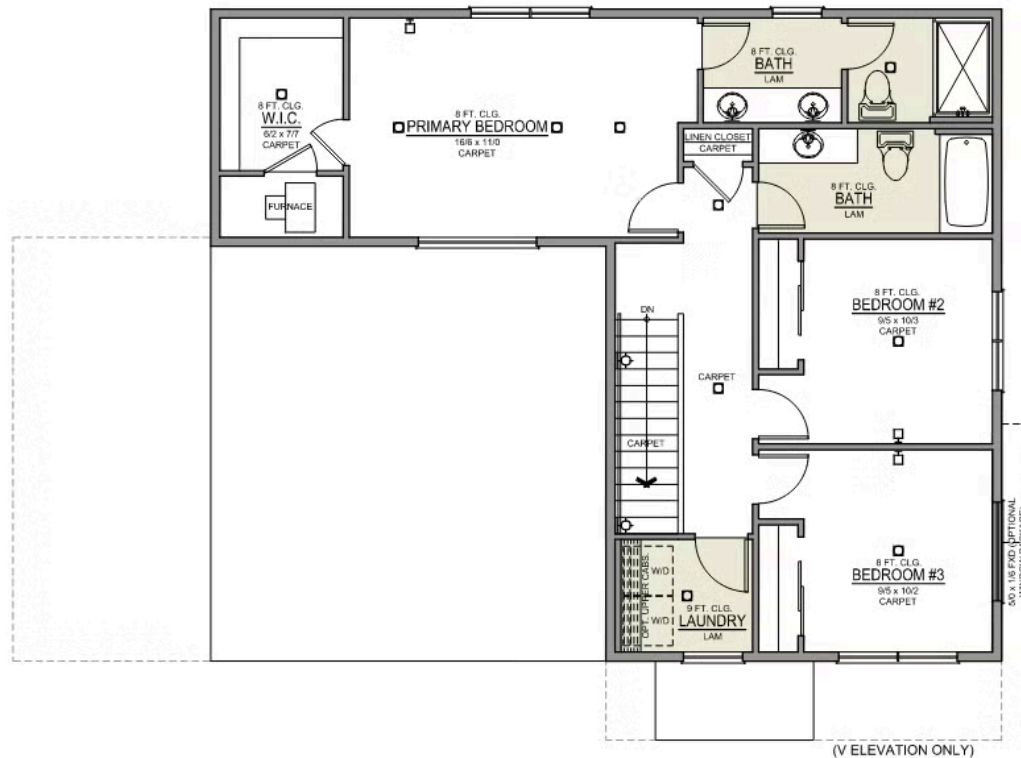
🚗 2 Car Garage

🏷 371,900

## Jefferson 2-Car

1,761 Sq. Ft.

4 Bedroom, 2.5 Bath



UPPER FLOOR

# Cimmaron Terrace

## OPTIONS

Jefferson Premier  
LOT 16

834 NE Jaci Ct Hermiston, OR 97838

 4 Bedrooms

 3 Bathrooms

 1,761 Sq. Ft.

 2 Car Garage

 371,900

- Interior Color Package: "Granite Shoreline". Painted Cabinets (All cabinets in house MUST be selected as "PAINTED")
- Exterior Color Package: Alpine Trail
- Light Fixtures: Acadia
- Doors: Hardware Standard. "Cove" knobs / "Amador" front door handle.
- Bathroom: Shower Enclosure Glass Color Choice
- Electrical: Tech Package Pre Wire - Includes Panel, 110 outlet, 1 Dual Wall Plate (Coax & Ethernet) in Great Room
- Kitchen: 30" Cabinets. PAINTED Kitchen & Bathroom Cabinets.
- Counters: Quartz Counters and Backsplash in Kitchen
- Counters: Quartz Counters and Backsplash in Guest Bath
- Counters: Quartz Counters and Backsplash in Master Bath
- Bathroom: JEFFERSON only - Add 5' Shower in Downstairs Bathroom
- Exterior Covered Patio: Rear - 12x10
- Kitchen: Pendant Lights over Kitchen Island - In place of recessed LED
- Electrical: Recessed LEDs. Add 2 for 4 total+ Dimmer in Primary Bedroom.
- Doors Package: Add Optional 6/8 Interior Doors (Premier Series Only)
- Flooring: Hallway Up - Wood Laminate (Casita Court)
- Garage: Garage Door Opener
- Garage: Garage Door Opener Wireless Keypad
- HVAC: Air Conditioner - PreWire not previously selected
- Fireplace: (Direct Vent) with Mantel and Stone Surround
- Kitchen: Farm Sink - Stainless Steel Single Bowl
- Kitchen or Laundry Sink: Upgrade Faucet to Moen Arbor - Specify Color (Black or SRS), Quantity and Location(s)

**MonteVista**  
HOMES

**541-403-5150**

*In a continual effort to improve our product, MonteVista Homes reserves the right to change product design, features, materials, floor plans, specifications, prices and terms without prior notice. Square footage stated or implied are approximate. Images may be representative of future home and show what's possible not what's included. Seller is a licensed real estate broker in the State of Oregon. CCB#203709*

