

CIMMARON TERRACE

SYCAMORE PREMIER LOT 13

803 NE Jaci Ct. Hermiston, OR 97838

🏠 3 Bedrooms

🚿 2 Bathrooms

🏠 1,553 Sq. Ft.

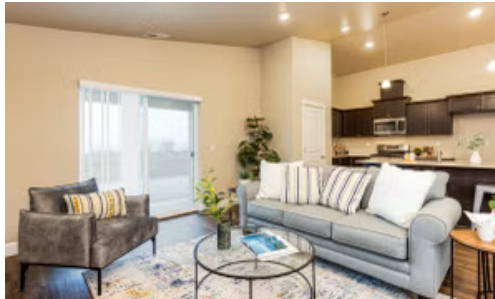
🚗 2 Car Garage

💰 354,997

UNDER CONSTRUCTION



V - Farmhouse, 2 Car



- Kitchen Center Island with Sink
- Kitchen Pantry
- Concept Living with Gas Fireplace
- Primary Suite with Walk-in Closet

- Quartz Countertops throughout Home
- Stainless Steel Appliances
- Covered Rear Patio

 **MonteVista Homes &
PacWest Realty Group**

541-403-5150

In a continual effort to improve our product, MonteVista Homes reserves the right to change product design, features, materials, floor plans, specifications, prices and terms without prior notice. Square footage stated or implied are approximate. Images may be representative of future home and show what's possible not what's included. Seller is a licensed real estate broker in the State of Oregon. CCB#203709



CIMMARON TERRACE

OPTIONS

SYCAMORE PREMIER

LOT 13

803 NE Jaci Ct. Hermiston, OR 97838

 3 Bedrooms

 2 Bathrooms

 1,553 Sq. Ft.

 2 Car Garage

 354,997

- Interior Color Package: "Crystal Heights". Painted Cabinets (All cabinets in house MUST be selected as "PAINTED")
- Exterior Color Package: Cascade Falls
- Light Fixtures: Acadia
- Doors: Hardware Standard. "Cove" knobs / "Amador" front door handle.
- Bathroom: Upgrade finishes to BLACK - All bathrooms. Soaker Tub NOT included. (Plumbing Fixtures, bath accessories and shower door hardware)
- Bathroom: Shower Enclosure Glass Color Choice
- Electrical Package: Tech Package Pre Wire - Includes Panel, 110 outlet, 1 Dual Wall Plate (Coax & Ethernet) in Great Room
- Windows Package: Optional Windows
- Ceilings: Vault in Great Room and Coffered Ceiling in Primary Bedroom
- Kitchen: 30" Cabinets. PAINTED Kitchen & Bathroom Cabinets.
- Cabinets: Knobs and Pulls
- Counters: Quartz Counters and Backsplash in Kitchen
- Counters: Quartz Counters and Backsplash in Guest Bath
- Counters: Quartz Counters and Backsplash in Master Bath
- Kitchen: Pendant Lights over Kitchen Island - In place of recessed LED
- Doors Package: Add Optional 6/8 Interior Doors (Premier Series Only)
- Flooring: Hallway Down - Wood Laminate (Casita Court)
- Garage: Garage Door Opener
- Garage: Garage Door Opener Wireless Keypad
- HVAC: Air Conditioner - PreWire not previously selected
- Fireplace: (Direct Vent) with Mantel and Stone Surround



541-403-5150

In a continual effort to improve our product, MonteVista Homes reserves the right to change product design, features, materials, floor plans, specifications, prices and terms without prior notice. Square footage stated or implied are approximate. Images may be representative of future home and show what's possible not what's included. Seller is a licensed real estate broker in the State of Oregon.

CCB#203709

