

# CIMMARON TERRACE

THEILSEN PREMIER  
LOT 28

1620 NE 8th Pl. - \$10k Incentive Hermiston, OR  
97838

🏠 4 Bedrooms    🚿 2.5 Bathrooms    🏠 2,373 Sq. Ft.    🚗 2 Car Garage    💰 439,900

UNDER CONSTRUCTION



U - Craftsman, 2 Car



- \$10k Incentive if the home closes by the end of the year
- Primary Suite on Main Level
- Walk-in Closet in Primary
- Great Room with Gas Fireplace
- Upstairs Bonus Room / Loft
- Kitchen Island and Pantry
- 9 Foot Ceilings throughout Main Level
- Quartz Countertops throughout Home
- Stainless Steel Appliances
- Covered Front Porch

 **MonteVista Homes &  
PacWest Realty Group**

**541-403-5150**

*In a continual effort to improve our product, MonteVista Homes reserves the right to change product design, features, materials, floor plans, specifications, prices and terms without prior notice. Square footage stated or implied are approximate. Images may be representative of future home and show what's possible not what's included. Seller is a licensed real estate broker in the State of Oregon. CCB#203709*



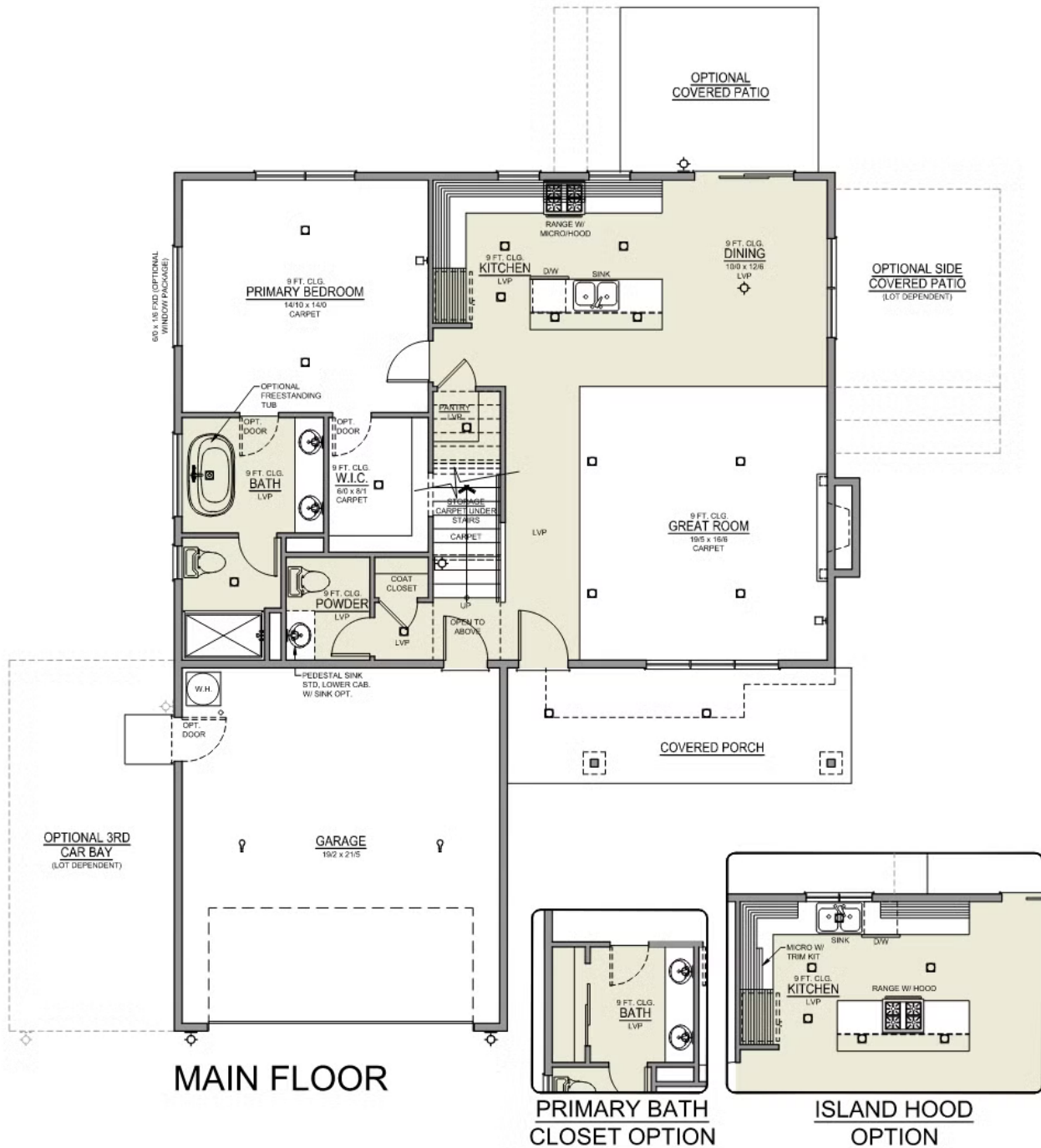
# CIMMARON TERRACE

## THEILSEN PREMIER LOT 28

1620 NE 8th Pl. - \$10k Incentive Hermiston, OR  
97838

4 Bedrooms 2.5 Bathrooms 2,373 Sq. Ft. 2 Car Garage 439,900

Thielsen 2-Car  
2,373 Sq. Ft.  
4 Bedroom, 3 Bath



# CIMMARON TERRACE

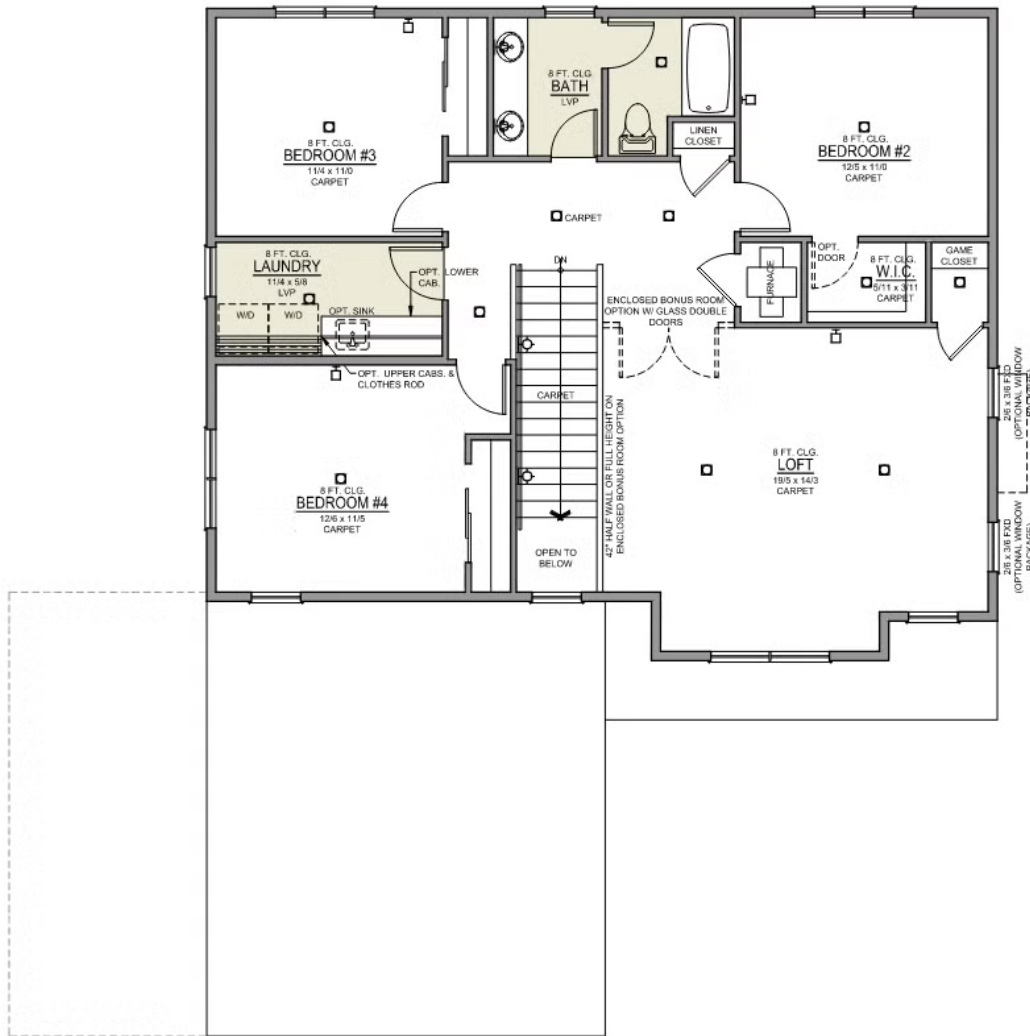
THEILSEN PREMIER  
LOT 28

1620 NE 8th Pl. - \$10k Incentive Hermiston, OR

97838

4 Bedrooms 2.5 Bathrooms 2,373 Sq. Ft. 2 Car Garage 439,900

Thielsen 2-Car  
2,373 Sq. Ft.  
4 Bedroom, 3 Bath



UPPER FLOOR

# CIMMARON TERRACE

## OPTIONS

THEILSEN PREMIER

LOT 28

1620 NE 8th Pl. – \$10k Incentive Hermiston, OR

97838

 4 Bedrooms  2.5 Bathrooms  2,373 Sq. Ft.  2 Car Garage  439,900

- Interior Color Package: "Horizon Pine"
- Exterior Color Package: Cascade Falls
- Light Fixtures: Acadia
- Doors: Hardware Standard. "Cove" knobs / "Amador" front door handle.
- Bathroom: Upgrade finishes to BLACK - All bathrooms. Soaker Tub INCLUDED. (Plumbing Fixtures, bath accessories and shower door hardware)
- Bathroom: Shower Enclosure Glass Color Choice
- Electrical Package: Tech Package Pre Wire - Includes Panel, 110 outlet, 1 Dual Wall Plate (Coax & Ethernet) in Great Room
- Windows Package: Optional Windows
- Kitchen: Island Range and Hood. 30" Cabinets. Sliding Window over the sink.
- Laundry Room: Lower Cabs With Quartz Top and Backsplash With Optional Sink & Pull-Out Faucet SRS
- Cabinets: Knobs and Pulls
- Counters: Quartz Counters and Backsplash in Kitchen
- Counters: Quartz Counters and Backsplash in Guest Bath
- Counters: Quartz Counters and Backsplash in Master Bath
- Exterior Covered Patio: Rear - 12x10
- Electrical: Recessed LEDs. Add 2 for 4 total+ Dimmer in Primary Bedroom.
- Electrical: Recessed LEDs. Add 2 for 4 total + Dimmer in Bonus Room or Loft
- Doors Package: Add Optional 6/8 Interior Doors (Premier Series Only)
- Flooring: Great Room - Wood Laminate (Casita Court)
- Garage: Garage Door Opener
- Garage: Garage Door Opener Wireless Keypad
- HVAC: Air Conditioner - PreWire not previously selected
- Fireplace: (Direct Vent) with Mantel and Stone Surround
- Kitchen: Farm Sink - Stainless Steel Single Bowl
- Kitchen: Upgrade Faucet to Moen Arbor SRS
- Bathroom: Freestanding Soaker Tub



541-403-5150

*In a continual effort to improve our product, MonteVista Homes reserves the right to change product design, features, materials, floor plans, specifications, prices and terms without prior notice. Square footage stated or implied are approximate. Images may be representative of future home and show what's possible not what's included. Seller is a licensed real estate broker in the State of Oregon.*

CCB#203709

