

# Willowbrook

Aspen Premier  
LOT 111

236 NW Par Ave. Madras, OR 97741

3 Bedrooms

2 Bathrooms

1,702 Sq. Ft.

2 Car Garage

398,900

UNDER CONSTRUCTION



V - FARMHOUSE



- Quartz Countertops throughout Home
- Stainless Steel Appliances
- Kitchen Island with Sink
- Corner Kitchen Pantry

- Great Room with Gas Fireplace
- Primary Suite with Walk-in Closet
- Office, Study, or School Room

MonteVista  
HOMES

541-234-8789

*In a continual effort to improve our product, MonteVista Homes reserves the right to change product design, features, materials, floor plans, specifications, prices and terms without prior notice. Square footage stated or implied are approximate. Images may be representative of future home and show what's possible not what's included. Seller is a licensed real estate broker in the State of Oregon. CCB#203709*



# Willowbrook

## Aspen Premier LOT 111

236 NW Par Ave. Madras, OR 97741

3 Bedrooms

2 Bathrooms

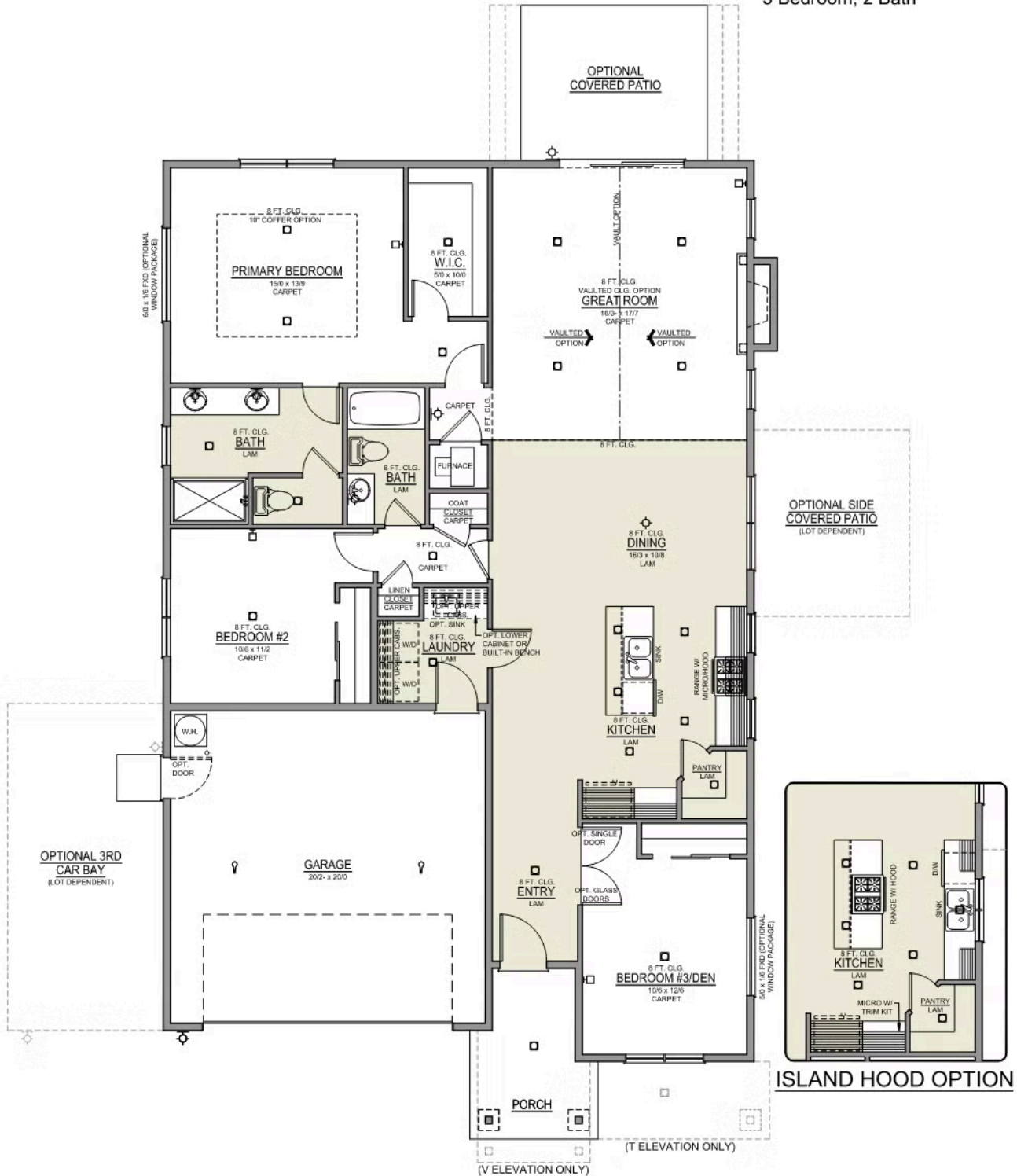
1,702 Sq. Ft.

2 Car Garage

398,900

### Aspen 2-Car

1,702 Sq. Ft.  
3 Bedroom, 2 Bath



 3 Bedrooms

 2 Bathrooms

 1,702 Sq. Ft.

 2 Car Garage

 398,900

- Interior Color Package: "Granite Shoreline". Painted Cabinets (All cabinets in house MUST be selected as "PAINTED")
- Exterior Color Package: Alpine Trail
- Light Fixtures: Acadia
- Doors: Hardware Standard. "Cove" knobs / "Amador" front door handle.
- Bathroom: Shower Enclosure Glass Color Choice
- Electrical Package: Tech Package Pre Wire - Includes Panel, 110 outlet, 1 Dual Wall Plate (Coax & Ethernet) in Great Room
- Windows Package: Optional Windows
- Ceilings: Vault in Great Room and Coffered Ceiling in Primary Bedroom
- Kitchen: 30" Cabinets. PAINTED Kitchen & Bathroom Cabinets.
- Cabinets: Knobs and Pulls
- Counters: Quartz Counters and Backsplash in Kitchen
- Counters: Quartz Counters and Backsplash in Guest Bath
- Counters: Quartz Counters and Backsplash in Master Bath
- Exterior Covered Patio: Rear - 12x10
- Doors Package: Add Optional 6/8 Interior Doors (Premier Series Only)
- Flooring: Great Room - Wood Laminate (Casita Court)
- Garage: Garage Door Opener
- Garage: Garage Door Opener Wireless Keypad
- HVAC: Air Conditioner PreWire (Dedicated 220 Outlet)
- Fireplace: (Direct Vent) with Mantel and Stone Surround