

# WILLOWBROOK

## CAMELLIA PREMIER LOT 112

262 NW Par Ave. Madras, OR 97741

🏠 3 Bedrooms

🚿 2 Bathrooms

🏠 1,249 Sq. Ft.

🚗 2 Car Garage

🏷️ 359,997

UNDER CONSTRUCTION



U - Craftsman



- \*\$3k Incentive (see sales agent for more details)
- Quartz Countertops throughout Home
- Stainless Steel Appliances
- Kitchen Island with Sink
- Great Room with Gas Fireplace

 **MonteVista Homes &  
PacWest Realty Group**

**541-234-8789**

*In a continual effort to improve our product, MonteVista Homes reserves the right to change product design, features, materials, floor plans, specifications, prices and terms without prior notice. Square footage stated or implied are approximate. Images may be representative of future home and show what's possible not what's included. Seller is a licensed real estate broker in the State of Oregon. CCB#203709*



🏠 3 Bedrooms

🚿 2 Bathrooms

🏠 1,249 Sq. Ft.

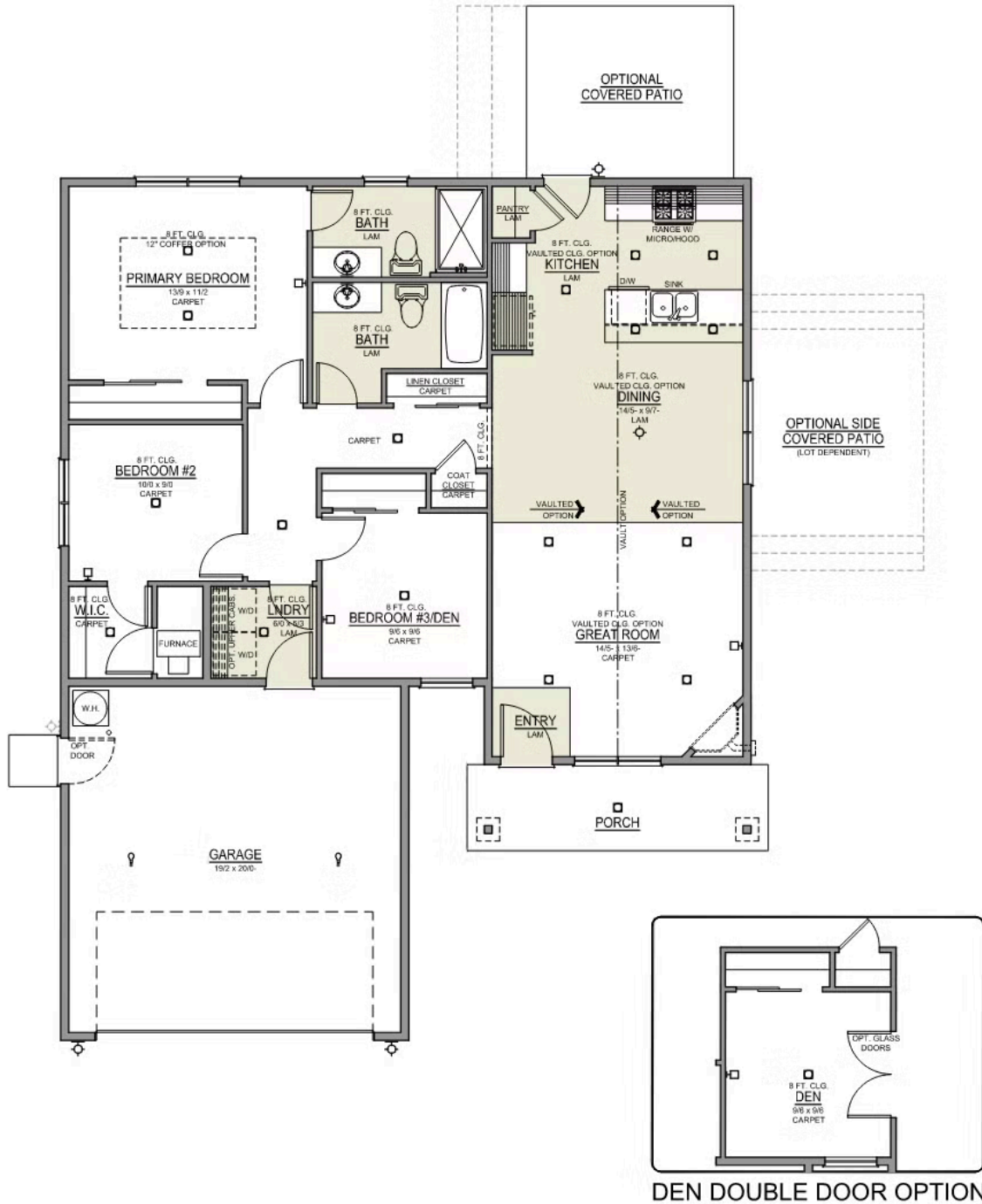
🚗 2 Car Garage

💰 359,997

## Camellia 2-Car

1,249 Sq. Ft.

3 Bedroom, 2 Bath



 3 Bedrooms

 2 Bathrooms

 1,249 Sq. Ft.

 2 Car Garage

 359,997

- Interior Color Package: "Crystal Heights". Painted Cabinets (All cabinets in house MUST be selected as "PAINTED")
- Exterior Color Package: Spring Mist
- Light Fixtures: Acadia
- Doors: Hardware Standard. "Cove" knobs / "Amador" front door handle.
- Bathroom: Upgrade finishes to BLACK - All bathrooms. Soaker Tub NOT included. (Plumbing Fixtures, bath accessories and shower door hardware)
- Bathroom: Shower Enclosure Glass Color Choice
- Electrical Package: Tech Package Pre Wire - Includes Panel, 110 outlet, 1 Dual Wall Plate (Coax & Ethernet) in Great Room
- Vault in Great Room and Coffered Ceiling in Primary Bedroom
- Kitchen: 30" Cabinets. PAINTED Kitchen & Bathroom Cabinets.
- Cabinets: Knobs and Pulls
- Quartz Counters and Backsplash in Kitchen
- Quartz Counters and Backsplash in Guest Bath
- Quartz Counters and Backsplash in Master Bath
- Doors Package: Add Optional 6/8 Interior Doors (Premier Series Only)
- Flooring: Great Room - Wood Laminate (Casita Court)
- Flooring: Hallway Down - Wood Laminate (Casita Court)
- Garage: Garage Door Opener
- Garage: Garage Door Opener Wireless Keypad
- Air Conditioner PreWire (Dedicated 220 Outlet)
- Fireplace (Direct Vent) with Mantel and Stone Surround
- Exterior: Stone on all Front Column(s)
- Kitchen: Farm Sink - Stainless Steel Single Bowl
- Kitchen: Upgrade Faucet to Moen Arbor SRS