

WILLOWBROOK

CHARITY PREMIER
LOT 115

312 NW Par Ave.- \$15k Incentive* Madras, OR
97741

3 Bedrooms 2 Bathrooms 1,892+ Sq. Ft. 2 Car Garage 449,997

UNDER CONSTRUCTION



V - Farmhouse



- *\$15k Incentive if the home closes by the end of the year (see sales agent for more details)
- Private Ensuite to 2nd Bedroom
- Designer Kitchen Island Range Available
- Office, Study, or School Room
- Great Room with Gas Fireplace
- Quartz Countertops throughout Home
- Corner Kitchen Pantry

 **MonteVista Homes &
PacWest Realty Group**

541-234-8789

In a continual effort to improve our product, MonteVista Homes reserves the right to change product design, features, materials, floor plans, specifications, prices and terms without prior notice. Square footage stated or implied are approximate. Images may be representative of future home and show what's possible not what's included. Seller is a licensed real estate broker in the State of Oregon. CCB#203709



WILLOWBROOK

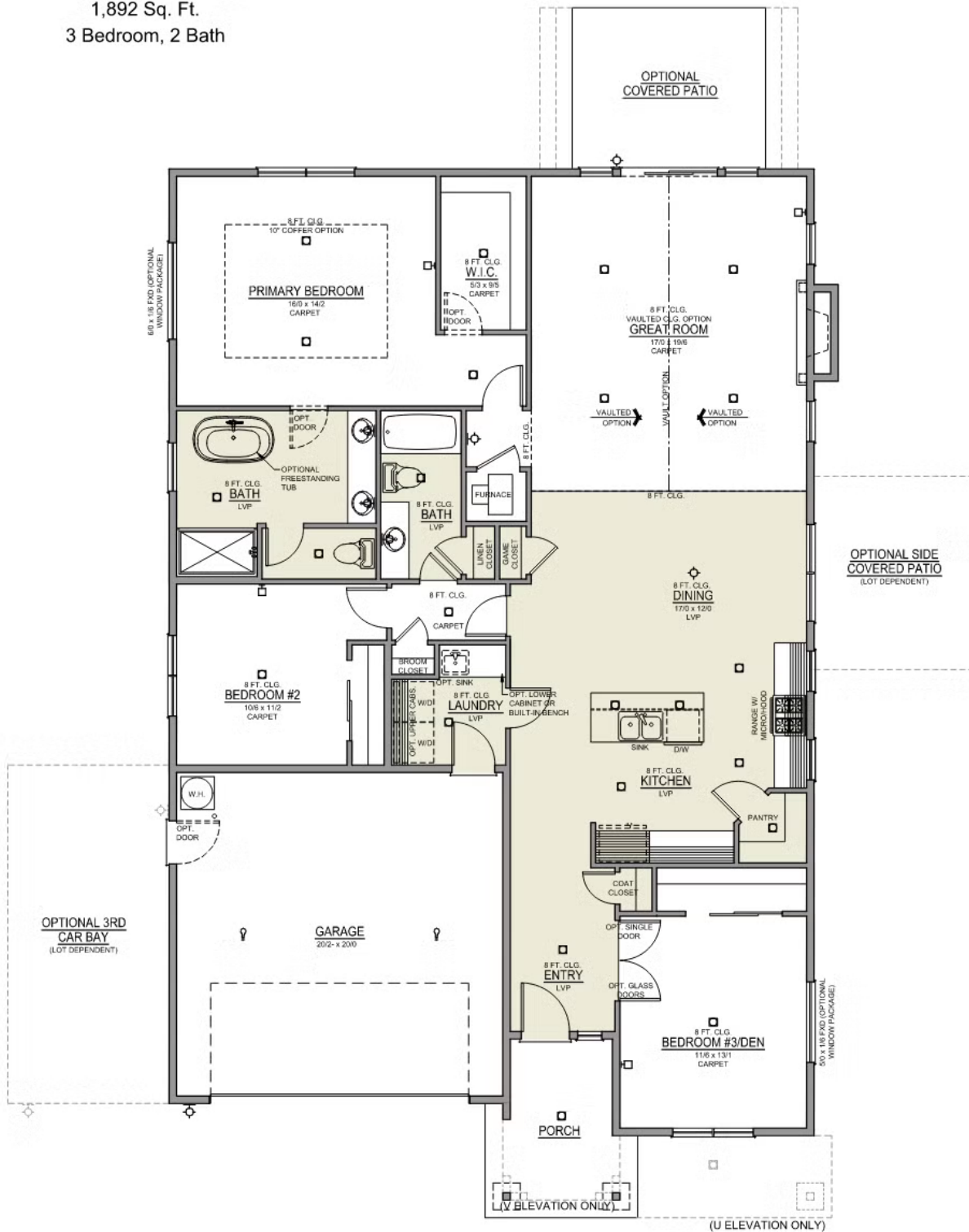
CHARITY PREMIER LOT 115

312 NW Par Ave.- \$15k Incentive* Madras, OR

97741

3 Bedrooms 2 Bathrooms 1,892+ Sq. Ft. 2 Car Garage 449,997

Charity 2-Car
1,892 Sq. Ft.
3 Bedroom, 2 Bath



WILLOWBROOK

OPTIONS

CHARITY PREMIER
LOT 115

312 NW Par Ave.- \$15k Incentive* Madras, OR
97741

 3 Bedrooms  2 Bathrooms  1,892+ Sq. Ft.  2 Car Garage  449,997

- Interior Color Package: "Granite Shoreline". Painted Cabinets (All cabinets in house MUST be selected as "PAINTED")
- Exterior Color Package: Alpine Trail
- Light Fixtures: Acadia
- Doors: Hardware Standard. "Cove" knobs / "Amador" front door handle.
- Shower Enclosure Glass Color Choice
- Package: Tech Package Pre Wire - Includes Panel, 110 outlet, 1 Dual Wall Plate (Coax & Ethernet) in Great Room
- Package: Optional Windows
- Vault in Great Room and Coffered Ceiling in Primary Bedroom
- Kitchen: 36" Cabinets. PAINTED Kitchen & Bathroom Cabinets.
- Cabinets: Knobs and Pulls
- Quartz Counters and Backsplash in Kitchen
- Quartz Counters and Backsplash in Guest Bath
- Quartz Counters and Backsplash in Master Bath
- Covered Patio - Rear - 14x10
- Kitchen: Pendant Lights over Kitchen Island - In place of recessed LED
- Recessed LED: Add 2 for 4 total+ Dimmer in Primary Bedroom.
- Carpentry: Built in Bench
- Package: Optional 6/8 Interior Doors
- Linen Closet In Lieu Of Freestanding Tub
- Garage Door Opener
- Air Conditioner PreWire (Dedicated 220 Outlet)
- Fireplace (Direct Vent) with Mantel and Stone Surround
- Farm Sink: Stainless Steel Single Bowl
- Kitchen: Upgrade Faucet to Moen Arbor SRS



541-234-8789

In a continual effort to improve our product, MonteVista Homes reserves the right to change product design, features, materials, floor plans, specifications, prices and terms without prior notice. Square footage stated or implied are approximate. Images may be representative of future home and show what's possible not what's included. Seller is a licensed real estate broker in the State of Oregon.
CCB#203709

