

# WILLOWBROOK

CHARLOTTE PREMIER  
LOT 93

326 NW Par Ave. Madras, OR 97741

🛏 4 Bedrooms

🚿 2 Bathrooms

🏠 1,701 Sq. Ft.

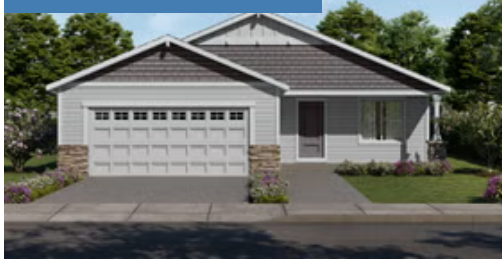
🚗 2 Car Garage

💰 399,997

UNDER CONSTRUCTION



T - Traditional 2 Car



- \*\$3k Incentive (see sales agent for more details)
- Kitchen Island with Sink
- Quartz Countertops throughout Home
- Open Great Room with Gas Fireplace
- Kitchen Pantry
- Stainless Steel Appliances
- Laundry Room

 **MonteVista Homes &  
PacWest Realty Group**

**541-234-8789**

In a continual effort to improve our product, MonteVista Homes reserves the right to change product design, features, materials, floor plans, specifications, prices and terms without prior notice. Square footage stated or implied are approximate. Images may be representative of future home and show what's possible not what's included. Seller is a licensed real estate broker in the State of Oregon. CCB#203709



WILLOWBROOK

CHARLOTTE PREMIER  
LOT 93

326 NW Par Ave. Madras, OR 97741

4 Bedrooms

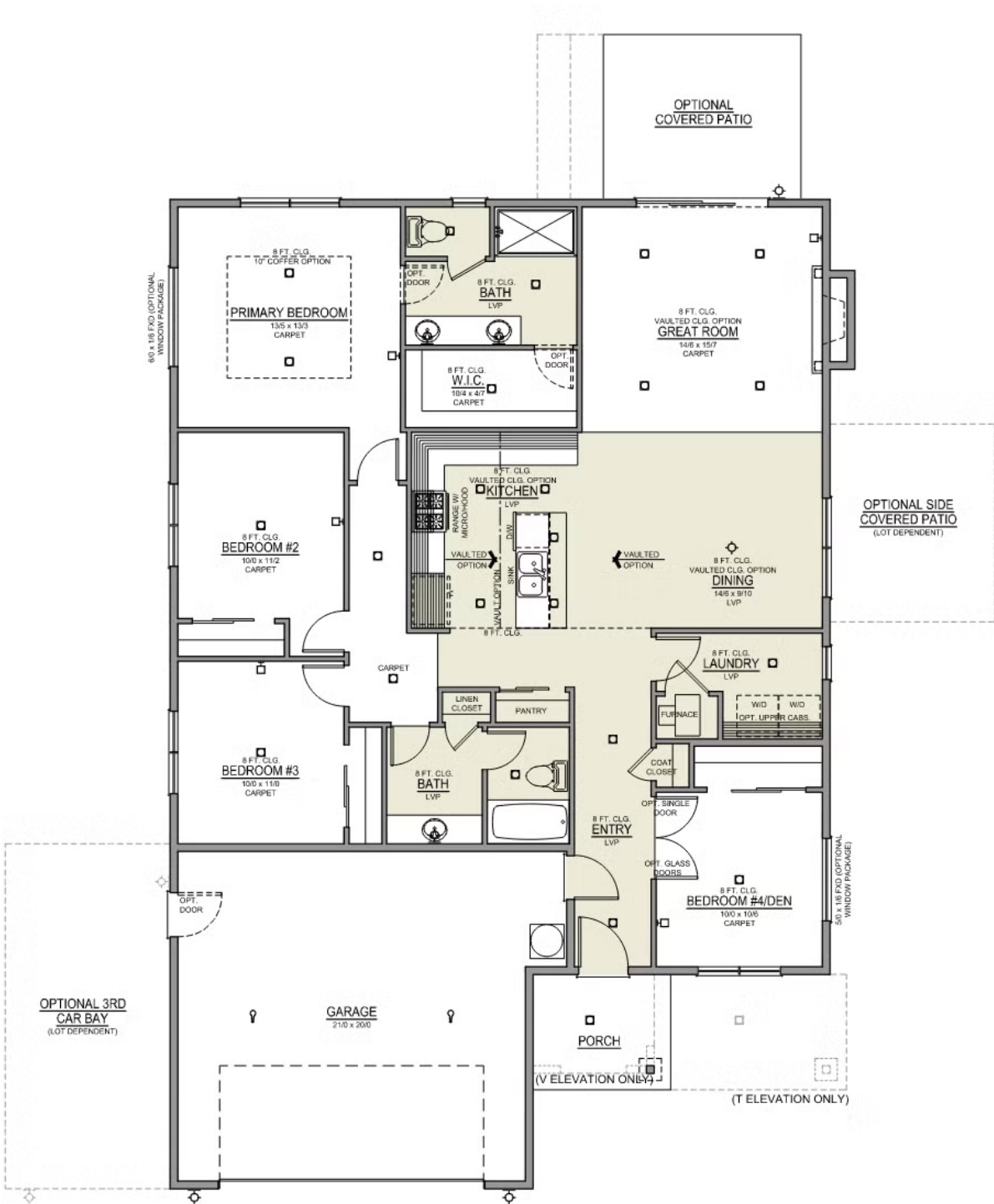
2 Bathrooms

1,701 Sq. Ft.

2 Car Garage

399,997

Charlotte 2-Car  
1,701 Sq. Ft.  
4 Bedroom, 2 Bath



# WILLOWBROOK

## OPTIONS

CHARLOTTE PREMIER  
LOT 93

326 NW Par Ave. Madras, OR 97741

 4 Bedrooms    2 Bathrooms    1,701 Sq. Ft.    2 Car Garage    399,997

- Interior Color Package: "Urban Oasis"
- Exterior Color Package: Spring Mist
- Light Fixtures: Acadia
- Doors: Hardware Standard. "Cove" knobs / "Amador" front door handle.
- Bathroom: Plumbing Fixtures in a "Brushed Nickel" finish.
- Bathroom: Shower Enclosure Glass Color Choice
- Exterior Package: Corner Lot. Includes Window trim on Corner Side, Flatwork and Corner Landscaping
- Electrical Package: Tech Package Pre Wire - Includes Panel, 110 outlet, 1 Dual Wall Plate (Coax & Ethernet) in Great Room
- Windows Package: Optional Windows
- Vault in Great Room and Coffered Ceiling in Primary Bedroom
- Quartz Counters and Backsplash in Kitchen
- Quartz Counters and Backsplash in Guest Bath
- Quartz Counters and Backsplash in Master Bath
- Electrical: Recessed LEDs. Add 2 for 4 total+ Dimmer in Primary Bedroom.
- Doors Package: Add Optional 6/8 Interior Doors (Premier Series Only)
- Garage: Garage Door Opener
- Air Conditioner PreWire (Dedicated 220 Outlet)
- Fireplace (Direct Vent) with Mantel and Stone Surround
- Exterior: Stone on all Front Column(s)
- Exterior: Stone Garage Wing Wall - 2 Car
- Kitchen or Laundry Room: Upgrade Faucet to Moen Arbor SRS



541-234-8789

*In a continual effort to improve our product, MonteVista Homes reserves the right to change product design, features, materials, floor plans, specifications, prices and terms without prior notice. Square footage stated or implied are approximate. Images may be representative of future home and show what's possible not what's included. Seller is a licensed real estate broker in the State of Oregon.*  
CCB#203709

