

WILLOWBROOK

JEFFERSON PREMIER
LOT 110

228 NW Par Ave. Madras, OR 97741

🗨️ 4 Bedrooms

🚿 2.5 Bathrooms

🏠 1,761 Sq. Ft.

🚗 2 Car Garage

🏷️ 399,900

UNDER CONSTRUCTION



U - Craftsman



- Bedroom or Den on Main Level
- 9 Foot Ceilings throughout Main Level
- Kitchen Island with Sink
- Kitchen Pantry

- Open Great Room with Gas Fireplace
- Primary Suite with Walk-in Closet
- Quartz Countertops throughout Home
- Stainless Steel Appliances

 **MonteVista Homes &
PacWest Realty Group**

541-234-8789

In a continual effort to improve our product, MonteVista Homes reserves the right to change product design, features, materials, floor plans, specifications, prices and terms without prior notice. Square footage stated or implied are approximate. Images may be representative of future home and show what's possible not what's included. Seller is a licensed real estate broker in the State of Oregon. CCB#203709



🏠 4 Bedrooms

🚿 2.5 Bathrooms

🏠 1,761 Sq. Ft.

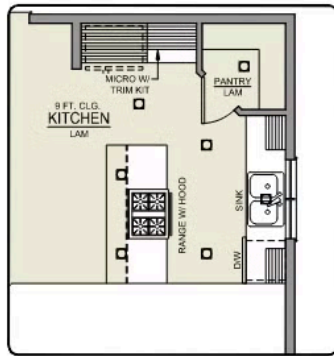
🚗 2 Car Garage

💰 399,900

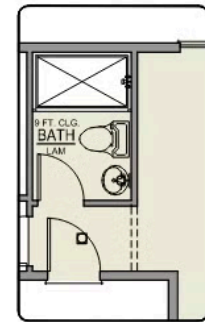
Jefferson 2-Car

1,761 Sq. Ft.

4 Bedroom, 2.5 Bath



ISLAND HOOD OPTION



BATHROOM OPTION



MAIN FLOOR

🏠 4 Bedrooms

🚿 2.5 Bathrooms

🏠 1,761 Sq. Ft.

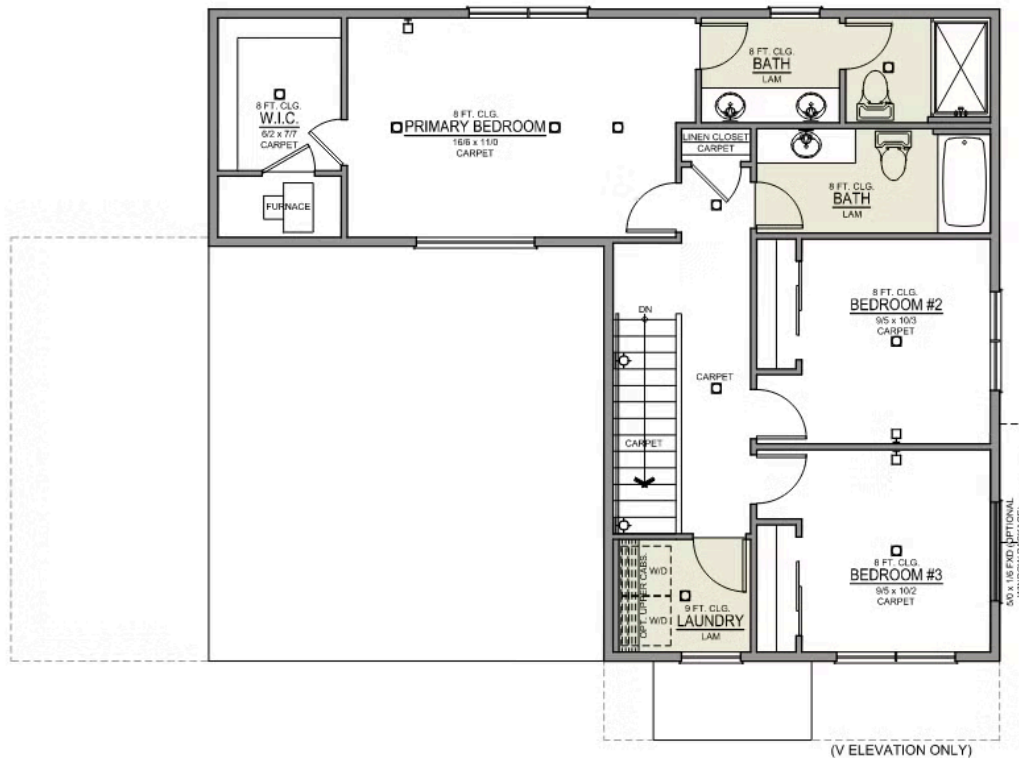
🚗 2 Car Garage

🏷️ 399,900

Jefferson 2-Car

1,761 Sq. Ft.

4 Bedroom, 2.5 Bath



UPPER FLOOR

 4 Bedrooms

 2.5 Bathrooms

 1,761 Sq. Ft.

 2 Car Garage

 399,900

- Interior Color Package: "Crystal Heights". Painted Cabinets (All cabinets in house MUST be selected as "PAINTED")
- Exterior Color Package: Cascade Falls
- Light Fixtures: Acadia
- Doors: Hardware Standard. "Cove" knobs / "Amador" front door handle.
- Bathroom: Shower Enclosure Glass Color Choice
- Exterior Package: Corner Lot. Includes Window trim on Corner Side, Flatwork and Corner Landscaping
- Electrical Package: Tech Package Pre Wire - Includes Panel, 110 outlet, 1 Dual Wall Plate (Coax & Ethernet) in Great Room
- Windows Package: Optional Windows
- Kitchen: 36" Cabinets.
- Cabinets: Knobs and Pulls
- Kitchen: Full Height Backsplash
- Counters: Quartz Counters and Backsplash in Kitchen
- Counters: Quartz Counters and Backsplash in Guest Bath
- Counters: Quartz Counters and Backsplash in Master Bath
- Bathroom: JEFFERSON only - Add 5' Shower in Downstairs Bathroom
- Exterior Covered Patio: Rear - 12x10
- Kitchen: Pendant Lights over Kitchen Island - In place of recessed LED
- Doors Package: Add Optional 6/8 Interior Doors (Premier Series Only)
- Doors: Kitchen Pantry Door w/ Glass. Frosted & Border.
- Flooring: Great Room - Wood Laminate (Casita Court)
- Garage: Garage Door Opener
- Garage: Garage Door Opener Wireless Keypad
- HVAC: Air Conditioner PreWire (Dedicated 220 Outlet)
- Fireplace: (Direct Vent) with Mantel and Stone Surround
- Exterior: Stone on all Front Column(s)
- Kitchen: Farm Sink - Stainless Steel Single Bowl