

WILLOWBROOK

MCKENZIE PREMIER
LOT 103

253 NW Par Ave. Madras, OR 97741

🏠 3 Bedrooms

🚿 2 Bathrooms

🏠 1,488 Sq. Ft.

🚗 2 Car Garage

💰 389,900

UNDER CONSTRUCTION



V - Farmhouse 2 Car



- Kitchen Island with Sink
- Kitchen Pantry
- Open Great Room with Gas Fireplace
- Primary Suite with Walk-in Closet

- Quartz Countertops throughout Home
- Stainless Steel Appliances
- Covered Front Porch

 **MonteVista Homes &
PacWest Realty Group**

541-234-8789

In a continual effort to improve our product, MonteVista Homes reserves the right to change product design, features, materials, floor plans, specifications, prices and terms without prior notice. Square footage stated or implied are approximate. Images may be representative of future home and show what's possible not what's included. Seller is a licensed real estate broker in the State of Oregon. CCB#203709



WILLOWBROOK

MCKENZIE PREMIER LOT 103

253 NW Par Ave. Madras, OR 97741

🏠 3 Bedrooms

🚿 2 Bathrooms

🏠 1,488 Sq. Ft.

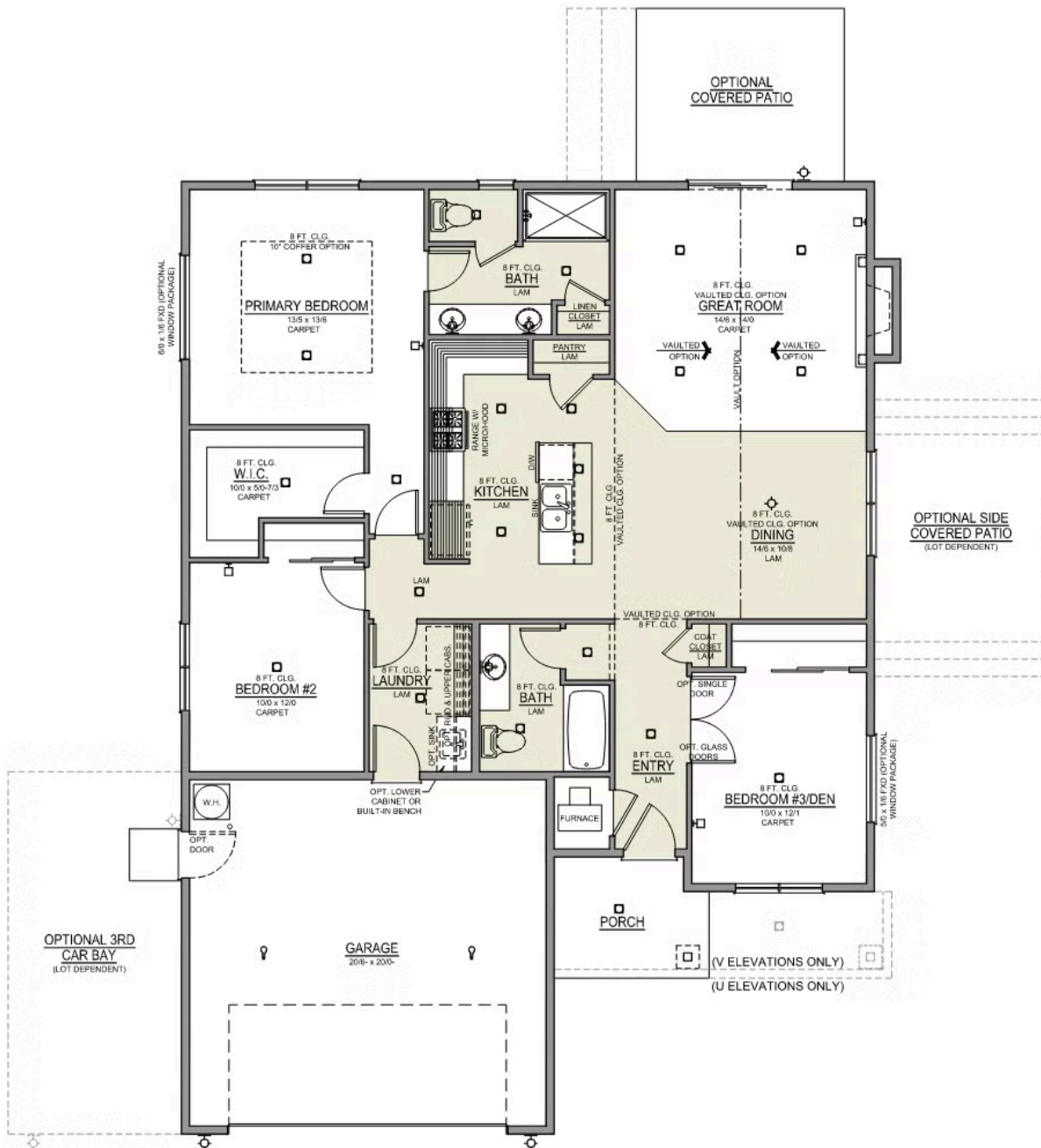
🚗 2 Car Garage

💰 389,900

McKenzie 2-Car

1,488 Sq. Ft.

3 Bedroom, 2 Bath



 3 Bedrooms

 2 Bathrooms

 1,488 Sq. Ft.

 2 Car Garage

 389,900

- Interior Color Package: "Mountain Vogue". Painted Cabinets (All cabinets in house MUST be selected as "PAINTED")
- Exterior Color Package: Alpine Trail
- Doors: Hardware Standard. "Cove" knobs / "Amador" front door handle.
- Bathroom: Upgrade finishes NICKEL - All bathrooms. Soaker Tub NOT included. (Plumbing Fixtures, bath accessories and shower door hardware)
- Bathroom: Shower Enclosure Glass Color Choice
- Kitchen: Designer Kitchen Package. Includes Farm Sink (SS), Upgraded Kitchen Faucet, Full-Height Backsplash, and Under Cab Lights.
- Electrical Package: Tech Package Pre Wire - Includes Panel, 110 outlet, 1 Dual Wall Plate (Coax & Ethernet) in Great Room
- Windows Package: Optional Windows
- Ceilings: Vault in Great Room and Coffered Ceiling in Primary Bedroom
- Kitchen: 30" Cabinets. PAINTED Kitchen & Bathroom Cabinets.
- Cabinets: Knobs and Pulls
- Exterior Covered Patio: Rear - 12x10
- Electrical: Recessed LEDs. Add 2 for 4 total+ Dimmer in Primary Bedroom.
- Doors Package: Add Optional 6/8 Interior Doors (Premier Series Only)
- Flooring: Great Room - Wood Laminate (Casita Court)
- Garage: Garage Door Opener
- Garage: Garage Door Opener Wireless Keypad
- HVAC: Air Conditioner PreWire (Dedicated 220 Outlet)
- Fireplace: (Direct Vent) with Mantel and Stone Surround