

# WILLOWBROOK

# SYCAMORE PREMIER LOT 116

316 NW Par Ave. Madras, OR 97741

🏠 3 Bedrooms

🚿 2 Bathrooms

🏠 1,553 Sq. Ft.

🚗 2 Car Garage

💰 379,997

UNDER CONSTRUCTION



U - Craftsman, 2 Car



- \*\$3k Incentive (see sales agent for more details)
- Kitchen Center Island with Sink
- Kitchen Pantry
- Great Room with Gas Fireplace

- Primary Suite with Walk-in Closet
- Quartz Countertops throughout Home
- Stainless Steel Appliances
- Covered Patio

 **MonteVista Homes &  
PacWest Realty Group**

**541-234-8789**

*In a continual effort to improve our product, MonteVista Homes reserves the right to change product design, features, materials, floor plans, specifications, prices and terms without prior notice. Square footage stated or implied are approximate. Images may be representative of future home and show what's possible not what's included. Seller is a licensed real estate broker in the State of Oregon. CCB#203709*



🏠 3 Bedrooms

🚿 2 Bathrooms

🏠 1,553 Sq. Ft.

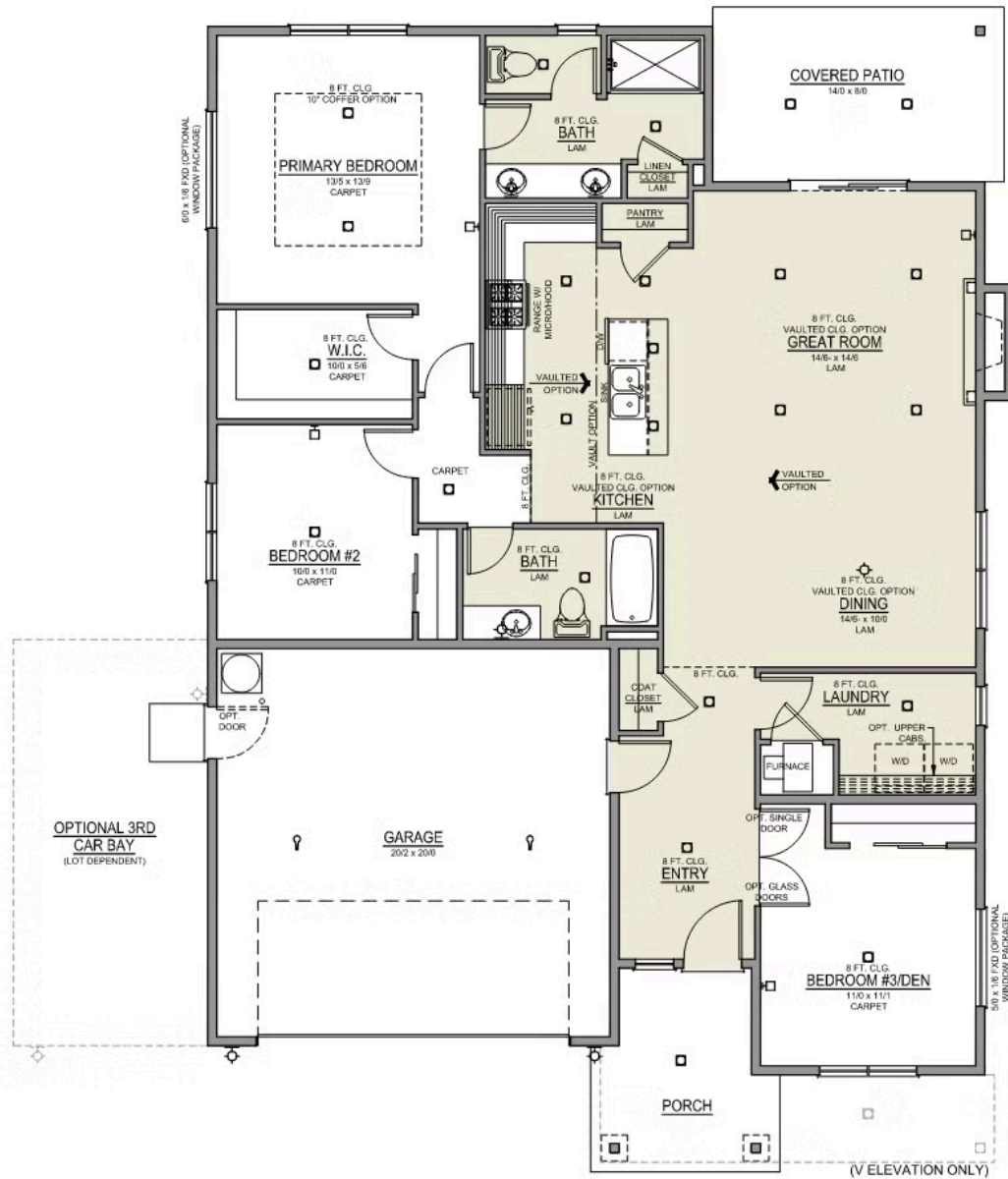
🚗 2 Car Garage

💰 379,997

## Sycamore 2-Car

1,553 Sq. Ft.

3 Bedroom, 2 Bath



 3 Bedrooms

 2 Bathrooms

 1,553 Sq. Ft.

 2 Car Garage

 379,997

- Interior Color Package: "Granite Shoreline". Painted Cabinets (All cabinets in house MUST be selected as "PAINTED")
- Exterior Color Package: Twilight Ridge
- Light Fixtures: Acadia
- Doors: Hardware Standard. "Cove" knobs / "Amador" front door handle.
- Bathroom: Upgrade finishes to BLACK - All bathrooms. Soaker Tub NOT included. (Plumbing Fixtures, bath accessories and shower door hardware)
- Shower Enclosure Glass Color Choice
- Package: Corner Lot - Includes Window trim on Corner Side, Flatwork and Corner Landscaping
- Package: Tech Package Pre Wire - Includes Panel, 110 outlet, 1 Dual Wall Plate (Coax & Ethernet) in Great Room
- Package: Optional Windows
- Vault in Great Room and Coffered Ceiling in Primary Bedroom
- Kitchen: 36" Cabinets. PAINTED Kitchen & Bathroom Cabinets.
- Cabinets: Knobs and Pulls
- Quartz Counters and Backsplash in Kitchen
- Quartz Counters and Backsplash in Guest Bath
- Quartz Counters and Backsplash in Master Bath
- Pendant Lights over Kitchen Island - In place of recessed LED
- Kitchen: Under Cabinet Lighting
- Double Doors - Premier Series - Upgrade to Full Light Glass - Interior 6-8 doors.
- Package: Optional 6/8 Interior Doors (Premier Series Only)
- Garage: Garage Door Opener
- Garage: Garage Door Opener Wireless Keypad
- Air Conditioner PreWire (Dedicated 220 Outlet)
- Fireplace (Direct Vent) with Mantel and Stone Surround
- Stone on all Front Column(s)
- Kitchen: Farm Sink - Stainless Steel Single Bowl
- Kitchen: Upgrade Faucet to Moen Arbor SRS