

Canyon Trails

Aspen Premier
LOT 70

1062 NW Walnut Ave. Redmond, OR 97756

3 Bedrooms 2 Bathrooms 1,702 Sq. Ft. 3 Car Garage 564,900

MOVE-IN READY



V - FARMHOUSE



- Quartz Countertops throughout Home
- Stainless Steel Appliances
- Kitchen Island with Sink
- Corner Kitchen Pantry

- Open Great Room with Gas Fireplace
- Primary Suite with Walk-in Closet
- Dedicated Laundry Room
- Office, Study, or School Room

MonteVista
HOMES

541-640-5225

In a continual effort to improve our product, MonteVista Homes reserves the right to change product design, features, materials, floor plans, specifications, prices and terms without prior notice. Square footage stated or implied are approximate. Images may be representative of future home and show what's possible not what's included. Seller is a licensed real estate broker in the State of Oregon. CCB#203709



Canyon Trails

Aspen Premier
LOT 70

1062 NW Walnut Ave. Redmond, OR 97756

3 Bedrooms

2 Bathrooms

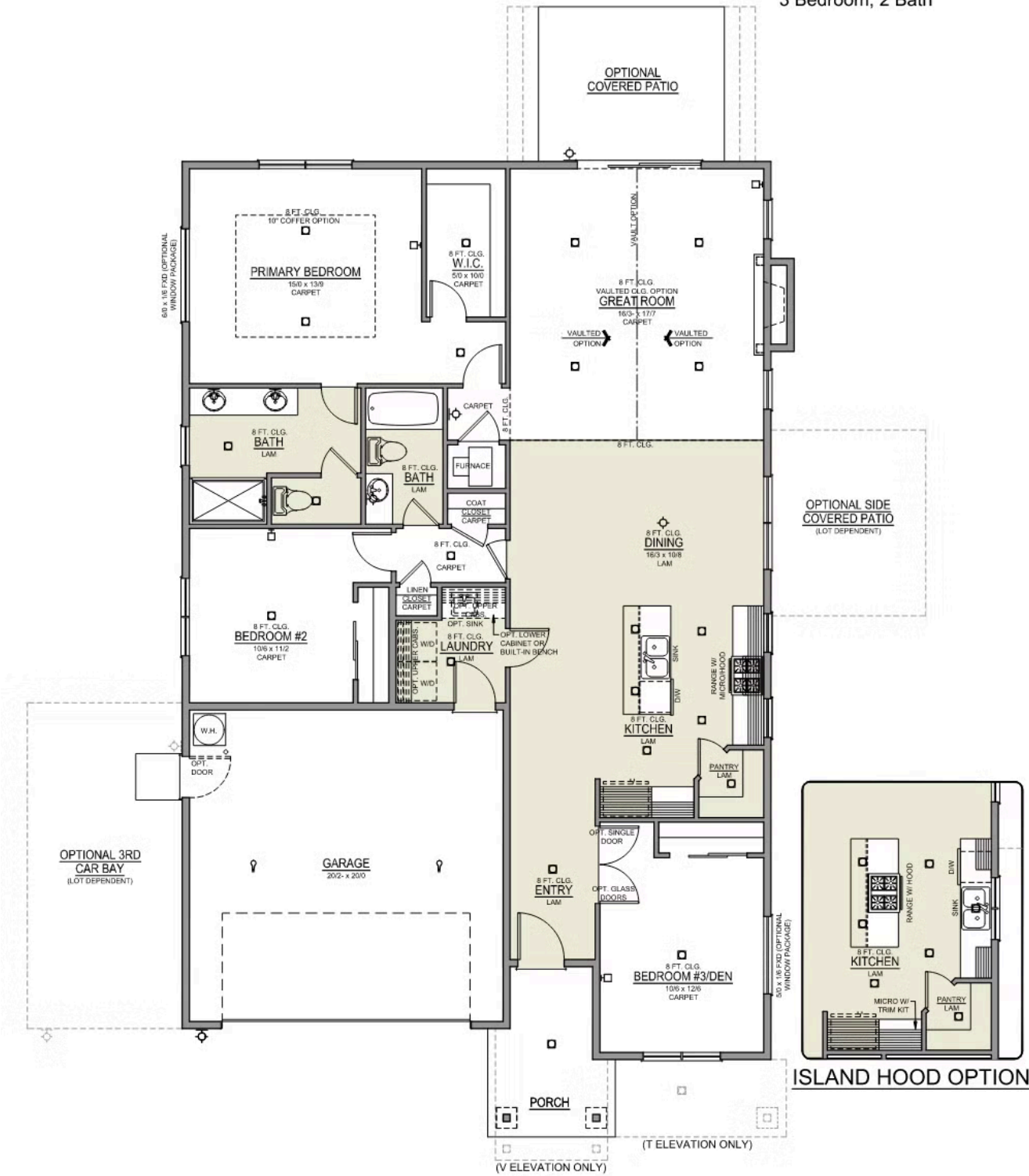
1,702 Sq. Ft.

3 Car Garage

564,900

Aspen 2-Car

1,702 Sq. Ft.
3 Bedroom, 2 Bath







Canyon Trails

OPTIONS

Aspen Premier
LOT 70

1062 NW Walnut Ave. Redmond, OR 97756

 3 Bedrooms  2 Bathrooms  1,702 Sq. Ft.  3 Car Garage  564,900

- Interior Color Package: "Crystal Heights". Painted Cabinets (All cabinets in house MUST be selected as "PAINTED")
- Exterior Color Package: Alpine Trail
- Light Fixtures: Acadia
- Doors: Hardware Standard. "Cove" knobs / "Amador" front door handle.
- Bathroom: Shower Enclosure Glass Color Choice
- Electrical Package: Tech Package Pre Wire - Includes Panel, 110 outlet, 1 Dual Wall Plate (Coax & Ethernet) in Great Room
- Garage: Premier Third Car Garage Package. Includes Man Door, 2 openers w/keypads & fully insulated garages
- Windows Package: Optional Windows
- Ceilings: Vault in Great Room and Coffered Ceiling in Primary Bedroom
- Kitchen: Island Range with Hood. 36" Cabinets. PAINTED Kitchen & Bathroom Cabinets. Sliding Window over the sink.
- Cabinets: Knobs and Pulls
- Kitchen: Full Height Backsplash
- Counters: Quartz Counters and Backsplash in Kitchen
- Counters: Quartz Counters and Backsplash in Guest Bath
- Counters: Quartz Counters and Backsplash in Master Bath
- Exterior Covered Patio: Rear - 12x10
- Carpentry: Built in Bench
- Doors Package: Add Optional 6/8 Interior Doors (Premier Series Only)
- Kitchen: Pantry Door w/ Glass (Frosted & Border)
- Flooring: Great Room - Wood Laminate (Casita Court)
- Flooring: Hallway Down - Wood Laminate (Casita Court)
- Garage: Garage Door Opener
- Garage: Garage Door Opener Wireless Keypad
- HVAC: Air Conditioner PreWire (Dedicated 220 Outlet)
- Fireplace: (Direct Vent) with Mantel and Stone Surround
- Kitchen: Farm Sink - Stainless Steel Single Bowl
- Kitchen: Upgrade Faucet to Moen Arbor SRS

MonteVista
HOMES

541-640-5225

In a continual effort to improve our product, MonteVista Homes reserves the right to change product design, features, materials, floor plans, specifications, prices and terms without prior notice. Square footage stated or implied are approximate. Images may be representative of future home and show what's possible not what's included. Seller is a licensed real estate broker in the State of Oregon. CCB#203709

