

Canyon Trails

Charity Premier
LOT 33

1156 NW Varnish Ln. Redmond, OR 97756

3 Bedrooms

2 Bathrooms

1,892 Sq. Ft.

2 Car Garage

580,392

UNDER CONSTRUCTION



V - FARMHOUSE



- Private Ensuite to 2nd Bedroom
- Spacious Single Story Layout
- Designer Kitchen Island Range Available
- Best in Show Primary Suite
- Office, Study, or School Room

- Open Great Room with Gas Fireplace
- Large Cooks Kitchen
- Quartz Countertops throughout Home
- Large Corner Kitchen Pantry

MonteVista
HOMES

541-640-5225

In a continual effort to improve our product, MonteVista Homes reserves the right to change product design, features, materials, floor plans, specifications, prices and terms without prior notice. Square footage stated or implied are approximate. Images may be representative of future home and show what's possible not what's included. Seller is a licensed real estate broker in the State of Oregon. CCB#203709



Canyon Trails

Charity Premier
LOT 33

1156 NW Varnish Ln. Redmond, OR 97756

🏠 3 Bedrooms

🚿 2 Bathrooms

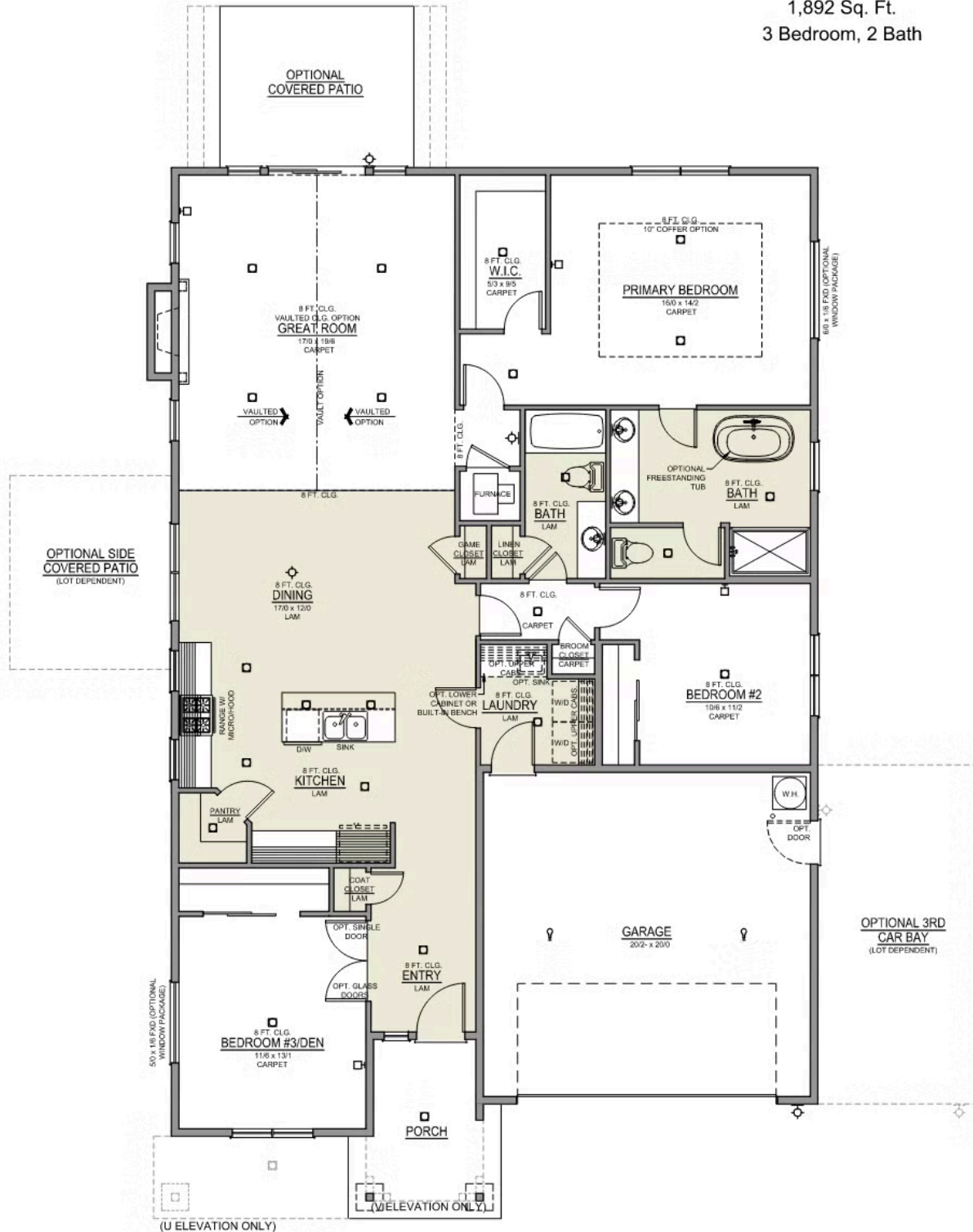
🏠 1,892 Sq. Ft.

🚗 2 Car Garage

💰 580,392

Charity 2-Car

1,892 Sq. Ft.
3 Bedroom, 2 Bath



Canyon Trails

Charity Premier
LOT 33

1156 NW Varnish Ln. Redmond, OR 97756

3 Bedrooms

2 Bathrooms

1,892 Sq. Ft.

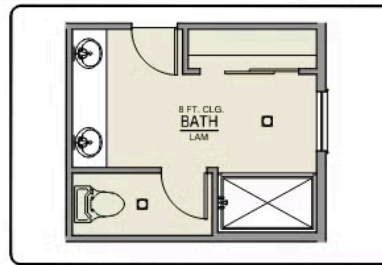
2 Car Garage

580,392

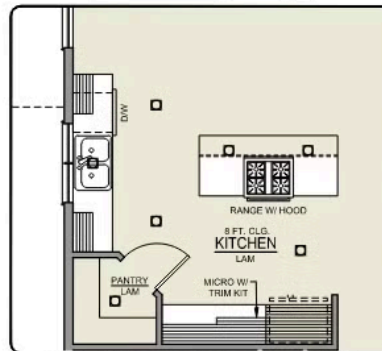
Charity 2-Car

1,892 Sq. Ft.

3 Bedroom, 2 Bath



PRIMARY BATH LINEN
CLOSET OPTION




ISLAND HOOD OPTION

 3 Bedrooms

 2 Bathrooms

 1,892 Sq. Ft.

 2 Car Garage

 580,392

- Interior Color Package: "Urban Oasis"
- Exterior Color Package: Timberline Meadows
- Light Fixtures: Acadia
- Doors: Hardware Standard. "Cove" knobs / "Amador" front door handle.
- Bathroom: Shower Enclosure(s) Glass Color Choice
- Electrical: Tech Package Pre Wire - Includes Panel, 110 outlet, 1 Dual Wall Plate (Coax & Ethernet) in Great Room
- Windows Package: Optional Windows
- Ceilings: (Premier Series Only) Vault in Great Room and Coffered Ceiling in Primary Bedroom.
- Kitchen: Island Range and Hood. 30" Cabinets. Sliding Window over the sink.
- Laundry Room: Add Lower Stained Cabs. With Quartz Top and Backsplash.
- Cabinets: Specify Color of Knobs and Pulls
- Kitchen: Full Height Backsplash
- Counters: Quartz Counters and Backsplash in Kitchen
- Counters: Quartz Counters and Backsplash in Guest Bath
- Counters: Quartz Counters and Backsplash in Primary Bath
- Bathroom: Shampoo Niche in Tile Shower. 16x22
- Bathroom: Tile Shower in Place of Fiberglass Shower. 5-ft Shower w/ Fiberglass Pan
- Exterior Covered Patio: Rear - 14x10
- Electrical: Recessed LEDs. Add 2 for 4 total+ Dimmer in Primary Bedroom.
- Electrical: Shower - Can Light
- Garage: Man Door (Exterior door from garage to outside). Includes: Exterior coach light, 6'-8" 2-Panel door, and 3'x3' concrete landing.
- Doors: Kitchen Pantry Door w/ Glass (Frosted w/ Border).
- Flooring: Hallway Down - Wood Laminate (Casita Court)
- Garage: Garage Door Opener
- Garage: Garage Door Opener Wireless Keypad
- HVAC: Air Conditioner PreWire. Dedicated 220 Outlet (For AC or MiniSplit)
- Fireplace: Gas Fireplace (Direct Vent) with Mantel and Stone Surround
- Kitchen: Farm Sink - Stainless Steel Single Bowl
REQUIRES QUARTZ COUNTERTOPS
- Kitchen or Laundry Sink: Upgrade Faucet to Moen Arbor. SPECIFY Location(s) and Color (Kitchen or Laundry, and Black or Spot Resistant Stainless).
- Bathroom: Freestanding Soaker Tub