

CANYON TRAILS

CHARLOTTE PREMIER
LOT 49

3458 NW 12th St. Redmond, OR 97756

🏠 4 Bedrooms

🚿 2 Bathrooms

🏠 1,701 Sq. Ft.

🚗 2 Car Garage

🏷️ 549,997

MOVE-IN READY



T - Traditional 2 Car



- *\$10k Incentive (see agent for details)
- Kitchen Island with a Sink
- Quartz Countertops throughout the Home

- Open Great Room with Gas Fireplace
- Kitchen Pantry
- Stainless Steel Appliances

 **MonteVista Homes &
PacWest Realty Group**

541-640-5225

In a continual effort to improve our product, MonteVista Homes reserves the right to change product design, features, materials, floor plans, specifications, prices and terms without prior notice. Square footage stated or implied are approximate. Images may be representative of future home and show what's possible not what's included. Seller is a licensed real estate broker in the State of Oregon. CCB#203709



CANYON TRAILS

CHARLOTTE PREMIER LOT 49

3458 NW 12th St. Redmond, OR 97756

4 Bedrooms

2 Bathrooms

1,701 Sq. Ft.

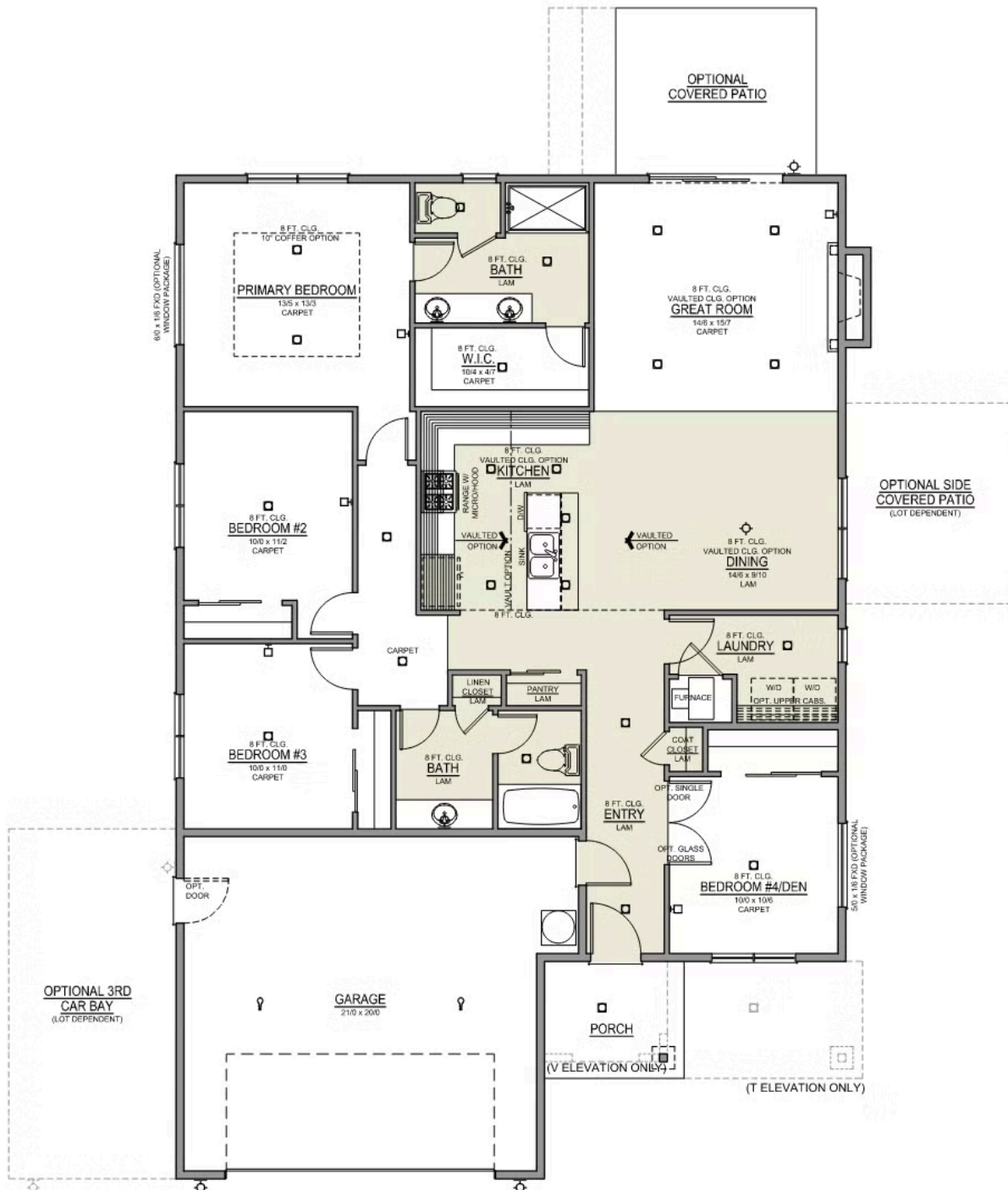
2 Car Garage

549,997

Charlotte 2-Car

1,701 Sq. Ft.

4 Bedroom, 2 Bath



CANYON TRAILS

OPTIONS

CHARLOTTE PREMIER

LOT 49

3458 NW 12th St. Redmond, OR 97756

 4 Bedrooms

 2 Bathrooms

 1,701 Sq. Ft.

 2 Car Garage

 549,997

- Interior Color Package: "Haven Valley". Painted Cabinets (All cabinets in house MUST be selected as "PAINTED")
- Exterior Color Package: Cascade Falls
- Light Fixtures: Acadia
- Doors: Hardware Standard. "Cove" knobs / "Amador" front door handle.
- Bathroom: Shower Enclosure Glass Color Choice
- Electrical Package: Tech Package Pre Wire - Includes Panel, 110 outlet, 1 Dual Wall Plate (Coax & Ethernet) in Great Room
- Windows Package: Optional Windows
- Ceilings: Vault in Great Room and Coffered Ceiling in Primary Bedroom
- Kitchen: 36" Cabinets. PAINTED Kitchen & Bathroom Cabinets.
- Cabinets: Knobs and Pulls
- Exterior: Concrete Flatwork (Broom Finished)
- Counters: Quartz Counters and Backsplash in Kitchen
- Counters: Quartz Counters and Backsplash in Guest Bath
- Counters: Quartz Counters and Backsplash in Master Bath
- Electrical: Recessed LEDs. Add 2 for 4 total+ Dimmer in Primary Bedroom.
- Doors Package: Add Optional 6/8 Interior Doors (Premier Series Only)
- Flooring: Great Room - Wood Laminate (Casita Court)
- Flooring: Hallway Down - Wood Laminate (Casita Court)
- Garage: Garage Door Opener
- Garage: Garage Door Opener Wireless Keypad
- HVAC: Air Conditioner PreWire (Dedicated 220 Outlet)
- Fireplace: (Direct Vent) with Mantel and Stone Surround
- Exterior: Stone on all Front Column(s)
- Exterior: Stone Garage Wing Wall
- Kitchen: Farm Sink - Stainless Steel Single Bowl
- Kitchen: Upgrade Faucet to Moen Arbor SRS



541-640-5225

In a continual effort to improve our product, MonteVista Homes reserves the right to change product design, features, materials, floor plans, specifications, prices and terms without prior notice. Square footage stated or implied are approximate. Images may be representative of future home and show what's possible not what's included. Seller is a licensed real estate broker in the State of Oregon.
CCB#203709

