

CANYON TRAILS

DOUGLAS PREMIER
LOT 73

1100 NW Walnut Ave. Redmond, OR 97756

🏠 4 Bedrooms

🚿 3 Bathrooms

🏠 2,427 Sq. Ft.

🚗 2 Car Garage

💰 619,900

UNDER CONSTRUCTION



U - Craftsman



- *\$10k Incentive (see agent for details)
- 9 Foot Ceilings throughout the Main Level
- Open Concept Living with Gas Fireplace
- Kitchen Island with a Sink
- Kitchen Pantry

- Upstairs Bonus Room / Loft
- Main Level Guest Suite / Den
- Quartz Countertops throughout the Home
- Stainless Steel Appliances

 **MonteVista Homes &
PacWest Realty Group**

541-640-5225

In a continual effort to improve our product, MonteVista Homes reserves the right to change product design, features, materials, floor plans, specifications, prices and terms without prior notice. Square footage stated or implied are approximate. Images may be representative of future home and show what's possible not what's included. Seller is a licensed real estate broker in the State of Oregon. CCB#203709



CANYON TRAILS

DOUGLAS PREMIER LOT 73

1100 NW Walnut Ave. Redmond, OR 97756

4 Bedrooms

3 Bathrooms

2,427 Sq. Ft.

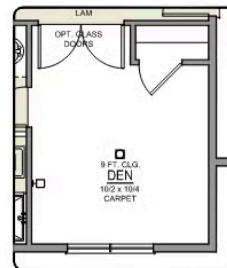
2 Car Garage

619,900

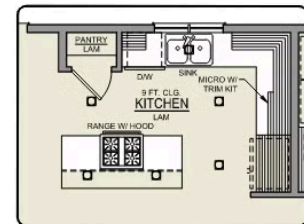
Douglas 2-Car
2,427 Sq. Ft.
4 Bedroom, 3 Bath



MAIN FLOOR



DEN OPTION



ISLAND HOOD OPTION

CANYON TRAILS

DOUGLAS PREMIER LOT 73

1100 NW Walnut Ave. Redmond, OR 97756

🏠 4 Bedrooms

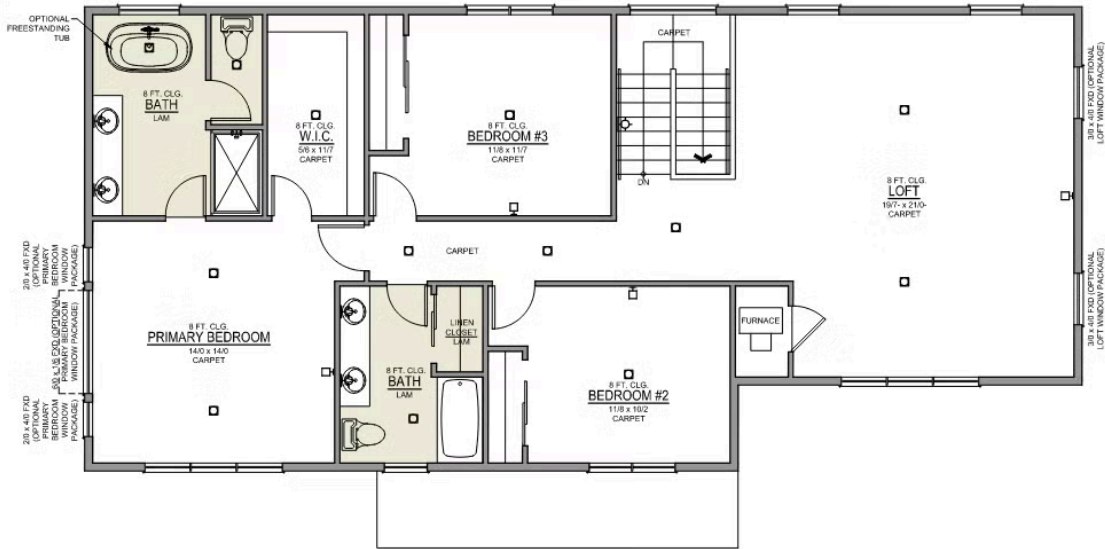
🚿 3 Bathrooms

🏠 2,427 Sq. Ft.

🚗 2 Car Garage

💰 619,900

Douglas 2-Car
2,427 Sq. Ft.
4 Bedroom, 3 Bath



UPPER FLOOR



PRIMARY BATH LINEN
CLOSET OPTION

 4 Bedrooms

 3 Bathrooms

 2,427 Sq. Ft.

 2 Car Garage

 619,900

- Interior Color Package: "Granite Shoreline". Painted Cabinets (All cabinets in house MUST be selected as "PAINTED")
- Exterior Color Package: Twilight Ridge
- Light Fixtures: Acadia
- Doors: Hardware Standard. "Cove" knobs / "Amador" front door handle.
- Bathroom: Shower Enclosure Glass Color Choice
- Electrical Package: Tech Package Pre Wire - Includes Panel, 110 outlet, 1 Dual Wall Plate (Coax & Ethernet) in Great Room
- Windows Package: Optional Windows
- Kitchen: Island Range with Hood. 36" Cabinets. PAINTED Kitchen & Bathroom Cabinets. Sliding Window over the sink.
- Bathroom: Replace Pedestal Sink with Lower Cabinet - PAINTED. Includes Quartz Counter Top & Backsplash
- Cabinets: Knobs and Pulls
- Exterior: RV Parking 12' x 20' using 6" Cement Pad. Includes additional SF of driveway . Does not include widened approach.
- Counters: Quartz Counters and Backsplash in Kitchen
- Counters: Quartz Counters and Backsplash in Guest Bath
- Counters: Quartz Counters and Backsplash in Master Bath
- Bathroom: Shampoo Niche in Tile Shower. 16x22
- Bathroom: Tile Shower in Place of Fiberglass Shower. 5-ft Shower w/ Fiberglass Pan
- Exterior Covered Patio: Rear - 12x10
- Electrical: Recessed LEDs. Add 2 for 4 total+ Dimmer in Primary Bedroom.
- Electrical: Recessed LEDs. Add 2 for 4 total + Dimmer in Bonus Room or Loft
- Doors: Exterior Front Door. CRAFTSMAN 6-8. Clear Glass (Premier Series Only)
- Doors Package: Add Optional 6/8 Interior Doors (Premier Series Only)
- Garage: Garage Door Opener
- Garage: Garage Door Opener Wireless Keypad
- HVAC: Air Conditioner PreWire (Dedicated 220 Outlet)
- Fireplace: (Direct Vent) with Mantel and Stone Surround
- Exterior: Stone on all Front Column(s)
- Kitchen: Upgrade Faucet to Moen Arbor SRS
- Bathroom: Freestanding Soaker Tub