

# CANYON TRAILS

DOUGLAS PREMIER  
LOT 62

3422 NW 11th Ct. Redmond, OR 97756

🏠 4 Bedrooms

🚿 3 Bathrooms

🏠 2,427 Sq. Ft.

🚗 2 Car Garage

💰 599,997

UNDER CONSTRUCTION



U - Craftsman



- \*\$25k Incentive if the home closes by 12/15/24
- 9 Foot Ceilings throughout Main Level
- Open Concept Living with Gas Fireplace
- Kitchen Island with Sink
- Kitchen Pantry

- Upstairs Bonus Room / Loft
- Main Level Guest Suite / Den
- Quartz Countertops throughout Home
- Stainless Steel Appliances

 **MonteVista Homes &  
PacWest Realty Group**

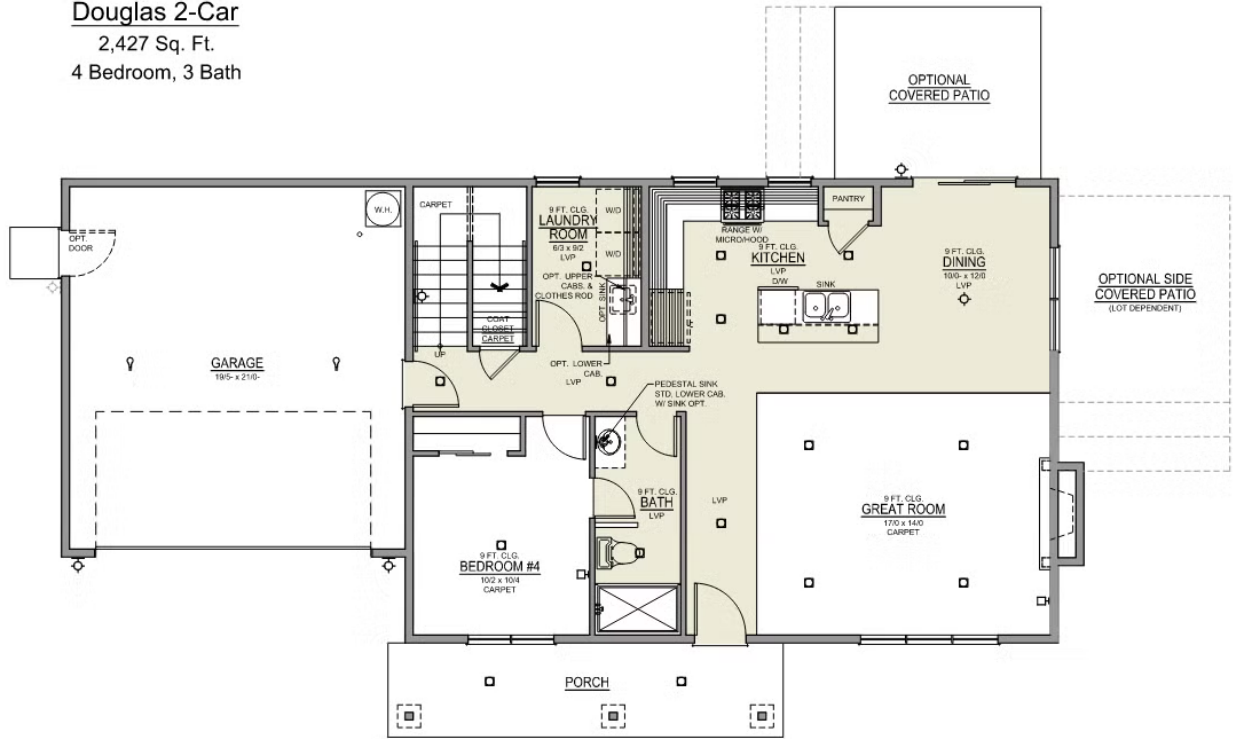
**541-640-5225**

*In a continual effort to improve our product, MonteVista Homes reserves the right to change product design, features, materials, floor plans, specifications, prices and terms without prior notice. Square footage stated or implied are approximate. Images may be representative of future home and show what's possible not what's included. Seller is a licensed real estate broker in the State of Oregon. CCB#203709*



4 Bedrooms   3 Bathrooms   2,427 Sq. Ft.   2 Car Garage   599,997

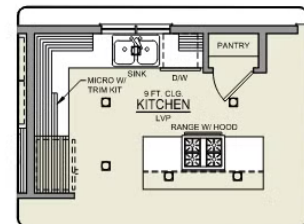
Douglas 2-Car  
2,427 Sq. Ft.  
4 Bedroom, 3 Bath



## MAIN FLOOR



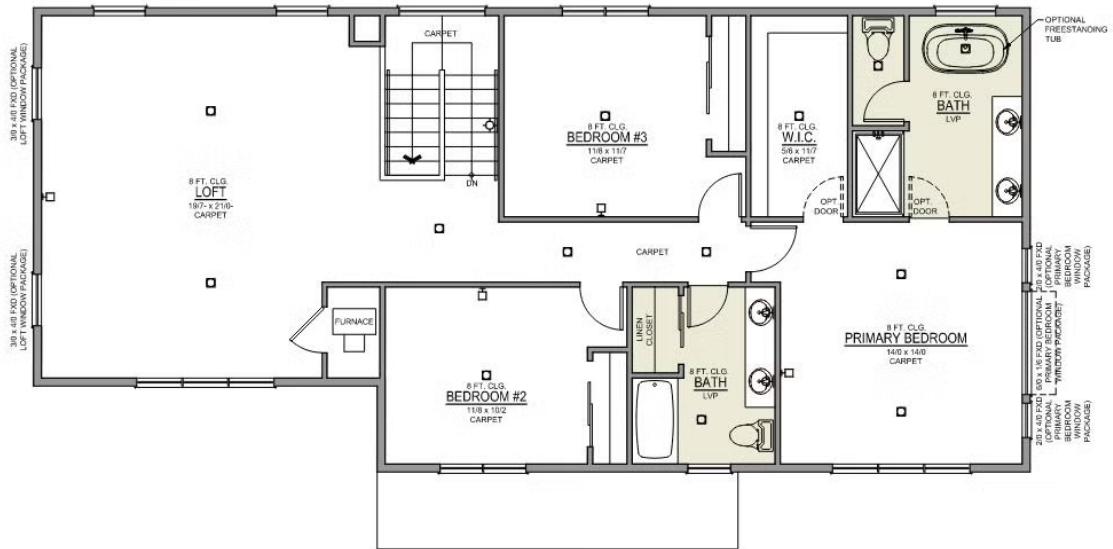
DEN OPTION



ISLAND HOOD OPTION

🏠 4 Bedrooms    🚿 3 Bathrooms    🏠 2,427 Sq. Ft.    🚗 2 Car Garage    💰 599,997

Douglas 2-Car  
2,427 Sq. Ft.  
4 Bedroom, 3 Bath



## UPPER FLOOR



**PRIMARY BATH LINEN  
CLOSET OPTION**

 4 Bedrooms

 3 Bathrooms

 2,427 Sq. Ft.

 2 Car Garage

 599,997

- Interior Color Package: "Mountain Vogue". Painted Cabinets (All cabinets in house MUST be selected as "PAINTED")
- Exterior Color Package: Cascade Falls
- Light Fixtures: Acadia
- Doors: Hardware Standard. "Cove" knobs / "Amador" front door handle.
- Shower Enclosure Glass Color Choice
- Package: Tech Package Pre Wire - Includes Panel, 110 outlet, 1 Dual Wall Plate (Coax & Ethernet) in Great Room
- Package: Optional Windows
- Cabinets: Knobs and Pulls
- Concrete Flatwork Broom Finished
- Quartz Counters and Backsplash in Kitchen
- Quartz Counters and Backsplash in Guest Bath
- Quartz Counters and Backsplash in Master Bath
- Pendant Lights over Kitchen Island - In place of recessed LED
- Recessed LED: Add 2 for 4 total+ Dimmer in Primary Bedroom.
- Recessed LED: Add 2 for 4 total + Dimmer in Bonus Room or Loft
- Built in Bench
- Package: Optional 6/8 Interior Doors
- LVP Flooring: Great Room
- Garage: Garage Door Opener
- Garage: Garage Door Opener Wireless Keypad
- Air Conditioner PreWire (Dedicated 220 Outlet)
- Fireplace (Direct Vent) with Mantel and Stone Surround
- Stone on all Front Column(s)
- Faucet: Moen Arbor SRS
- Freestanding Soaker Tub