

CANYON TRAILS

HOPE PREMIER
LOT 75

1166 NW Walnut Ave. Redmond, OR 97756

🏠 4 Bedrooms

🚿 2 Bathrooms

🏠 1,906 Sq. Ft.

🚗 3 Car Garage

💰 569,900

UNDER CONSTRUCTION



U - Craftsman



- *\$10k Incentive (see agent for details)
- Kitchen Island with a Sink
- Kitchen Pantry

- Great Room with Gas Fireplace
- Quartz Countertops throughout the Home
- Stainless Steel Appliances

 **MonteVista Homes &
PacWest Realty Group**

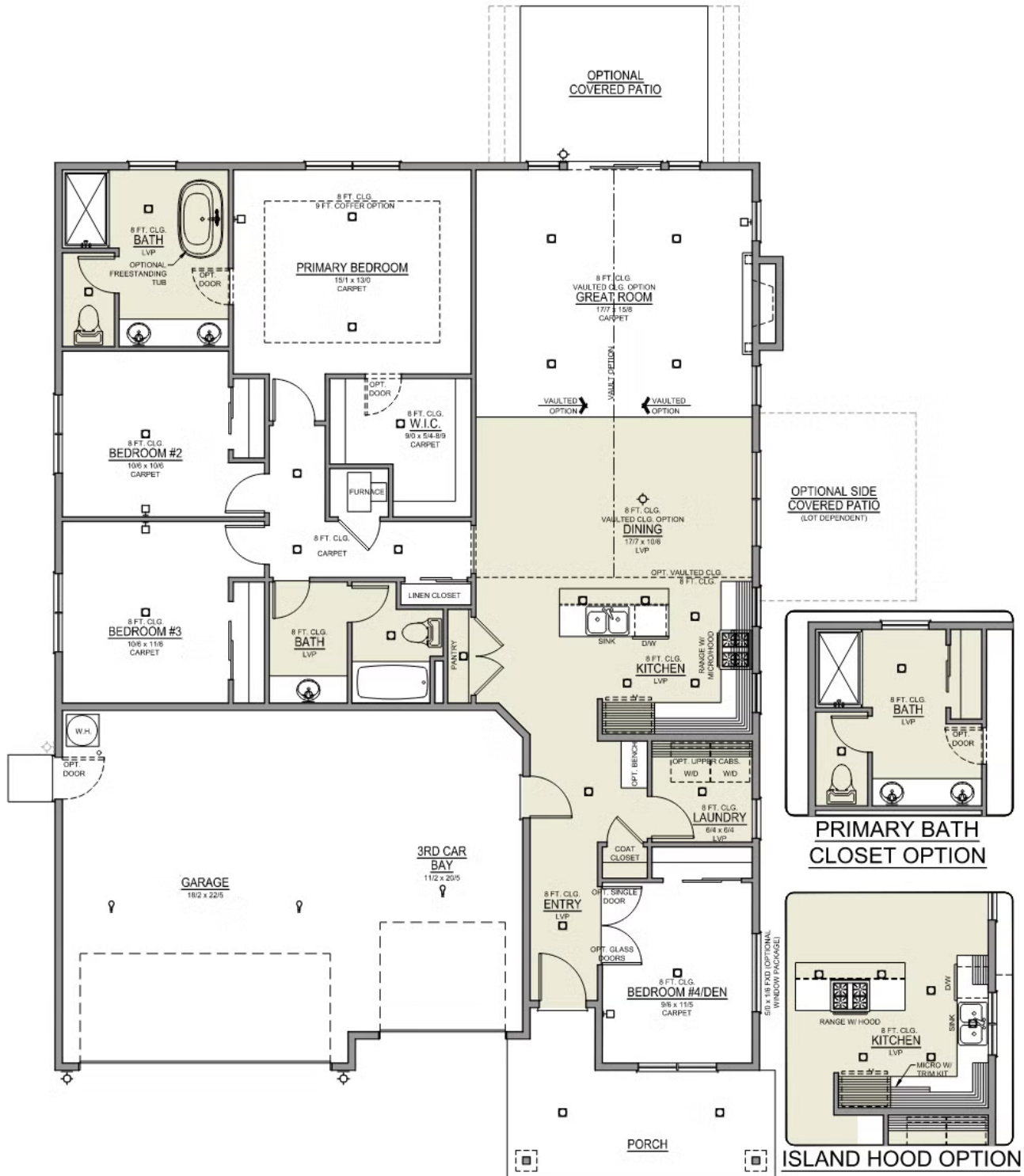
541-640-5225

In a continual effort to improve our product, MonteVista Homes reserves the right to change product design, features, materials, floor plans, specifications, prices and terms without prior notice. Square footage stated or implied are approximate. Images may be representative of future home and show what's possible not what's included. Seller is a licensed real estate broker in the State of Oregon. CCB#203709



🏠 4 Bedrooms 🚿 2 Bathrooms 🏠 1,906 Sq. Ft. 🚗 3 Car Garage 💰 569,900

Hope 3-Car
1,906 Sq. Ft.
4 Bedroom, 2 Bath



 4 Bedrooms

 2 Bathrooms

 1,906 Sq. Ft.

 3 Car Garage

 569,900

- Interior Color Package: "Horizon Pine"
- Exterior Color Package: Cascade Falls
- Light Fixtures: Acadia
- Doors: Hardware Standard. "Cove" knobs / "Amador" front door handle.
- Bathroom: Upgrade finishes to BLACK - All bathrooms. Soaker Tub INCLUDED. (Plumbing Fixtures, bath accessories and shower door hardware)
- Bathroom: Shower Enclosure Glass Color Choice
- Electrical Package: Tech Package Pre Wire - Includes Panel, 110 outlet, 1 Dual Wall Plate (Coax & Ethernet) in Great Room
- Windows Package: Optional Windows
- Ceilings: Vault in Great Room and Coffered Ceiling in Primary Bedroom
- Kitchen: Island Range with Hood. 36" Cabinets. Sliding Window over the sink.
- Laundry Room: Upper Cabinets: 36"
- Cabinets: Knobs and Pulls
- Counters: Quartz Counters and Backsplash in Kitchen
- Counters: Quartz Counters and Backsplash in Guest Bath
- Counters: Quartz Counters and Backsplash in Master Bath
- Exterior Covered Patio: Rear - 12x10
- Electrical: Recessed LEDs. Add 2 for 4 total+ Dimmer in Primary Bedroom.
- Carpentry: Built in Bench
- Doors: Interior Double Doors Upgrade to Full Light Glass Double Doors. 6-8 doors (Premier Series Only).
- Doors Package: Add Optional 6/8 Interior Doors (Premier Series Only)
- Flooring: Hallway Down - Wood Laminate (Casita Court)
- Garage: Garage Door Opener
- HVAC: Air Conditioner PreWire (Dedicated 220 Outlet)
- Fireplace: (Direct Vent) with Mantel and Stone Surround
- Kitchen: Upgrade Faucet to Moen Arbor SRS
- Bathroom: Freestanding Soaker Tub