

Canyon Trails

Jefferson Premier
LOT 34

1178 NW Varnish Ln. Redmond, OR 97756

🏠 4 Bedrooms

🚿 2.5 Bathrooms

📏 1,761 Sq. Ft.

🚗 2 Car Garage

🏷️ 531,801

UNDER CONSTRUCTION



V - FARMHOUSE



- Bedroom or Den on Main Level
- 9 Foot Ceilings throughout Main Level
- Kitchen Island with Sink
- Kitchen Pantry

- Open Great Room with Gas Fireplace
- Primary Suite with Walk-in Closet
- Quartz Countertops throughout Home
- Stainless Steel Appliances

MonteVista
HOMES

541-640-5225

In a continual effort to improve our product, MonteVista Homes reserves the right to change product design, features, materials, floor plans, specifications, prices and terms without prior notice. Square footage stated or implied are approximate. Images may be representative of future home and show what's possible not what's included. Seller is a licensed real estate broker in the State of Oregon. CCB#203709



Canyon Trails

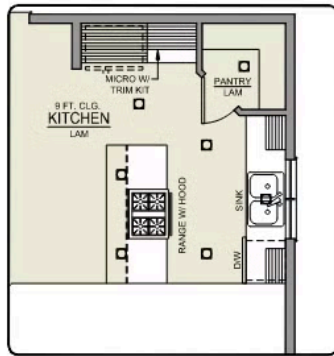
Jefferson Premier LOT 34

1178 NW Varnish Ln. Redmond, OR 97756

4 Bedrooms 2.5 Bathrooms 1,761 Sq. Ft. 2 Car Garage 531,801

Jefferson 2-Car

1,761 Sq. Ft.
4 Bedroom, 2.5 Bath



ISLAND HOOD OPTION



BATHROOM OPTION



MAIN FLOOR

Canyon Trails

Jefferson Premier
LOT 34

1178 NW Varnish Ln. Redmond, OR 97756

🛏 4 Bedrooms

🚿 2.5 Bathrooms

🏠 1,761 Sq. Ft.

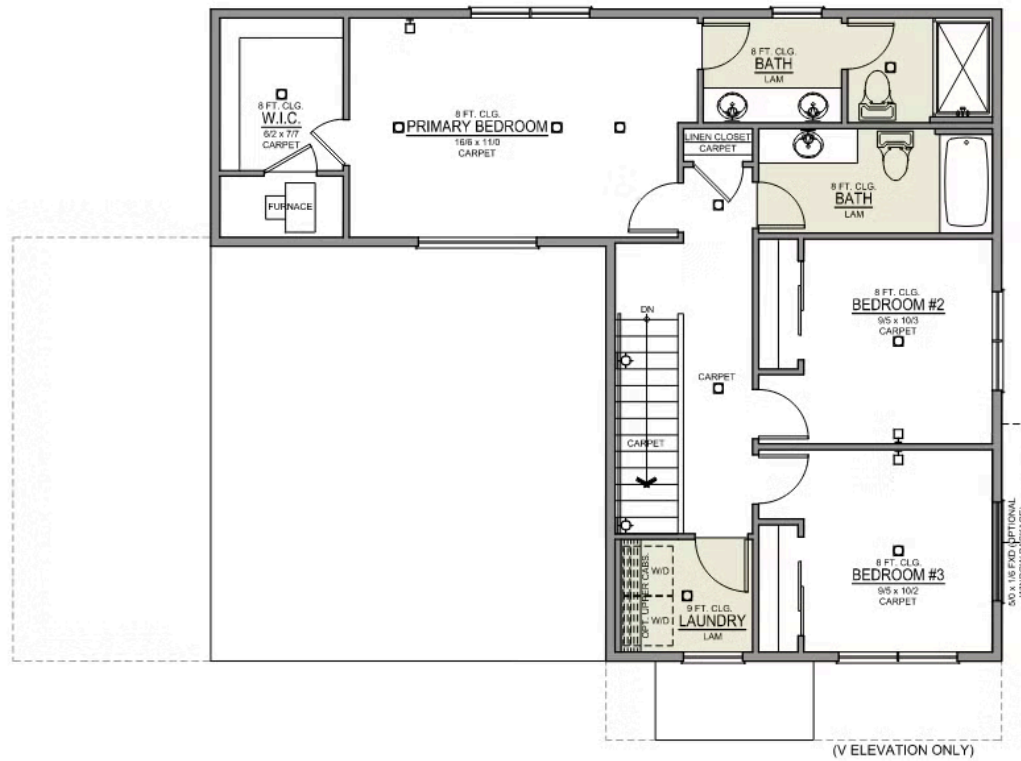
🚗 2 Car Garage

🏠 531,801

Jefferson 2-Car

1,761 Sq. Ft.

4 Bedroom, 2.5 Bath



UPPER FLOOR

Canyon Trails

OPTIONS

Jefferson Premier
LOT 34

1178 NW Varnish Ln. Redmond, OR 97756

 4 Bedrooms

 2.5 Bathrooms

 1,761 Sq. Ft.

 2 Car Garage

 531,801

- Interior Color Package: "Crystal Heights". Painted Cabinets (All cabinets in house MUST be selected as "PAINTED")
- Exterior Color Package: Rustic Woods
- Light Fixtures: Acadia
- Doors: Hardware Standard. "Cove" knobs / "Amador" front door handle.
- Bathroom: Upgraded finishes in BLACK. Soaker Tub NOT included. All bathrooms. (Plumbing Fixtures, bath accessories and shower door hardware)
- Bathroom: Shower Enclosure(s) Glass Color Choice
- Electrical: Tech Package Pre Wire - Includes Panel, 110 outlet, 1 Dual Wall Plate (Coax & Ethernet) in Great Room
- Windows Package: Optional Windows
- Kitchen: Island Range and Hood. 30" Cabinets. PAINTED Kitchen & Bathroom Cabinets. Sliding Window over the sink.
- Laundry Room: Add Upper PAINTED 36" Cabinets above Washer/Dryer.
- Bathroom: Replace Pedestal Sink with Lower Cabinet - PAINTED. Includes Quartz Counter Top & Backsplash
- Cabinets: Specify Color of Knobs and Pulls
- Kitchen: Full Height Backsplash
- Counters: Quartz Counters and Backsplash in Kitchen
- Counters: Quartz Counters and Backsplash in Guest Bath
- Counters: Quartz Counters and Backsplash in Primary Bath
- Bathroom: JEFFERSON only - Add 5' Fiberglass Walk-In Shower to downstairs Powder Room.
- Kitchen: Pendant Lights over Kitchen Island - In place of recessed LED
- Electrical: Recessed LEDs. Add 2 for 4 total+ Dimmer in Primary Bedroom.
- Doors: Kitchen Pantry Door w/ Glass (Frosted w/ Border).
- Garage: Garage Door Opener
- Garage: Garage Door Opener Wireless Keypad
- HVAC: Air Conditioner PreWire. Dedicated 220 Outlet (For AC or MiniSplit)
- Fireplace: Gas Fireplace (Direct Vent) with Mantel and Stone Surround
- Kitchen: Farm Sink - Stainless Steel Single Bowl ****REQUIRES QUARTZ COUNTERTOPS****
- Kitchen or Laundry Sink: Upgrade Faucet to Moen Arbor. SPECIFY Location(s) and Color (Kitchen or Laundry, and Black or Spot Resistant Stainless).

MonteVista
HOMES

541-640-5225

In a continual effort to improve our product, MonteVista Homes reserves the right to change product design, features, materials, floor plans, specifications, prices and terms without prior notice. Square footage stated or implied are approximate. Images may be representative of future home and show what's possible not what's included. Seller is a licensed real estate broker in the State of Oregon. CCB#203709

