

Premier Collection

MIRANDA PREMIER

CANYON TRAILS

 4 Bedrooms

 3 Bathrooms

 2,517 Sq. Ft.

 2 Car Garage



T - Traditional



V - Farmhouse



- 9 Foot Ceilings throughout Main Level
- Kitchen Island with Sink
- Kitchen Pantry
- Upstairs Bonus Room / Loft

- Open Great Room with Gas Fireplace
- Primary Suite with Walk-in Closet
- Quartz Countertops throughout Home
- Stainless Steel Appliances

 **MonteVista Homes &
PacWest Realty Group**

541-640-5225

In a continual effort to improve our product, MonteVista Homes reserves the right to change product design, features, materials, floor plans, specifications, prices and terms without prior notice. Square footage stated or implied are approximate. Images may be representative of future home and show what's possible not what's included. Seller is a licensed real estate broker in the State of Oregon. CCB#203709



MIRANDA PREMIER

CANYON TRAILS

4 Bedrooms

3 Bathrooms

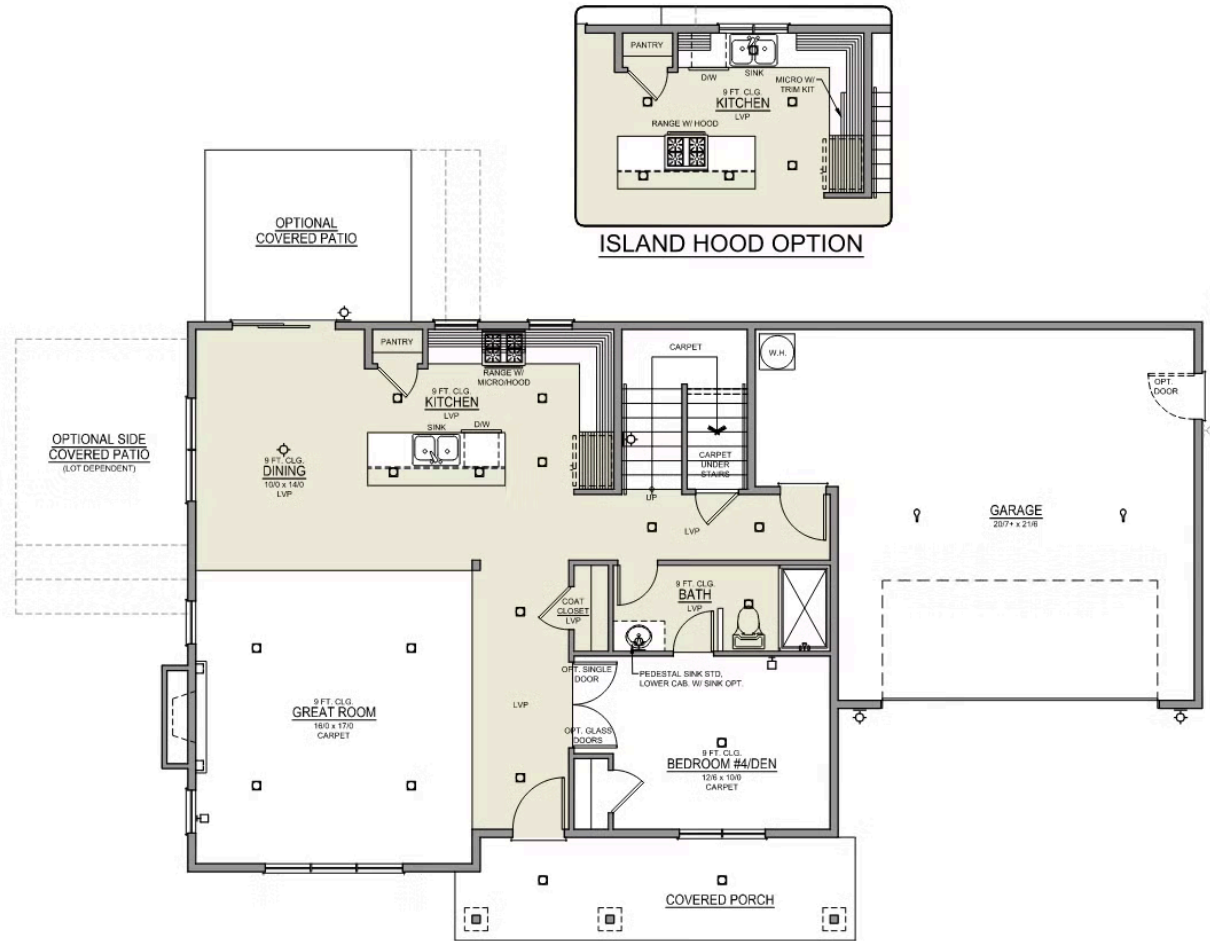
2,517 Sq. Ft.

2 Car Garage

Miranda 2-Car

2,517 Sq. Ft.

4 Bedroom, 3 Bath



MAIN FLOOR

MIRANDA PREMIER

CANYON TRAILS

 4 Bedrooms

 3 Bathrooms

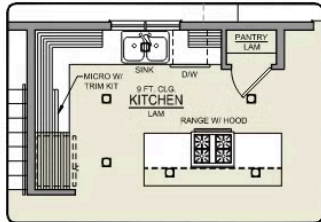
 2,517 Sq. Ft.

 2 Car Garage

Miranda 2-Car

2,517 Sq. Ft.

4 Bedroom, 3 Bath



ISLAND HOOD OPTION



MAIN FLOOR

MIRANDA PREMIER

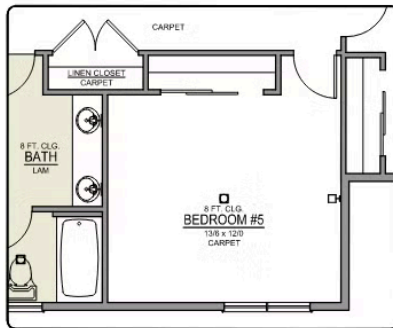
CANYON TRAILS

 4 Bedrooms

 3 Bathrooms

 2,517 Sq. Ft.

 2 Car Garage

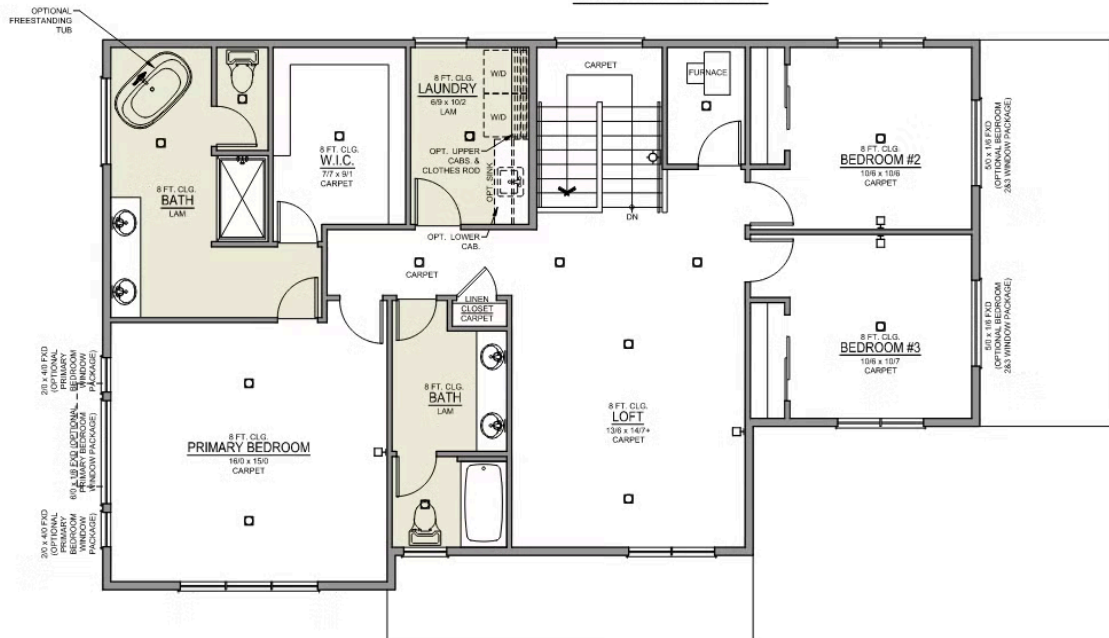


BEDROOM #5 OPTION



PRIMARY BATH CLOSET OPTION

Miranda 2-Car
2,517 Sq. Ft.
4 Bedroom, 3 Bath



UPPER FLOOR