

CANYON TRAILS

SYCAMORE PREMIER LOT 71

1074 NW Walnut Ave. Redmond, OR 97756

🏠 3 Bedrooms

🚿 2 Bathrooms

🏠 1,553 Sq. Ft.

🚗 2 Car Garage

🏷️ 519,997

UNDER CONSTRUCTION



T - Traditional, 2 Car



- Kitchen Center Island with Sink
- Kitchen Pantry
- Open Great Room with Gas Fireplace
- Primary Suite with Walk-in Closet

- Quartz Countertops throughout Home
- Stainless Steel Appliances
- Covered Patio

 **MonteVista Homes &
PacWest Realty Group**

541-640-5225

In a continual effort to improve our product, MonteVista Homes reserves the right to change product design, features, materials, floor plans, specifications, prices and terms without prior notice. Square footage stated or implied are approximate. Images may be representative of future home and show what's possible not what's included. Seller is a licensed real estate broker in the State of Oregon. CCB#203709



CANYON TRAILS

SYCAMORE PREMIER LOT 71

1074 NW Walnut Ave. Redmond, OR 97756

🏠 3 Bedrooms

🚿 2 Bathrooms

🏠 1,553 Sq. Ft.

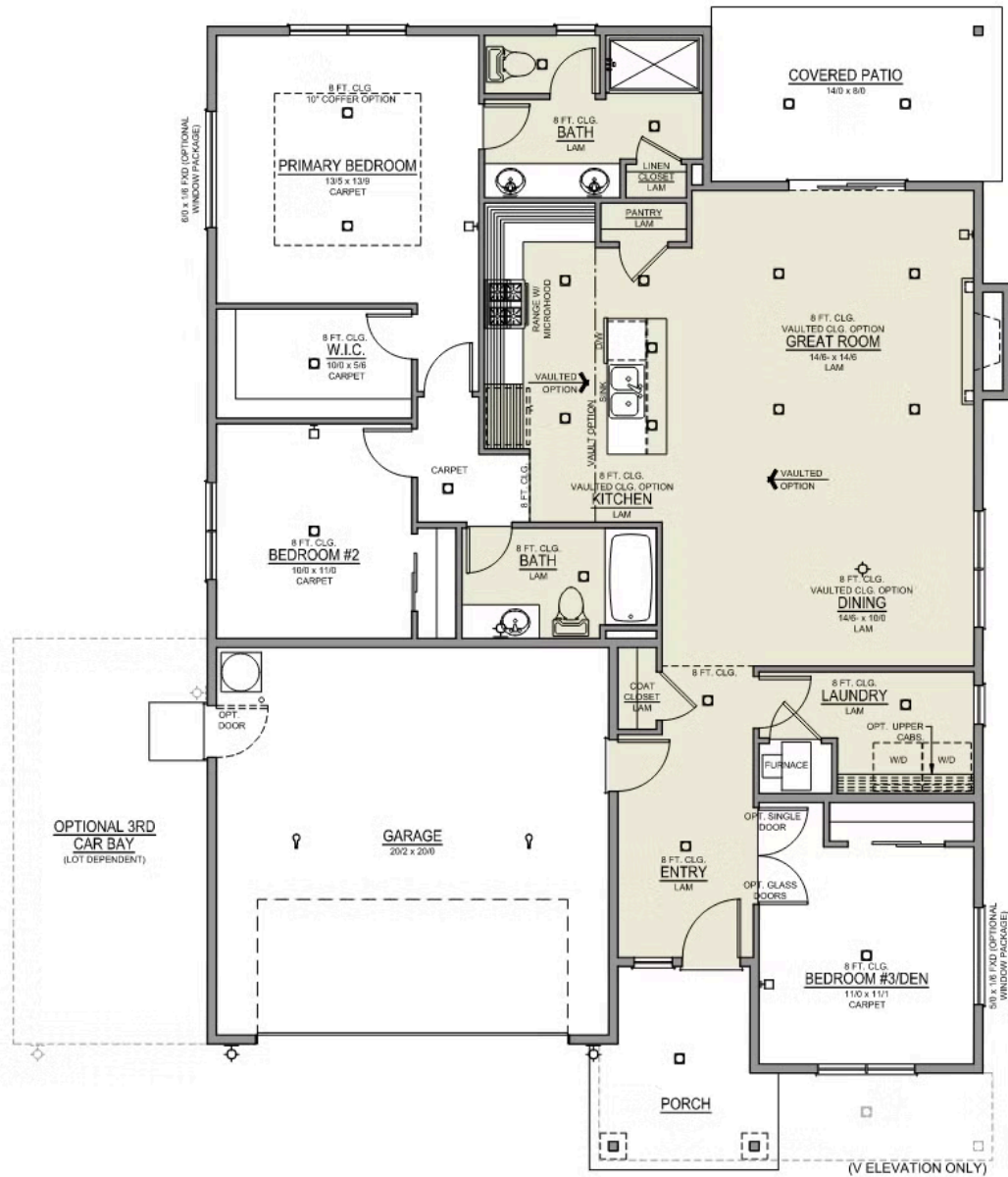
🚗 2 Car Garage

💰 519,997

Sycamore 2-Car

1,553 Sq. Ft.

3 Bedroom, 2 Bath



 3 Bedrooms

 2 Bathrooms

 1,553 Sq. Ft.

 2 Car Garage

 519,997

- Interior Color Package: "Urban Oasis"
- Exterior Color Package: Spring Mist
- Light Fixtures: Acadia
- Doors: Hardware Standard. "Cove" knobs / "Amador" front door handle.
- Bathroom: Upgrade finishes to BLACK. Soaker Tub NOT included. All bathrooms. (Plumbing Fixtures, bath accessories and shower door hardware)
- Bathroom: Shower Enclosure Glass Color Choice
- Electrical Package: Tech Package Pre Wire - Includes Panel, 110 outlet, 1 Dual Wall Plate (Coax & Ethernet) in Great Room
- Windows Package: Optional Windows
- Ceilings: Vault in Great Room and Coffered Ceiling in Primary Bedroom
- Cabinets: Knobs and Pulls
- Exterior: RV Parking 12' x 20' using 6" Cement Pad. Includes additional SF of driveway . Does not include widened approach.
- Counters: Quartz Counters and Backsplash in Kitchen
- Counters: Quartz Counters and Backsplash in Guest Bath
- Counters: Quartz Counters and Backsplash in Master Bath
- Electrical: Recessed LEDs. Add 2 for 4 total+ Dimmer in Primary Bedroom.
- Doors Package: Add Optional 6/8 Interior Doors (Premier Series Only)
- Garage: Garage Door Opener
- Garage: Garage Door Opener Wireless Keypad
- HVAC: Air Conditioner PreWire (Dedicated 220 Outlet)
- Fireplace: (Direct Vent) with Mantel and Stone Surround
- Exterior: Stone on all Front Column(s)
- Kitchen: Farm Sink - Stainless Steel Single Bowl
- Kitchen: Upgrade Faucet to Moen Arbor SRS