

Premier Collection

# THIELSEN PREMIER

CANYON TRAILS

 4 Bedrooms

 2.5 Bathrooms

 2,373 Sq. Ft.

 2 Car Garage



U - Craftsman, 2 Car



V - Farmhouse, 2 Car



T - Traditional, 3 Car



- Primary Suite on Main Level
- Walk-in Closet in Primary Suite
- Open Great Room with Gas Fireplace
- Large Upstairs Bonus Room / Loft
- Kitchen Island

- Kitchen Pantry
- 9 Foot Ceilings throughout Main Level
- Quartz Countertops throughout Home
- Stainless Steel Appliances
- Covered Front Porch and Patio

 **MonteVista Homes &  
PacWest Realty Group**

**541-640-5225**

*In a continual effort to improve our product, MonteVista Homes reserves the right to change product design, features, materials, floor plans, specifications, prices and terms without prior notice. Square footage stated or implied are approximate. Images may be representative of future home and show what's possible not what's included. Seller is a licensed real estate broker in the State of Oregon. CCB#203709*



# THIELSEN PREMIER

## CANYON TRAILS

4 Bedrooms

2.5 Bathrooms

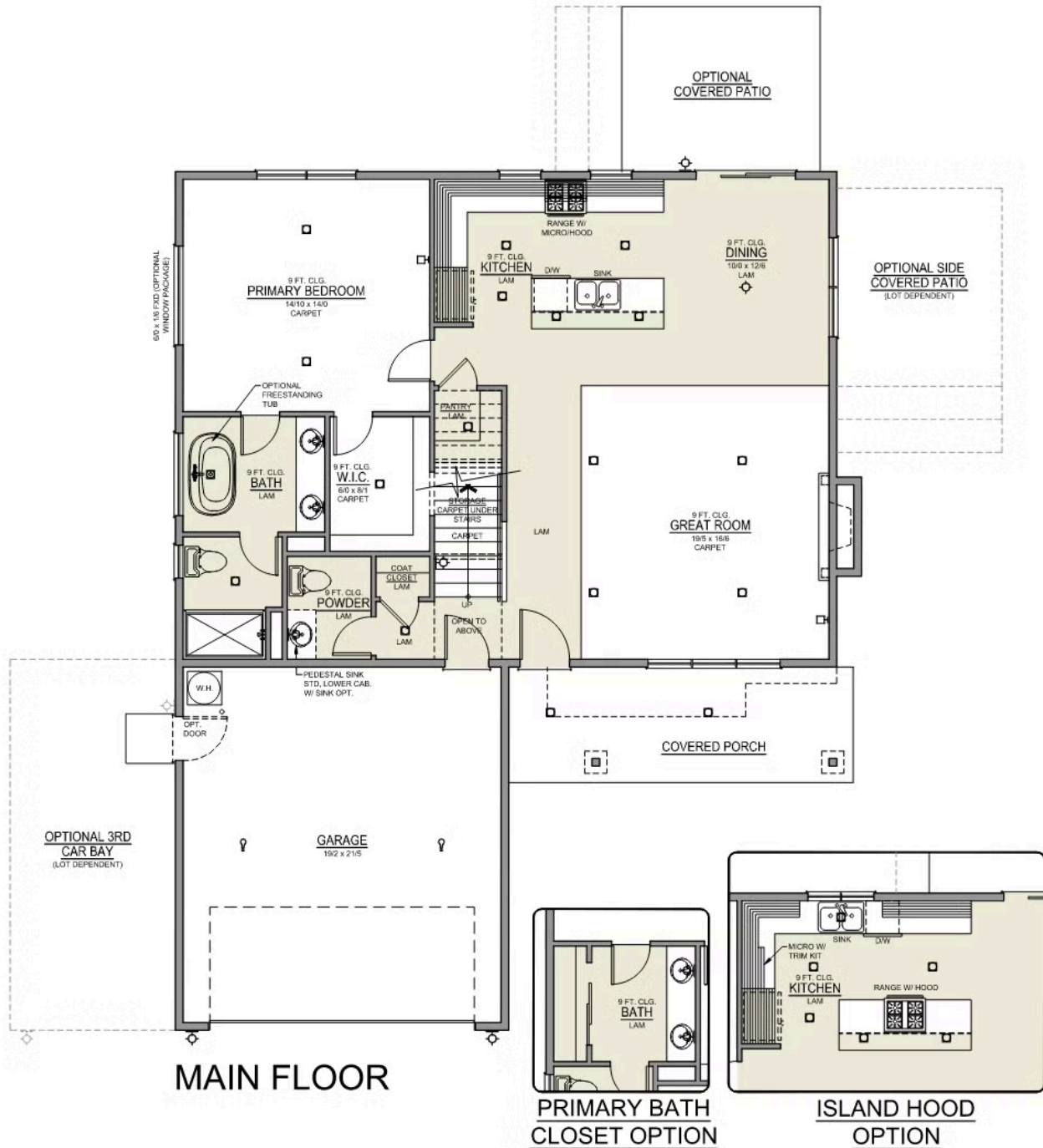
2,373 Sq. Ft.

2 Car Garage

### Thielsen 2-Car

2,373 Sq. Ft.

4 Bedroom, 3 Bath



# THIELSEN PREMIER

## CANYON TRAILS

🛏️ 4 Bedrooms

🚿 2.5 Bathrooms

🏠 2,373 Sq. Ft.

🚗 2 Car Garage

### Thielsen 2-Car

2,373 Sq. Ft.

4 Bedroom, 3 Bath



UPPER FLOOR