

CANYON TRAILS

THIELSEN PREMIER LOT 72

1086 NW Walnut Ave. - \$15k Incentive*
Redmond, OR 97756

 4 Bedrooms  2.5 Bathrooms  2,373 Sq. Ft.  3 Car Garage  649,900

UNDER CONSTRUCTION



V - Farmhouse, 2 Car



- *\$15k Incentive (see agent for details)
- Primary Suite on Main Level
- Walk-in Closet in Primary Suite
- Great Room with Gas Fireplace
- Upstairs Bonus Room / Loft

- Kitchen Island and Pantry
- 9 Foot Ceilings throughout Main Level
- Quartz Countertops throughout Home
- Stainless Steel Appliances
- Covered Front Porch and Patio

 **MonteVista Homes &
PacWest Realty Group**

541-640-5225

In a continual effort to improve our product, MonteVista Homes reserves the right to change product design, features, materials, floor plans, specifications, prices and terms without prior notice. Square footage stated or implied are approximate. Images may be representative of future home and show what's possible not what's included. Seller is a licensed real estate broker in the State of Oregon. CCB#203709



CANYON TRAILS

THIELSEN PREMIER LOT 72

1086 NW Walnut Ave. - \$15k Incentive*

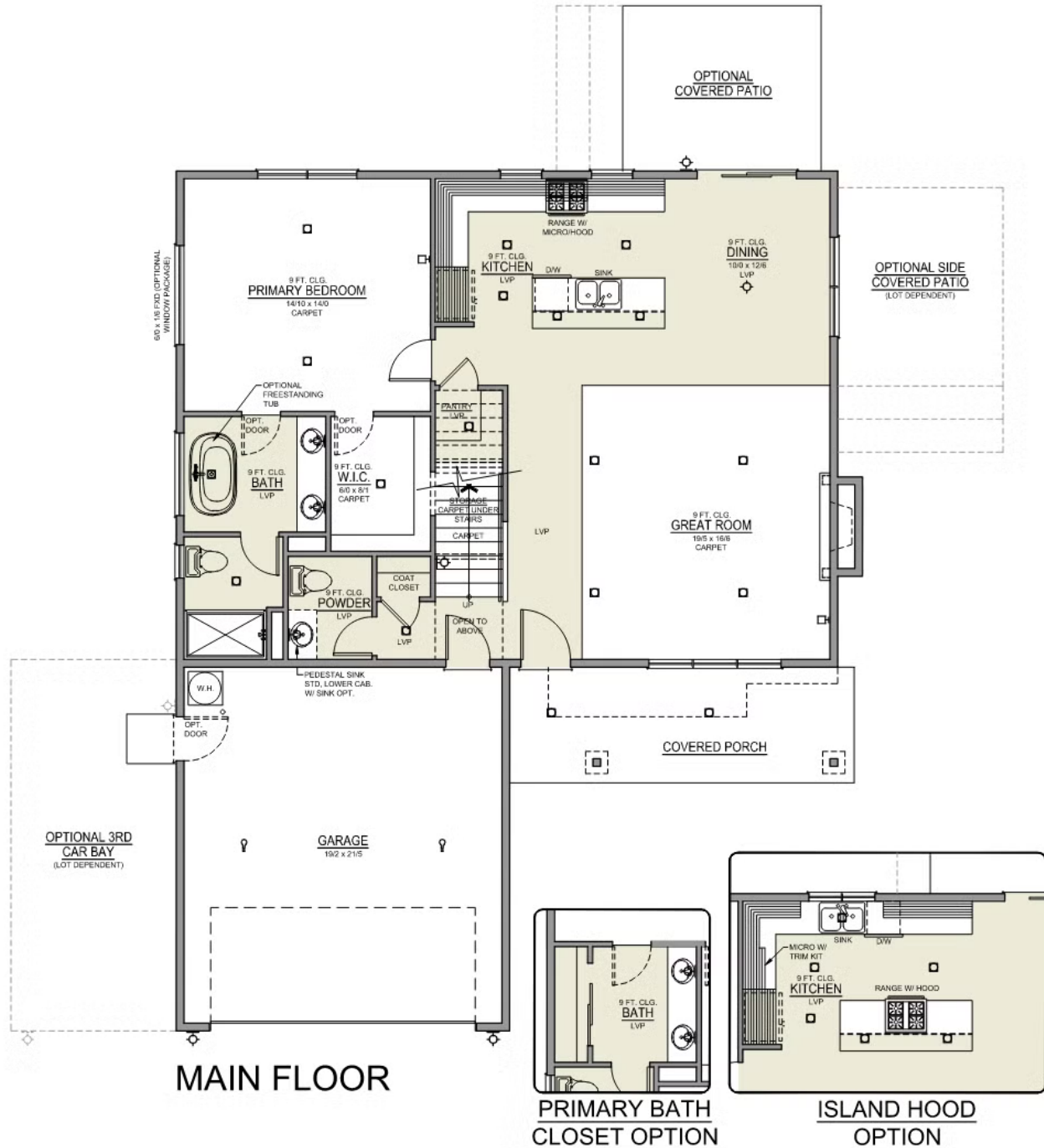
Redmond, OR 97756

4 Bedrooms 2.5 Bathrooms 2,373 Sq. Ft. 3 Car Garage 649,900

Thielsen 2-Car

2,373 Sq. Ft.

4 Bedroom, 3 Bath



CANYON TRAILS

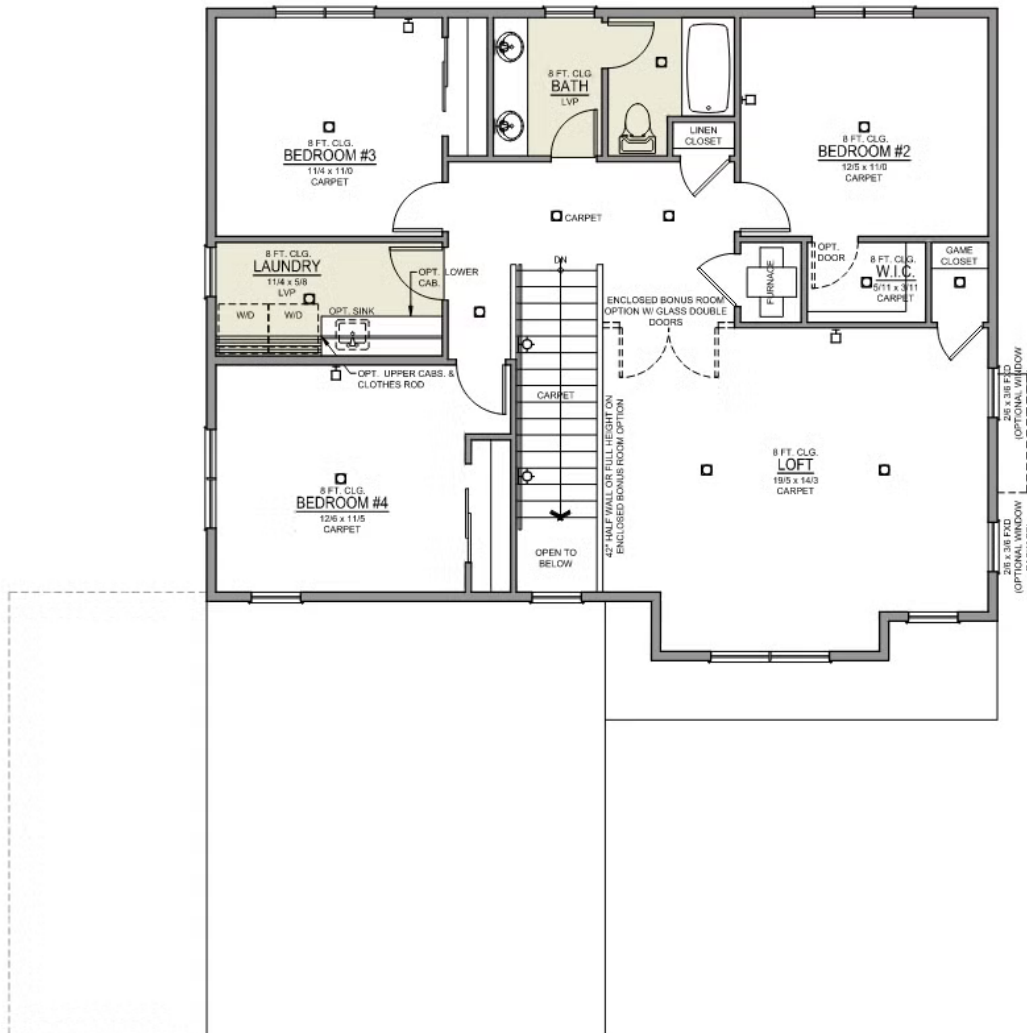
THIELSEN PREMIER
LOT 72

1086 NW Walnut Ave. - \$15k Incentive*

Redmond, OR 97756

4 Bedrooms 2.5 Bathrooms 2,373 Sq. Ft. 3 Car Garage 649,900

Thielsen 2-Car
2,373 Sq. Ft.
4 Bedroom, 3 Bath



UPPER FLOOR

CANYON TRAILS

OPTIONS

THIELSEN PREMIER
LOT 72

1086 NW Walnut Ave. - \$15k Incentive*

Redmond, OR 97756

 4 Bedrooms  2.5 Bathrooms  2,373 Sq. Ft.  3 Car Garage  649,900

- Interior Color Package: "Crystal Heights". Painted Cabinets (All cabinets in house MUST be selected as "PAINTED")
- Exterior Color Package: Alpine Trail
- Light Fixtures: Acadia
- Doors: Hardware Upgrade to "Ladera Levers"
- Bathroom: Upgrade finishes to BLACK - All bathrooms. Soaker Tub INCLUDED. (Plumbing Fixtures, bath accessories and shower door hardware)
- Bathroom: Shower Enclosure Glass Color Choice
- Kitchen: Designer Kitchen Package. Includes Farm Sink (SS), Upgraded Kitchen Faucet, Full-Height Backsplash, and Under Cab Lights.
- Electrical Package: Tech Package Pre Wire - Includes Panel, 110 outlet, 1 Dual Wall Plate (Coax & Ethernet) in Great Room
- Convert Package: Enclose Upstairs Bonus Room/Loft
- Windows Package: Optional Windows
- Kitchen: Island Range with Hood. 36" Cabinets. PAINTED Kitchen & Bathroom Cabinets. Sliding Window over the sink.
- Laundry Room: Lower Cabs With Quartz Top and Backsplash.
- Bathroom: Replace Pedestal Sink with Lower Cabinet - PAINTED. Includes Quartz Counter Top & Backsplash
- Cabinets: Knobs and Pulls
- Counters: Quartz Counters and Backsplash in Kitchen
- Counters: Quartz Counters and Backsplash in Guest Bath
- Counters: Quartz Counters and Backsplash in Master Bath
- Bathroom: Shampoo Niche in Tile Shower. 16x22
- Bathroom: Tile Shower in Place of Fiberglass Shower. 5-ft Shower w/ Fiberglass Pan
- Exterior Covered Patio: Rear - 14x10
- Electrical: Recessed LEDs. Add 2 for 4 total+ Dimmer in Primary Bedroom.
- Electrical: Recessed LEDs. Add 2 for 4 total + Dimmer in Bonus Room or Loft
- Doors Package: Add Optional 6/8 Interior Doors (Premier Series Only)
- Flooring: Great Room - Wood Laminate (Casita Court)
- Garage: Garage Door Opener
- Garage: Garage Door Opener Wireless Keypad
- Garage: Third Car Garage
- HVAC: Air Conditioner PreWire (Dedicated 220 Outlet)
- Fireplace: (Direct Vent) with Mantel and Stone Surround
- Bathroom: Freestanding Soaker Tub



541-640-5225

In a continual effort to improve our product, MonteVista Homes reserves the right to change product design, features, materials, floor plans, specifications, prices and terms without prior notice. Square footage stated or implied are approximate. Images may be representative of future home and show what's possible not what's included. Seller is a licensed real estate broker in the State of Oregon. CCB#203709

