






Feather Ridge

Florence Origin
LOT 153

4103 SW Obsidian Pl. Redmond, OR 97756

 3 Bedrooms  2 Bathrooms  1,102 Sq. Ft.  2 Car Garage  419,900

UNDER CONSTRUCTION



J - TRADITIONAL



- Open Concept Great Room
- Stainless Steel Kitchen Appliances
- Covered Front Porch
- Luxury Wood Laminate Flooring
- Luxury Vinyl Tile in Bath and Laundry Room
- Laundry/Mudroom Access from Garage
- Attached External Storage

MonteVista
HOMES

541-640-5225

In a continual effort to improve our product, MonteVista Homes reserves the right to change product design, features, materials, floor plans, specifications, prices and terms without prior notice. Square footage stated or implied are approximate. Images may be representative of future home and show what's possible not what's included. Seller is a licensed real estate broker in the State of Oregon. CCB#203709



Feather Ridge

Florence Origin
LOT 153

4103 SW Obsidian Pl. Redmond, OR 97756

 3 Bedrooms

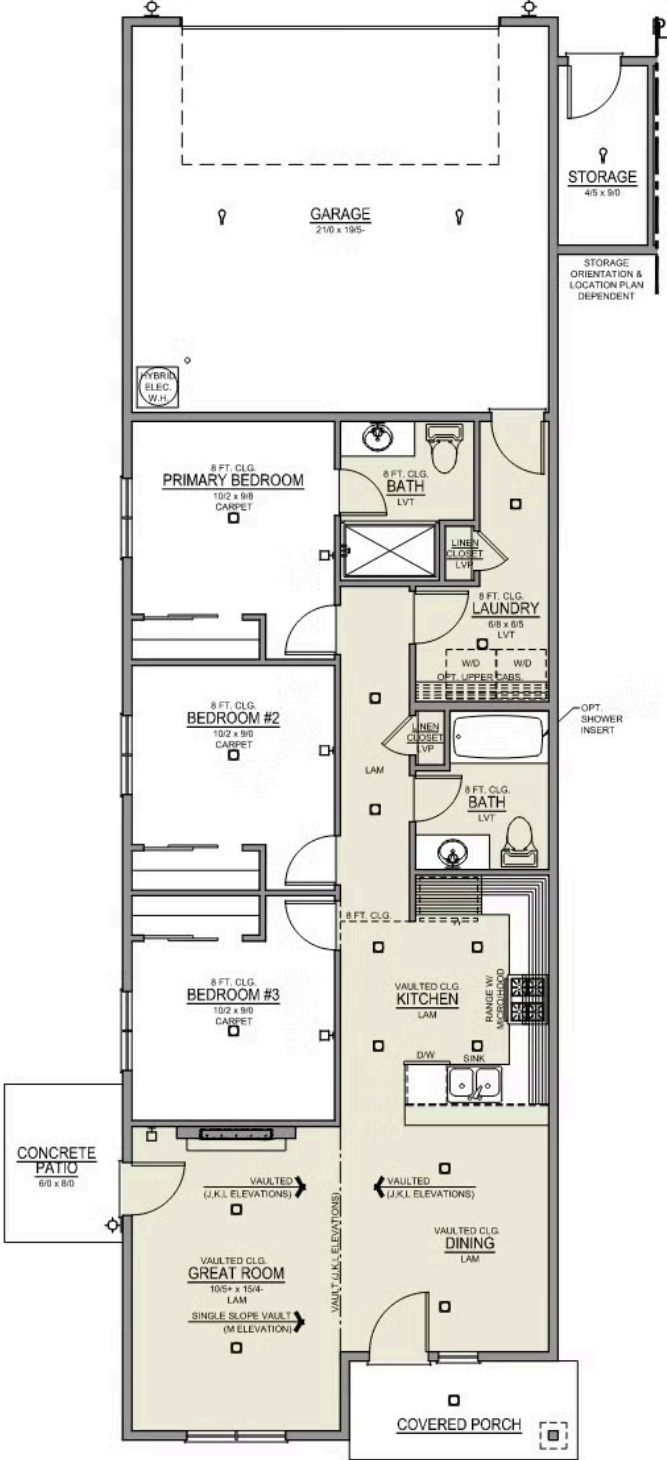
 2 Bathrooms

 1,102 Sq. Ft.

 2 Car Garage

 419,900

Florence 2-Car
1,102 Sq. Ft.
3 Bedroom, 2 Bath



Feather Ridge

OPTIONS

Florence Origin
LOT 153

4103 SW Obsidian Pl. Redmond, OR 97756

 3 Bedrooms

 2 Bathrooms

 1,102 Sq. Ft.

 2 Car Garage

 419,900

- Interior Color Package: "Horizon Pine"
 - Exterior Color Package: Rustic Woods
 - Light Fixtures: Acadia
 - Doors: Hardware Standard. "Cove" knobs / "Amador" front door handle.
 - Bathroom: Shower Enclosure(s) Glass Color Choice
 - Corner Lot Exterior Package: Includes Window trim on Corner Side, Flatwork and Corner Lot Landscaping
 - Electrical: Tech Package Pre Wire - Includes Panel, 110 outlet, 1 Dual Wall Plate (Coax & Ethernet) in Great Room
- Cabinets: Specify Color of Knobs and Pulls
 - Counters: Quartz Counters and Backsplash in Kitchen
 - Garage: Garage Door Opener
 - Garage: Garage Door Opener Wireless Keypad
 - HVAC: System - Ductless Heating & AC "Mini Split" (Includes Prewire).
 - Fireplace: Electric Fireplace - Drywall Floor-to-Ceiling with Mantel. (Origin Series)

MonteVista
HOMES

541-640-5225

In a continual effort to improve our product, MonteVista Homes reserves the right to change product design, features, materials, floor plans, specifications, prices and terms without prior notice. Square footage stated or implied are approximate. Images may be representative of future home and show what's possible not what's included. Seller is a licensed real estate broker in the State of Oregon. CCB#203709

