

McClannahan Summit

Aspen Premier
LOT 95

485 Grant St. Umatilla, OR 97882

3 Bedrooms

2 Bathrooms

1,702 Sq. Ft.

2 Car Garage

366,011

UNDER CONSTRUCTION



V - FARMHOUSE



- Quartz Countertops throughout Home
- Stainless Steel Appliances
- Kitchen Island with Sink
- Corner Kitchen Pantry

- Great Room with Gas Fireplace
- Primary Suite with Walk-in Closet
- Laundry/Mud Room Access from garage

MonteVista
HOMES

541-833-9119

In a continual effort to improve our product, MonteVista Homes reserves the right to change product design, features, materials, floor plans, specifications, prices and terms without prior notice. Square footage stated or implied are approximate. Images may be representative of future home and show what's possible not what's included. Seller is a licensed real estate broker in the State of Oregon. CCB#203709



McClannahan Summit

Aspen Premier
LOT 95

485 Grant St. Umatilla, OR 97882

3 Bedrooms

2 Bathrooms

1,702 Sq. Ft.

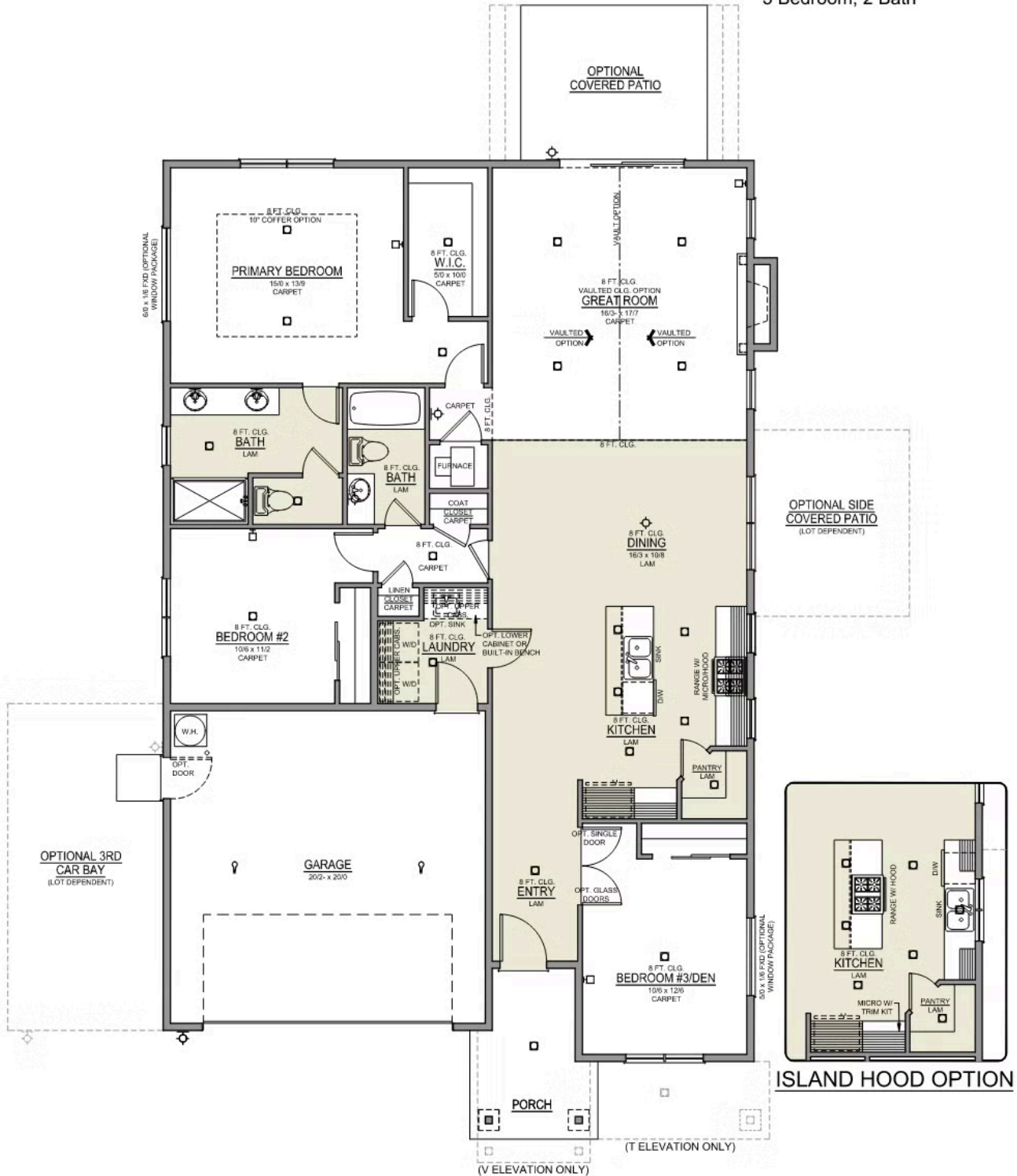
2 Car Garage

366,011

Aspen 2-Car

1,702 Sq. Ft.

3 Bedroom, 2 Bath



McClannahan Summit

Aspen Premier
LOT 95

OPTIONS

485 Grant St. Umatilla, OR 97882

 3 Bedrooms

 2 Bathrooms

 1,702 Sq. Ft.

 2 Car Garage

 366,011

- Interior Color Package: "Crystal Heights". Painted Cabinets (All cabinets in house MUST be selected as "PAINTED")
- Exterior Color Package: Twilight Ridge
- Light Fixtures: Acadia
- Doors: Hardware Standard. "Cove" knobs / "Amador" front door handle.
- Bathroom: Upgraded finishes in SRS. Soaker Tub NOT included. All bathrooms. (Plumbing Fixtures, bath accessories and shower door hardware). *SRS = Spot Resistant Stainless.
- Bathroom: Shower Enclosure Glass Color Choice
- Electrical Package: Tech Package Pre Wire - Includes Panel, 110 outlet, 1 Dual Wall Plate (Coax & Ethernet) in Great Room
- Ceilings: Vault in Great Room and Coffered Ceiling in Primary Bedroom
- Kitchen: 30" Cabinets. PAINTED Kitchen & Bathroom Cabinets.
- Counters: Quartz Counters and Backsplash in Kitchen
- Counters: Quartz Counters and Backsplash in Guest Bath
- Counters: Quartz Counters and Backsplash in Master Bath
- Exterior Covered Patio: Rear - 12x10
- Flooring: Great Room - Wood Laminate (Casita Court)
- Flooring: Hallway Down - Wood Laminate (Casita Court)
- Garage: Garage Door Opener
- Garage: Garage Door Opener Wireless Keypad
- HVAC: Air Conditioner - PreWire not previously selected
- Fireplace: (Direct Vent) with Mantel and Stone Surround
- Kitchen: Farm Sink - Stainless Steel Single Bowl
- Kitchen or Laundry Sink: Upgrade Faucet to Moen Arbor - Specify Color (Black or SRS), Quantity and Location(s)
- ADD: 03910 Bathroom: Upgraded finishes in BLACK. Soaker Tub NOT included. All bathrooms. (Plumbing Fixtures, bath accessories and shower door hardware)
- REMOVE: 03900 Bathroom: Upgraded finishes in SRS. Soaker Tub NOT included. All bathrooms. (Plumbing Fixtures, bath accessories and shower door hardware). *SRS = Spot Resistant Stainless.

MonteVista
HOMES

541-833-9119

In a continual effort to improve our product, MonteVista Homes reserves the right to change product design, features, materials, floor plans, specifications, prices and terms without prior notice. Square footage stated or implied are approximate. Images may be representative of future home and show what's possible not what's included. Seller is a licensed real estate broker in the State of Oregon. CCB#203709

