

MCCLANNAHAN SUMMIT

CHARITY PREMIER
LOT 58

402 Taft St. Umatilla, OR 97882

 3 Bedrooms

 2 Bathrooms

 1,892 Sq. Ft.

 2 Car Garage

 384,900

UNDER CONSTRUCTION



U - Craftsman



- Private Ensuite to 2nd Bedroom
- Designer Kitchen Island Range Available
- Office, Study, or School Room
- Great Room with Gas Fireplace

- Cooks Kitchen
- Quartz Countertops throughout Home
- Corner Kitchen Pantry

 **MonteVista Homes &
PacWest Realty Group**

541-833-9119

In a continual effort to improve our product, MonteVista Homes reserves the right to change product design, features, materials, floor plans, specifications, prices and terms without prior notice. Square footage stated or implied are approximate. Images may be representative of future home and show what's possible not what's included. Seller is a licensed real estate broker in the State of Oregon.
CCB#203709



3 Bedrooms

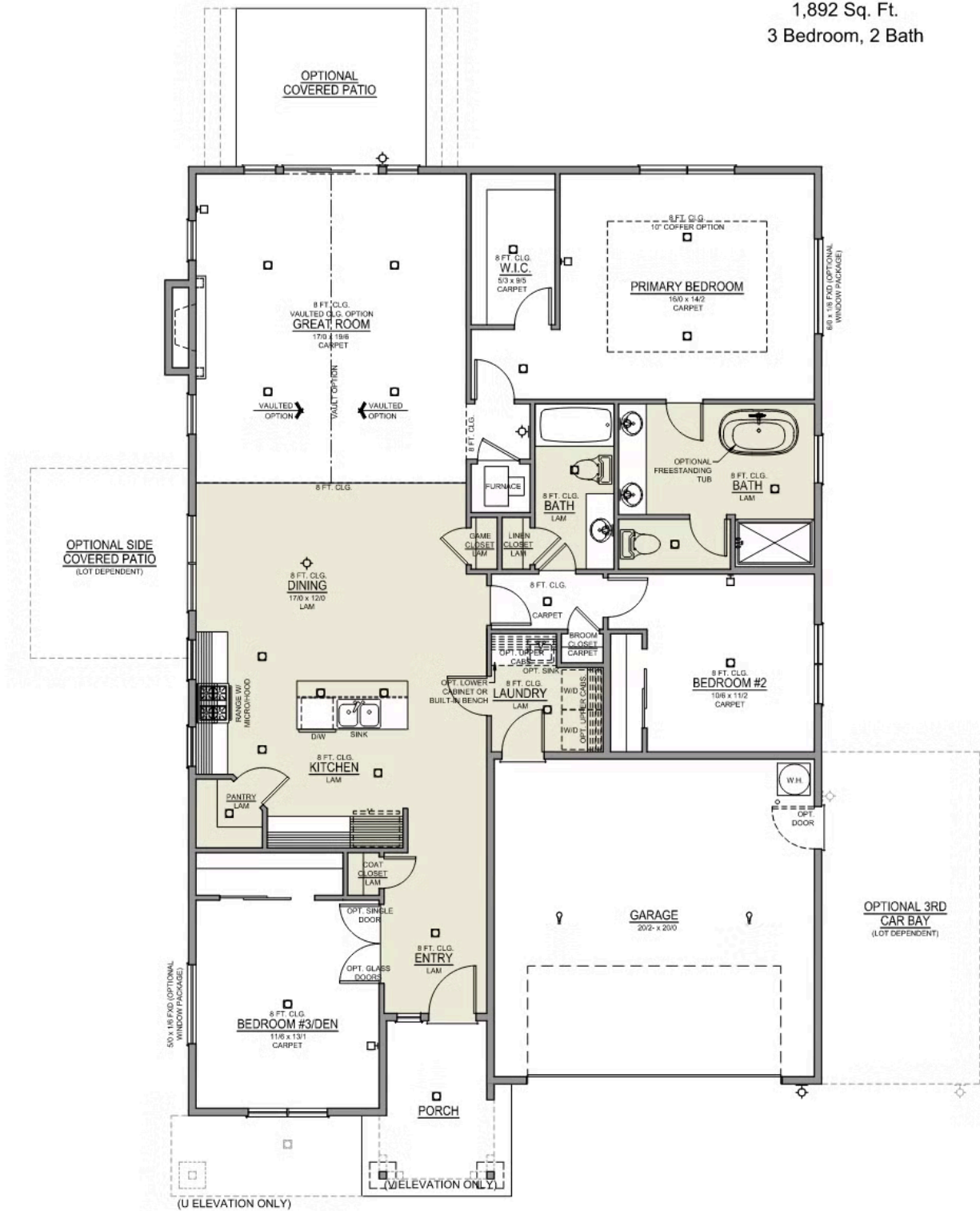
2 Bathrooms

1,892 Sq. Ft.

2 Car Garage

384,900

Charity 2-Car
1,892 Sq. Ft.
3 Bedroom, 2 Bath



 3 Bedrooms

 2 Bathrooms

 1,892 Sq. Ft.

 2 Car Garage

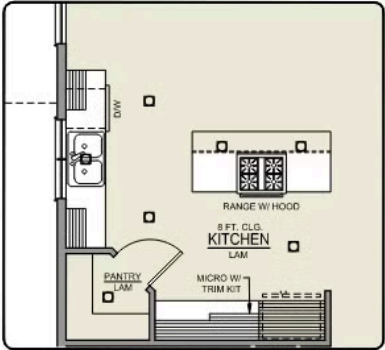
 384,900

Charity 2-Car

1,892 Sq. Ft.
3 Bedroom, 2 Bath



PRIMARY BATH LINEN
CLOSET OPTION



ISLAND HOOD OPTION

MCCLANNAHAN SUMMIT

OPTIONS

CHARITY PREMIER

LOT 58

402 Taft St. Umatilla, OR 97882

 3 Bedrooms

 2 Bathrooms

 1,892 Sq. Ft.

 2 Car Garage

 384,900

- Interior Color Package: "Horizon Pine"
- Exterior Color Package: Twilight Ridge
- Light Fixtures: Acadia
- Doors: Hardware Standard. "Cove" knobs / "Amador" front door handle.
- Bathroom: Shower Enclosure Glass Color Choice
- Electrical Package: Tech Package Pre Wire - Includes Panel, 110 outlet, 1 Dual Wall Plate (Coax & Ethernet) in Great Room
- Windows Package: Optional Windows
- Ceilings: Vault in Great Room and Coffered Ceiling in Primary Bedroom
- Kitchen: Island Range and Hood. 30" Cabinets. Sliding Window over the sink.
- Cabinets: Knobs and Pulls
- Counters: Quartz Counters and Backsplash in Kitchen
- Counters: Quartz Counters and Backsplash in Guest Bath
- Counters: Quartz Counters and Backsplash in Master Bath
- Electrical: Recessed LEDs. Add 2 for 4 total+ Dimmer in Primary Bedroom.
- Doors Package: Add Optional 6/8 Interior Doors (Premier Series Only)
- Flooring: Hallway Down - Wood Laminate (Casita Court)
- Garage: Garage Door Opener
- Garage: Garage Door Opener Wireless Keypad
- HVAC: Air Conditioner - PreWire not previously selected
- Fireplace: (Direct Vent) with Mantel and Stone Surround
- Exterior: Stone on all Front Column(s)
- Kitchen: Farm Sink - Stainless Steel Single Bowl
- Kitchen: Upgrade Faucet to Moen Arbor SRS
- Bathroom: Freestanding Soaker Tub



541-833-9119

In a continual effort to improve our product, MonteVista Homes reserves the right to change product design, features, materials, floor plans, specifications, prices and terms without prior notice. Square footage stated or implied are approximate. Images may be representative of future home and show what's possible not what's included. Seller is a licensed real estate broker in the State of Oregon.
CCB#203709

