

# MCCLANNAHAN SUMMIT

CHARLOTTE PREMIER  
LOT 51

1694 Wilson St. Umatilla, OR 97882

 4 Bedrooms

 2 Bathrooms

 1,701 Sq. Ft.

 2 Car Garage

 369,997

MOVE-IN READY



T - Traditional 2 Car



- \*\$10k Incentive (see agent for details)
- Kitchen Island with Sink
- Quartz countertops throughout the Home
- Open Great Room with Gas Fireplace
- Kitchen Pantry
- Stainless Steel Appliances
- Laundry Room

 **MonteVista Homes &  
PacWest Realty Group**

**541-833-9119**

In a continual effort to improve our product, MonteVista Homes reserves the right to change product design, features, materials, floor plans, specifications, prices and terms without prior notice. Square footage stated or implied are approximate. Images may be representative of future home and show what's possible not what's included. Seller is a licensed real estate broker in the State of Oregon. CCB#203709



MCCLANNAHAN SUMMIT

CHARLOTTE PREMIER  
LOT 51

1694 Wilson St. Umatilla, OR 97882

4 Bedrooms

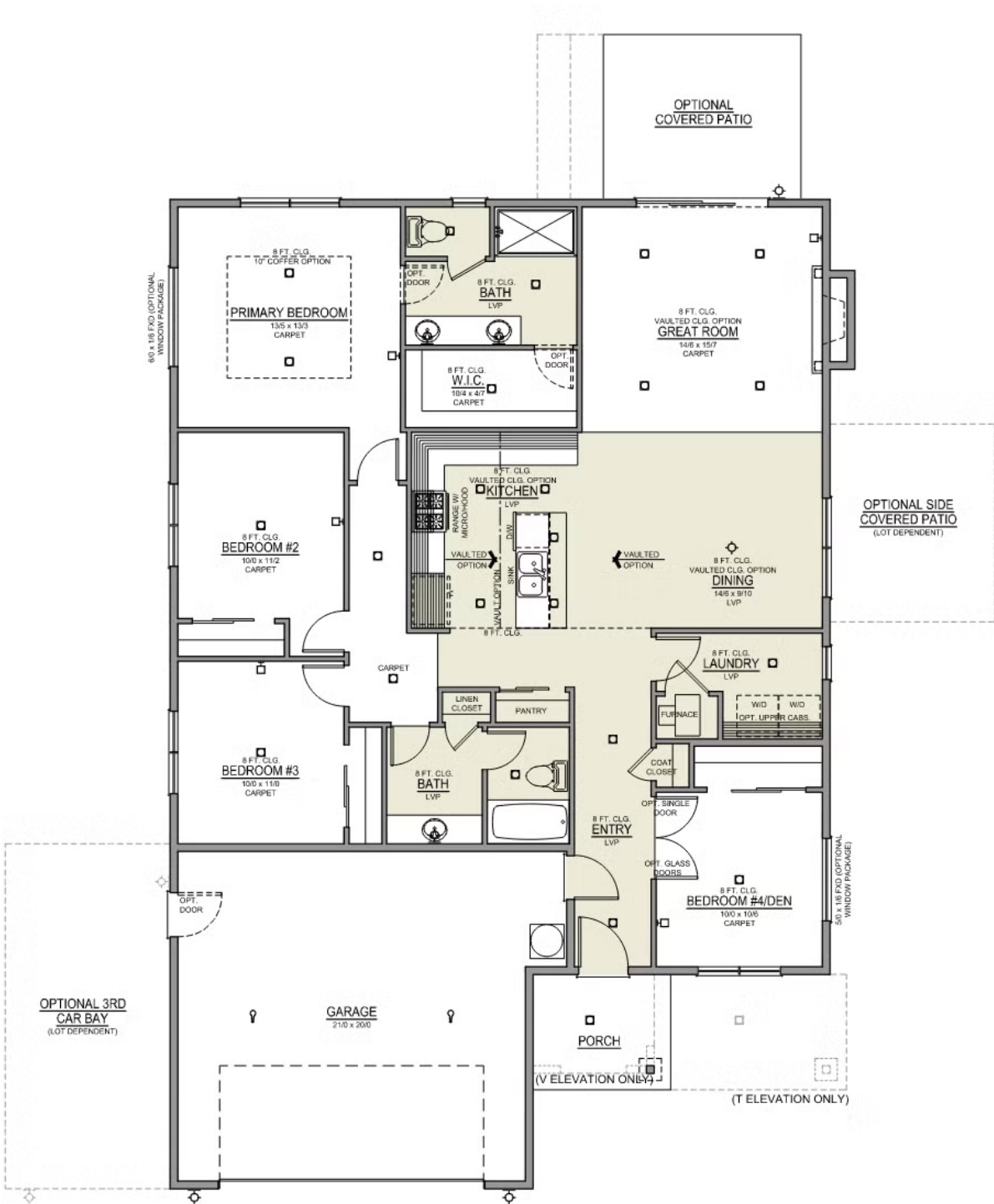
2 Bathrooms

1,701 Sq. Ft.

2 Car Garage

369,997

Charlotte 2-Car  
1,701 Sq. Ft.  
4 Bedroom, 2 Bath



# MCCLANNAHAN SUMMIT

## OPTIONS

CHARLOTTE PREMIER  
LOT 51

1694 Wilson St. Umatilla, OR 97882

 4 Bedrooms    2 Bathrooms    1,701 Sq. Ft.    2 Car Garage    369,997

- Interior Color Package: "Urban Oasis"
- Exterior Color Package: Deschutes Frost
- Light Fixtures: Acadia
- Door Hardware: Cove
- Shower Enclosure Glass Color Choice
- Package: Tech Package Pre Wire - Includes Panel, 110 outlet, 1 Dual Wall Plate (Coax & Ethernet) in Great Room
- Package: Optional Windows
- Vault in Great Room and Coffered Ceiling in Primary Bedroom
- Cabinets: Knobs and Pulls
- Quartz Counters and Backsplash in Kitchen
- Quartz Counters and Backsplash in Guest Bath
- Quartz Counters and Backsplash in Master Bath
- Covered Patio - Rear - 12x10
- Pendant Lights over Kitchen Island - In place of recessed LED
- Package: Optional 6/8 Interior Doors
- LVP Flooring: Hallway Down
- Garage: Garage Door Opener
- Garage: Garage Door Opener Wireless Keypad
- Air Conditioner - PreWire not previously selected
- Fireplace (Direct Vent) with Mantel and Stone Surround
- Exterior Landscape: Backyard Landscaping. Up to a 60-ft wide lot
- Stone on all Front Column(s)
- Kitchen: Upgrade Faucet to Moen Arbor SRS



**541-833-9119**

*In a continual effort to improve our product, MonteVista Homes reserves the right to change product design, features, materials, floor plans, specifications, prices and terms without prior notice. Square footage stated or implied are approximate. Images may be representative of future home and show what's possible not what's included. Seller is a licensed real estate broker in the State of Oregon.*  
CCB#203709

