

# McClannahan Summit

Charlotte Premier  
LOT 106

550 Grant St. Umatilla, OR 97882

4 Bedrooms

2 Bathrooms

1,701 Sq. Ft.

2 Car Garage

369,900

UNDER CONSTRUCTION



V - FARMHOUSE 2 CAR



- Kitchen Island with Sink
- Quartz Countertops throughout Home
- Open Great Room with Fireplace

- Kitchen Pantry
- Stainless Steel Kitchen Appliances
- Laundry Room

MonteVista  
HOMES

541-833-9119

In a continual effort to improve our product, MonteVista Homes reserves the right to change product design, features, materials, floor plans, specifications, prices and terms without prior notice. Square footage stated or implied are approximate. Images may be representative of future home and show what's possible not what's included. Seller is a licensed real estate broker in the State of Oregon. CCB#203709



# McClannahan Summit

Charlotte Premier  
LOT 106

550 Grant St. Umatilla, OR 97882

🛏 4 Bedrooms

🚿 2 Bathrooms

🏠 1,701 Sq. Ft.

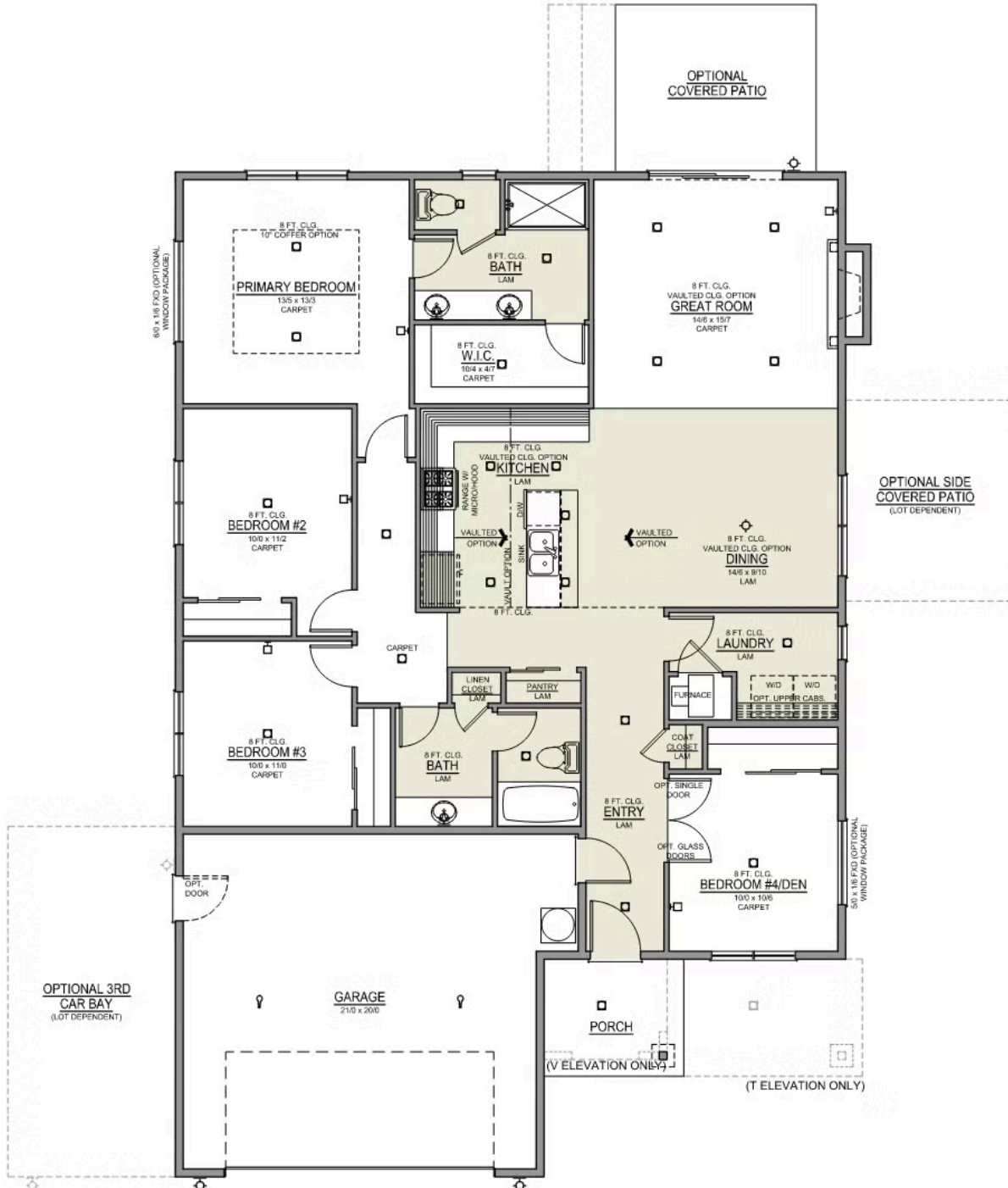
🚗 2 Car Garage

💰 369,900

## Charlotte 2-Car

1,701 Sq. Ft.

4 Bedroom, 2 Bath



# McClannahan Summit

## OPTIONS

Charlotte Premier  
LOT 106

550 Grant St. Umatilla, OR 97882

 4 Bedrooms

 2 Bathrooms

 1,701 Sq. Ft.

 2 Car Garage

 369,900

- Interior Color Package: "Crystal Heights". Painted Cabinets (All cabinets in house MUST be selected as "PAINTED")
- Exterior Color Package: Rustic Woods
- Light Fixtures: Acadia
- Doors: Hardware Standard. "Cove" knobs / "Amador" front door handle.
- Bathroom: Upgraded finishes in BLACK. Soaker Tub NOT included. All bathrooms. (Plumbing Fixtures, bath accessories and shower door hardware)
- Bathroom: Shower Enclosure(s) Glass Color Choice
- Electrical: Tech Package Pre Wire - Includes Panel, 110 outlet, 1 Dual Wall Plate (Coax & Ethernet) in Great Room
- Ceilings: (Premier Series Only) Vault in Great Room and Coffered Ceiling in Primary Bedroom.
- Kitchen: 36" Cabinets. PAINTED Kitchen & Bathroom Cabinets.
- Cabinets: Specify Color of Knobs and Pulls
- Kitchen: Full Height Backsplash
- Counters: Quartz Counters and Backsplash in Kitchen
- Counters: Quartz Counters and Backsplash in Guest Bath
- Counters: Quartz Counters and Backsplash in Primary Bath
- Exterior Covered Patio: Rear - 12x10
- Flooring: Great Room - Wood Laminate (Casita Court)
- Flooring: Hallway Down - Wood Laminate (Casita Court)
- Garage: Garage Door Opener
- Garage: Garage Door Opener Wireless Keypad
- HVAC: Air Conditioner - PreWire not previously selected (Not available for Duets)
- Fireplace: Gas Fireplace (Direct Vent) with Mantel and Stone Surround
- Garage: Insulated Garage - 2 Car Bays. Walls and Ceiling (Garage Door already insulated).
- Kitchen: Farm Sink - Stainless Steel Single Bowl  
\*\*REQUIRES QUARTZ COUNTERTOPS\*\*
- Kitchen or Laundry Sink: Upgrade Faucet to Moen Arbor. SPECIFY - Location(s) and Color (Black or SRS).

**MonteVista**  
HOMES

**541-833-9119**

*In a continual effort to improve our product, MonteVista Homes reserves the right to change product design, features, materials, floor plans, specifications, prices and terms without prior notice. Square footage stated or implied are approximate. Images may be representative of future home and show what's possible not what's included. Seller is a licensed real estate broker in the State of Oregon. CCB#203709*

