

# MCCLANNAHAN SUMMIT

JEFFERSON PREMIER  
LOT 56

368 Taft St. Umatilla, OR 97882

🗨️ 4 Bedrooms    🚿 2.5 Bathrooms    🏠 1,761 Sq. Ft.    🚗 2 Car Garage    💰 364,900

UNDER CONSTRUCTION



U - Craftsman



- 4th Bedroom or Den on Main Level
- 9 Foot Ceilings throughout Main Level
- Gourmet Kitchen
- Kitchen Island with Sink
- Kitchen Pantry

- Open Great Room with Gas Fireplace
- Primary Suite with Walk-in Closet
- Quartz Countertops throughout Home
- Stainless Steel Appliances

 **MonteVista Homes &  
PacWest Realty Group**

**541-833-9119**

*In a continual effort to improve our product, MonteVista Homes reserves the right to change product design, features, materials, floor plans, specifications, prices and terms without prior notice. Square footage stated or implied are approximate. Images may be representative of future home and show what's possible not what's included. Seller is a licensed real estate broker in the State of Oregon. CCB#203709*



# MCCLANNAHAN SUMMIT

# JEFFERSON PREMIER LOT 56

368 Taft St. Umatilla, OR 97882

🏠 4 Bedrooms

🚿 2.5 Bathrooms

🏠 1,761 Sq. Ft.

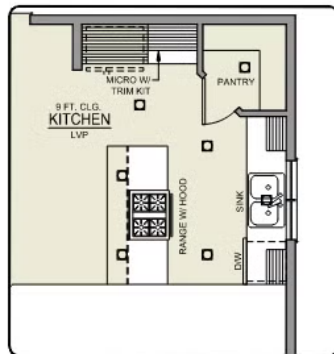
🚗 2 Car Garage

💰 364,900

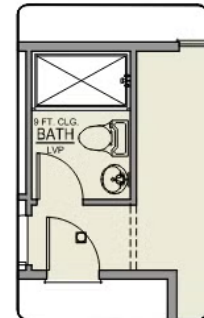
## Jefferson 2-Car

1,761 Sq. Ft.

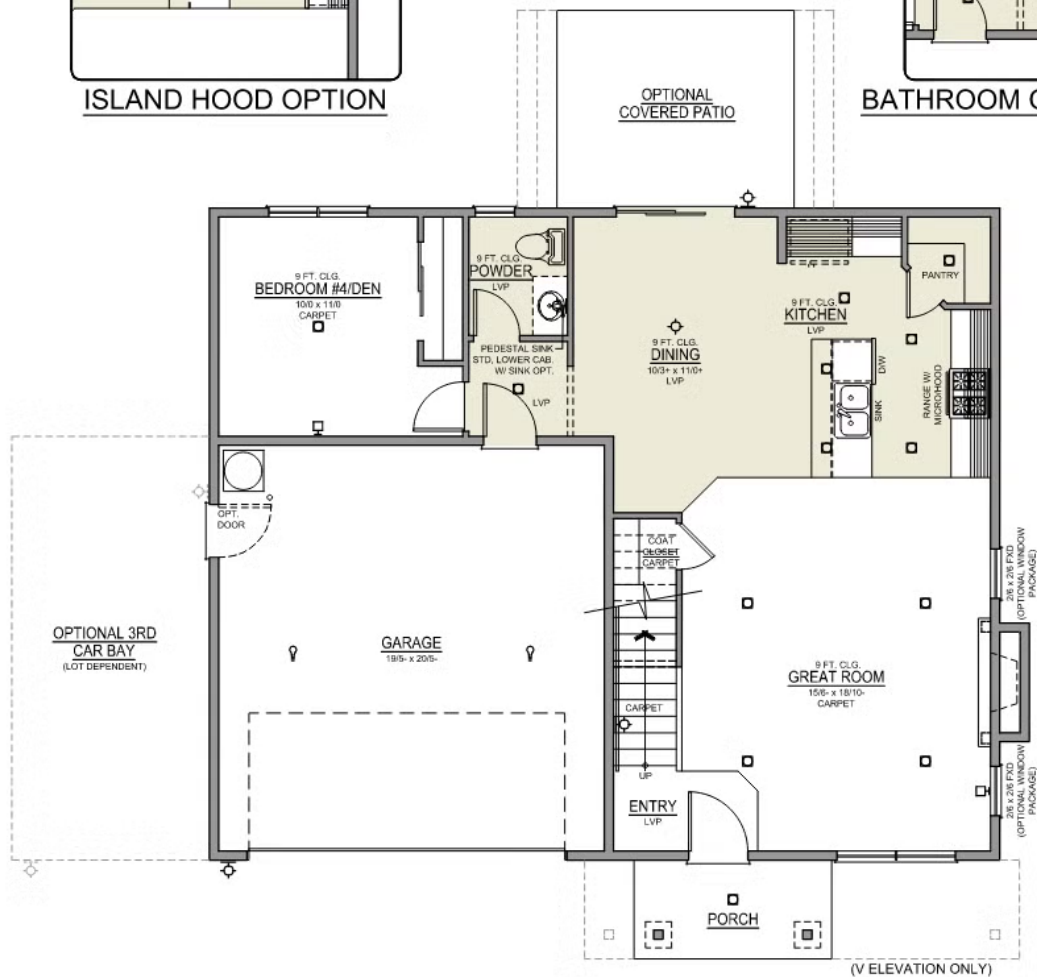
4 Bedroom, 2.5 Bath



ISLAND HOOD OPTION



BATHROOM OPTION



MAIN FLOOR

# MCCLANNAHAN SUMMIT

JEFFERSON PREMIER  
LOT 56

368 Taft St. Umatilla, OR 97882

🏠 4 Bedrooms

🚿 2.5 Bathrooms

🏠 1,761 Sq. Ft.

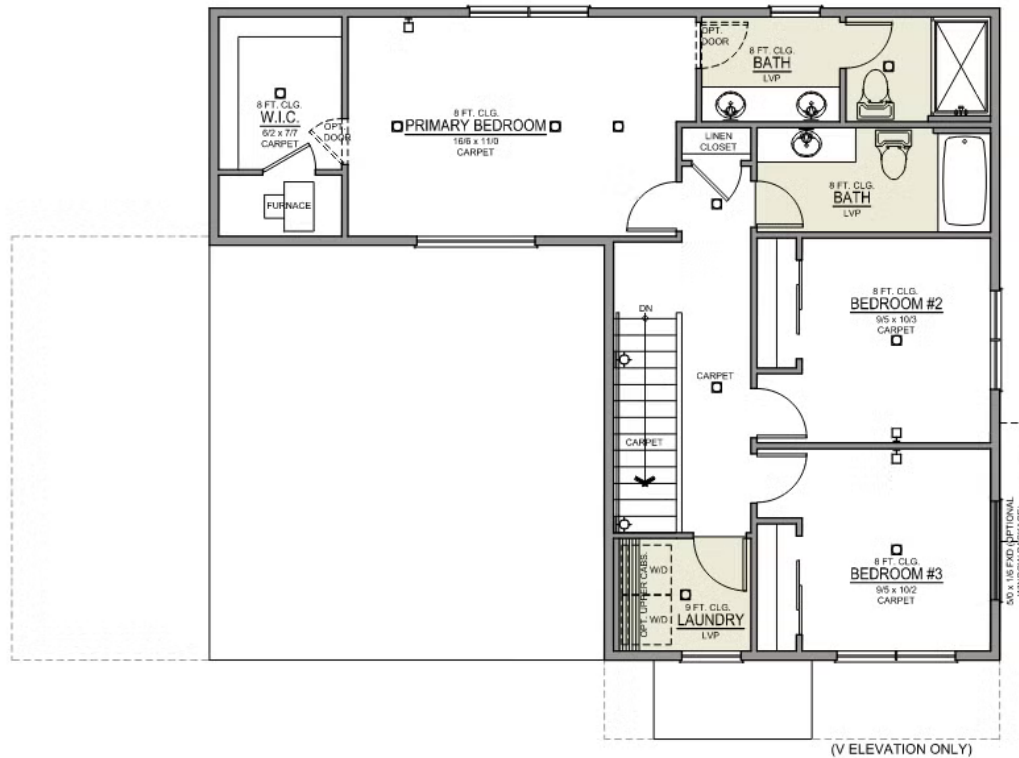
🚗 2 Car Garage

💰 364,900

## Jefferson 2-Car

1,761 Sq. Ft.

4 Bedroom, 2.5 Bath



UPPER FLOOR

# MCCLANNAHAN SUMMIT

## OPTIONS

JEFFERSON PREMIER  
LOT 56

368 Taft St. Umatilla, OR 97882

 4 Bedrooms  2.5 Bathrooms  1,761 Sq. Ft.  2 Car Garage  364,900

- Interior Color Package: "Granite Shoreline". Painted Cabinets (All cabinets in house MUST be selected as "PAINTED")
- Exterior Color Package: Alpine Trail
- Exterior Color Package: Spring Mist
- Light Fixtures: Acadia
- Doors: Hardware Standard. "Cove" knobs / "Amador" front door handle.
- Bathroom: Shower Enclosure Glass Color Choice
- Electrical Package: Tech Package Pre Wire - Includes Panel, 110 outlet, 1 Dual Wall Plate (Coax & Ethernet) in Great Room
- Windows Package: Optional Windows
- Kitchen: 30" Cabinets. PAINTED Kitchen & Bathroom Cabinets.
- Cabinets: Knobs and Pulls
- Counters: Quartz Counters and Backsplash in Kitchen
- Counters: Quartz Counters and Backsplash in Guest Bath
- Counters: Quartz Counters and Backsplash in Master Bath
- Bathroom: JEFFERSON only - Add 5' Shower in Downstairs Bathroom
- Kitchen: Pendant Lights over Kitchen Island - In place of recessed LED
- Doors Package: Add Optional 6/8 Interior Doors (Premier Series Only)
- Garage: Garage Door Opener
- Garage: Garage Door Opener Wireless Keypad
- HVAC: Air Conditioner - PreWire not previously selected
- Fireplace: (Direct Vent) with Mantel and Stone Surround
- Kitchen: Upgrade Faucet to Moen Arbor SRS
- Price Improvement 1
- \*\*\*\*DO NOT PAINT ALPINE TRAIL\*\*\*



541-833-9119

*In a continual effort to improve our product, MonteVista Homes reserves the right to change product design, features, materials, floor plans, specifications, prices and terms without prior notice. Square footage stated or implied are approximate. Images may be representative of future home and show what's possible not what's included. Seller is a licensed real estate broker in the State of Oregon.*

CCB#203709

