

McClannahan Summit

Miranda Premier
LOT 98

549 Grant St. Umatilla, OR 97882

🏠 4 Bedrooms

🚿 3 Bathrooms

🏠 2,517 Sq. Ft.

🚗 2 Car Garage

🏷️ 469,900

UNDER CONSTRUCTION



T - TRADITIONAL



- 9 Foot Ceilings throughout Main Level
- Great Room with Fireplace
- Kitchen Island with Sink
- Kitchen Pantry
- Upstairs Bonus Room / Loft

- Great Room with Fireplace
- Primary Suite with Walk-in Closet
- Quartz Countertops throughout Home
- Stainless Steel Appliances

MonteVista
HOMES

541-833-9119

In a continual effort to improve our product, MonteVista Homes reserves the right to change product design, features, materials, floor plans, specifications, prices and terms without prior notice. Square footage stated or implied are approximate. Images may be representative of future home and show what's possible not what's included. Seller is a licensed real estate broker in the State of Oregon. CCB#203709



McClannahan Summit

Miranda Premier
LOT 98

549 Grant St. Umatilla, OR 97882

🛏 4 Bedrooms

🚿 3 Bathrooms

🏠 2,517 Sq. Ft.

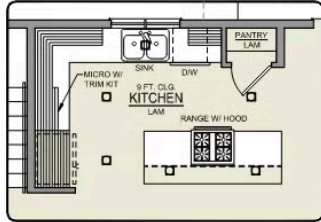
🚗 2 Car Garage

💰 469,900

Miranda 2-Car

2,517 Sq. Ft.

4 Bedroom, 3 Bath



MAIN FLOOR

McClannahan Summit

Miranda Premier
LOT 98

549 Grant St. Umatilla, OR 97882

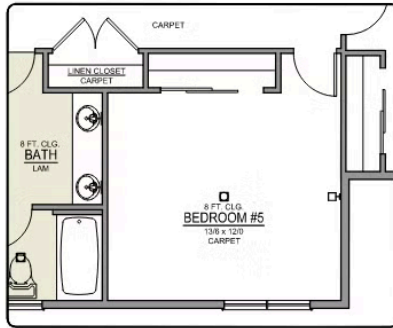
4 Bedrooms

3 Bathrooms

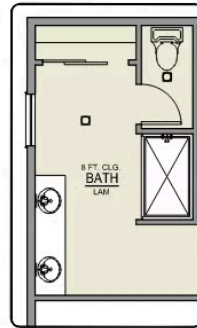
2,517 Sq. Ft.

2 Car Garage

469,900

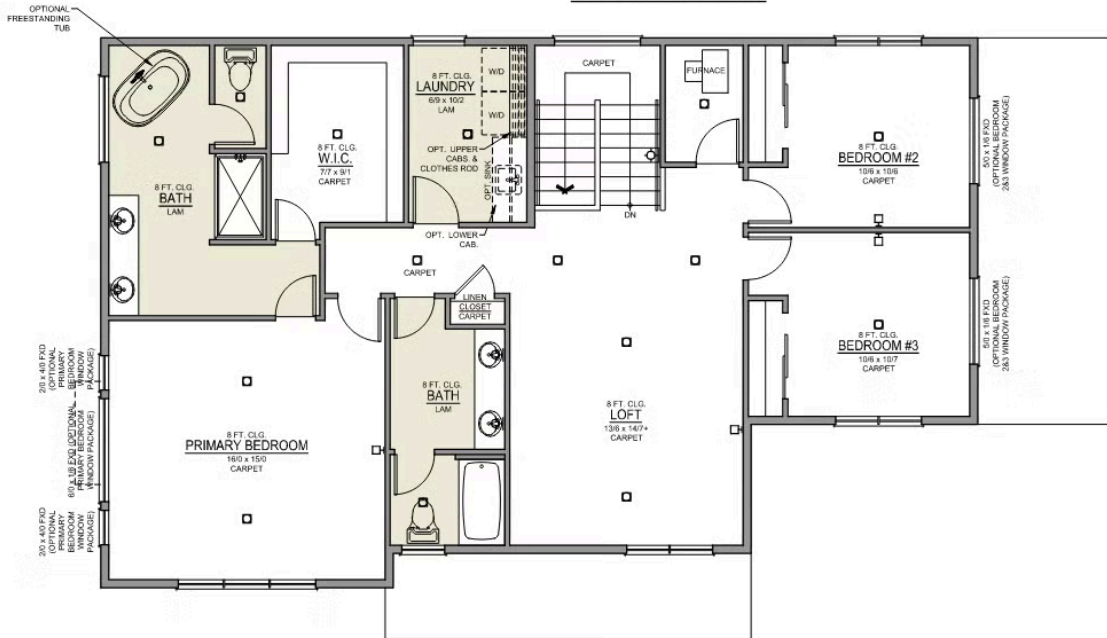


BEDROOM #5 OPTION



PRIMARY BATH CLOSET OPTION

Miranda 2-Car
2,517 Sq. Ft.
4 Bedroom, 3 Bath



UPPER FLOOR

McClannahan Summit

OPTIONS

Miranda Premier
LOT 98

549 Grant St. Umatilla, OR 97882

 4 Bedrooms

 3 Bathrooms

 2,517 Sq. Ft.

 2 Car Garage

 469,900

- Interior Color Package: "Granite Shoreline". Painted Cabinets (All cabinets in house MUST be selected as "PAINTED")
- Exterior Color Package: Timberline Meadows
- Light Fixtures: Acadia
- Doors: Hardware Standard. "Cove" knobs / "Amador" front door handle.
- Bathroom: Upgrade finishes to BLACK. Soaker Tub INCLUDED. All bathrooms. (Plumbing Fixtures, bath accessories and shower door hardware)
- Bathroom: Shower Enclosure(s) Glass Color Choice
- Corner Lot Exterior Package: Includes Window trim on Corner Side, Flatwork and Corner Lot Landscaping
- Electrical: Tech Package Pre Wire - Includes Panel, 110 outlet, 1 Dual Wall Plate (Coax & Ethernet) in Great Room
- Convert Package: Theilsen, Miranda, and Kailua - Enclose upstairs Loft. (THE: Glass French Doors to make bonus room. MDA & KAI: Single door + Closet to make 5th bedroom).
- Windows Package: Optional Windows
- Kitchen: Island Range with Hood. 36" Cabinets. PAINTED Kitchen & Bathroom Cabinets. Sliding Window over the sink.
- Cabinets: Specify Color of Knobs and Pulls
- Counters: Quartz Counters and Backsplash in Kitchen
- Counters: Quartz Counters and Backsplash in Guest Bath
- Counters: Quartz Counters and Backsplash in Primary Bath
- Exterior Covered Patio: Rear - 14x10
- Flooring: Great Room - Wood Laminate (Casita Court)
- Flooring: Hallway Up - Wood Laminate (Casita Court)
- Garage: Garage Door Opener
- Garage: Garage Door Opener Wireless Keypad
- HVAC: Air Conditioner - PreWire not previously selected (Not available for Duets)
- Fireplace: Gas Fireplace (Direct Vent) with Mantel and Stone Surround
- Garage: Insulated Garage - 2 Car Bays. Walls and Ceiling (Garage Door already insulated).
- Exterior: Stone on all Front Column(s)
- Exterior: Stone Garage Wing Wall
- Kitchen: Farm Sink - Stainless Steel Single Bowl
REQUIRES QUARTZ COUNTERTOPS
- Kitchen or Laundry Sink: Upgrade Faucet to Moen Arbor. SPECIFY - Location(s) and Color (Black or SRS).
- Bathroom: Freestanding Soaker Tub

MonteVista
HOMES

541-833-9119

In a continual effort to improve our product, MonteVista Homes reserves the right to change product design, features, materials, floor plans, specifications, prices and terms without prior notice. Square footage stated or implied are approximate. Images may be representative of future home and show what's possible not what's included. Seller is a licensed real estate broker in the State of Oregon. CCB#203709

