

# MCCLANNAHAN SUMMIT

THIELSEN PREMIER  
LOT 57

386 Taft St. Umatilla, OR 97882

🗨️ 4 Bedrooms   🚿 2.5 Bathrooms   🏠 2,373 Sq. Ft.   🚗 2 Car Garage   💰 449,900

UNDER CONSTRUCTION



V - Farmhouse, 2 Car



- Primary Suite On Main Level
- Walk-in Closet in Primary
- Great Room with Gas Fireplace
- Upstairs Bonus Room / Loft
- Kitchen Island and Pantry

- 9 Foot Ceilings throughout Main Level
- Quartz Countertops throughout Home
- Stainless Steel Appliances
- Covered Front Porch

 **MonteVista Homes &  
PacWest Realty Group**

**541-833-9119**

*In a continual effort to improve our product, MonteVista Homes reserves the right to change product design, features, materials, floor plans, specifications, prices and terms without prior notice. Square footage stated or implied are approximate. Images may be representative of future home and show what's possible not what's included. Seller is a licensed real estate broker in the State of Oregon. CCB#203709*



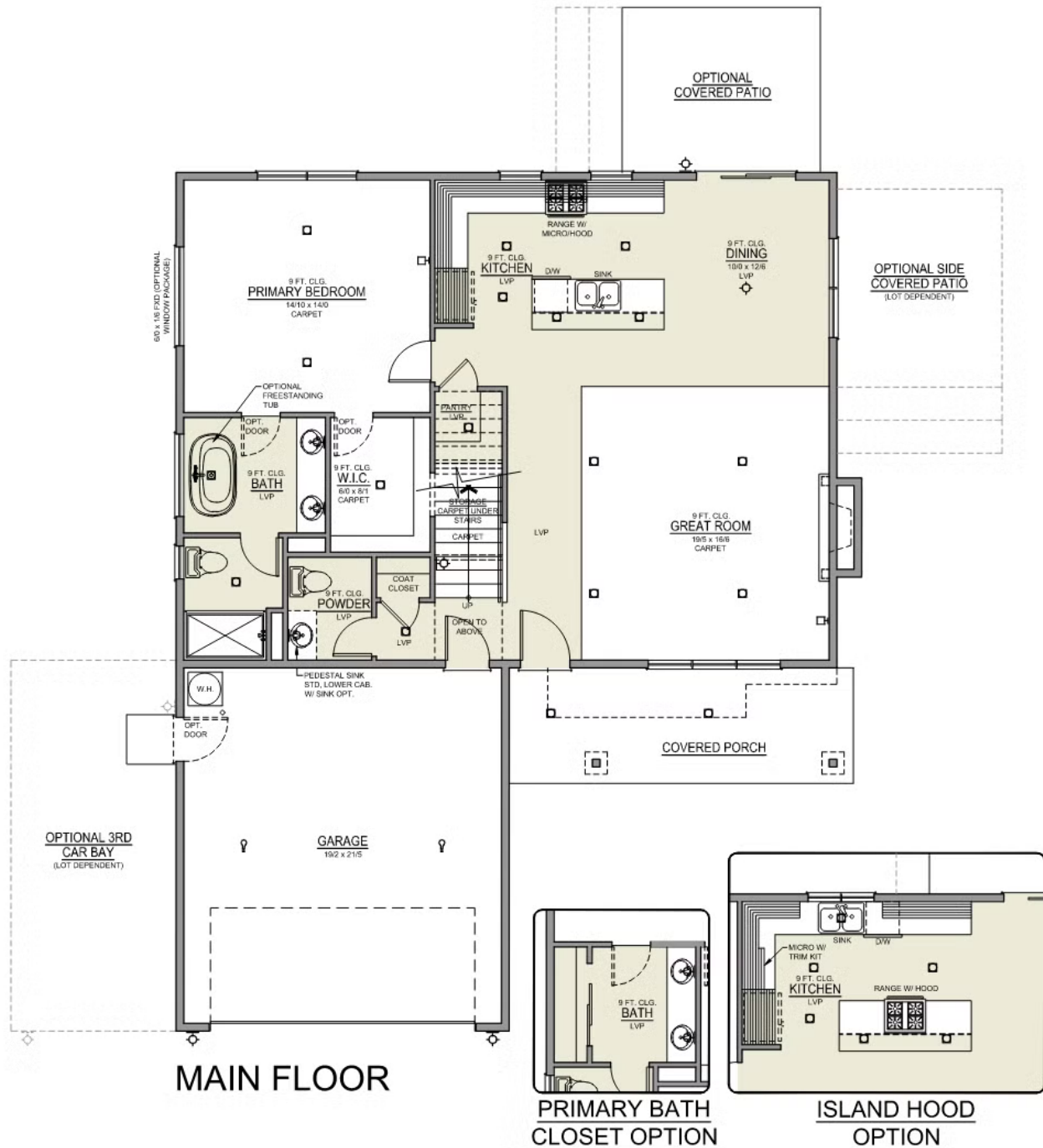
# MCCLANNAHAN SUMMIT

THIELSEN PREMIER  
LOT 57

386 Taft St. Umatilla, OR 97882

4 Bedrooms 2.5 Bathrooms 2,373 Sq. Ft. 2 Car Garage 449,900

Thielsen 2-Car  
2,373 Sq. Ft.  
4 Bedroom, 3 Bath



# MCCLANNAHAN SUMMIT

THIELSEN PREMIER  
LOT 57

386 Taft St. Umatilla, OR 97882

4 Bedrooms 2.5 Bathrooms 2,373 Sq. Ft. 2 Car Garage 449,900

Thielsen 2-Car  
2,373 Sq. Ft.  
4 Bedroom, 3 Bath



UPPER FLOOR

# MCCLANNAHAN SUMMIT

## OPTIONS

THIELSEN PREMIER

LOT 57

386 Taft St. Umatilla, OR 97882

 4 Bedrooms  2.5 Bathrooms  2,373 Sq. Ft.  2 Car Garage  449,900

- Interior Color Package: "Mountain Vogue". Painted Cabinets (All cabinets in house MUST be selected as "PAINTED")
- Exterior Color Package: Rustic Woods
- Light Fixtures: Acadia
- Doors: Hardware Standard. "Cove" knobs / "Amador" front door handle.
- Bathroom: Shower Enclosure Glass Color Choice
- Electrical Package: Tech Package Pre Wire - Includes Panel, 110 outlet, 1 Dual Wall Plate (Coax & Ethernet) in Great Room
- Windows Package: Optional Windows
- Kitchen: Island Range and Hood. 30" Cabinets. PAINTED Kitchen & Bathroom Cabinets. Sliding Window over the sink.
- Bathroom: Replace Pedestal Sink with Lower Cabinet - PAINTED. Includes Quartz Counter Top & Backsplash
- Cabinets: Knobs and Pulls
- Counters: Quartz Counters and Backsplash in Kitchen
- Counters: Quartz Counters and Backsplash in Guest Bath
- Counters: Quartz Counters and Backsplash in Master Bath
- Exterior Covered Patio: Rear - 12x10
- Electrical: Recessed LEDs. Add 2 for 4 total+ Dimmer in Primary Bedroom.
- Electrical: Recessed LEDs. Add 2 for 4 total + Dimmer in Bonus Room or Loft
- Doors Package: Add Optional 6/8 Interior Doors (Premier Series Only)
- Garage: Garage Door Opener
- Garage: Garage Door Opener Wireless Keypad
- HVAC: Air Conditioner - PreWire not previously selected
- Fireplace: (Direct Vent) with Mantel and Stone Surround
- Exterior Landscape: Backyard Landscaping. Up to a 60-ft wide lot
- Kitchen: Farm Sink - Stainless Steel Single Bowl
- Kitchen: Upgrade Faucet to Moen Arbor SRS
- Bathroom: Freestanding Soaker Tub
- Price Improvement 1



**541-833-9119**

*In a continual effort to improve our product, MonteVista Homes reserves the right to change product design, features, materials, floor plans, specifications, prices and terms without prior notice. Square footage stated or implied are approximate. Images may be representative of future home and show what's possible not what's included. Seller is a licensed real estate broker in the State of Oregon.*

CCB#203709

