

MCCLANNAHAN SUMMIT

THIELSEN PREMIER
LOT 7

401 Taft St. Umatilla, OR 97882

🏠 4 Bedrooms 🚿 2.5 Bathrooms 🏠 2,373 Sq. Ft. 🚗 2 Car Garage 💰 519,900

MOVE-IN READY



T - Traditional, 2 Car



- *\$25k Incentive if the home closes by 12/15/24 (see sales agent)
- Primary Suite On Main Level
- Walk in Closet in Primary
- Great Room with Gas Fireplace
- Upstairs Bonus Room / Loft
- Kitchen Island and Pantry
- 9 Foot Ceilings throughout Main Level
- Quartz Countertops throughout Home
- Stainless Steel Appliances
- Covered Front Porch

 **MonteVista Homes &
PacWest Realty Group**

541-833-9119

In a continual effort to improve our product, MonteVista Homes reserves the right to change product design, features, materials, floor plans, specifications, prices and terms without prior notice. Square footage stated or implied are approximate. Images may be representative of future home and show what's possible not what's included. Seller is a licensed real estate broker in the State of Oregon. CCB#203709



MCCLANNAHAN SUMMIT

THIELSEN PREMIER LOT 7

401 Taft St. Umatilla, OR 97882

🏠 4 Bedrooms

🚿 2.5 Bathrooms

🏠 2,373 Sq. Ft.

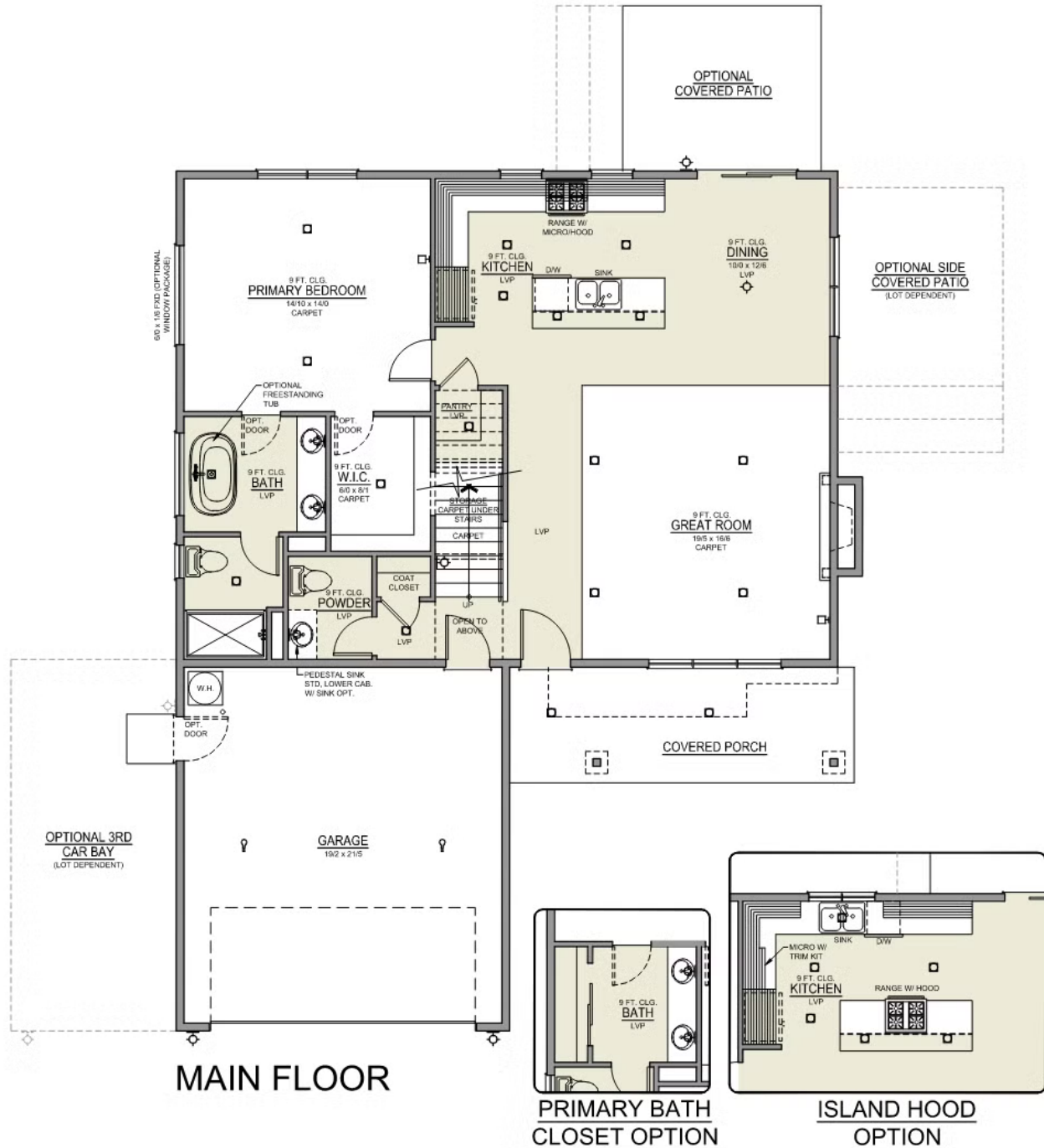
🚗 2 Car Garage

💰 519,900

Thielsen 2-Car

2,373 Sq. Ft.

4 Bedroom, 3 Bath



MCCLANNAHAN SUMMIT

THIELSEN PREMIER
LOT 7

401 Taft St. Umatilla, OR 97882

4 Bedrooms 2.5 Bathrooms 2,373 Sq. Ft. 2 Car Garage 519,900

Thielsen 2-Car
2,373 Sq. Ft.
4 Bedroom, 3 Bath



UPPER FLOOR

MCCLANNAHAN SUMMIT

OPTIONS

THIELSEN PREMIER

LOT 7

401 Taft St. Umatilla, OR 97882

 4 Bedrooms  2.5 Bathrooms  2,373 Sq. Ft.  2 Car Garage  519,900

- Package: Tech Package Pre Wire - Includes Panel, 110 outlet, 1 Dual Wall Plate (Coax & Ethernet) in Great Room
- Package: Tech Package Additional Drop - Additional Dual Wall Plate (Coax & Ethernet) Must Specify Room Location.
- Kitchen: Island Range with Hood. 36" Cabinets. Painted Kitchen & Bathroom Cabinets. Sliding Window over the sink.
- Laundry Room Upper Cabinets - PAINTED - 30" cabs
- Laundry Room Lower Cabs With Quartz Top and Backsplash With Optional Sink & Pull-Out Faucet SRS - PAINTED
- Concrete Flatwork Broom Finished
- Quartz Counters and Backsplash in Kitchen
- 220 Dedicated Outlet - 50 AMP - Hot Tub Disconnect
- Ceiling Fan - Wiring & Fixture
- Holiday Lighting Package - Dedicated 110 with (2) outlets under the eaves & interior switch
- Recessed LED: Add 2 + Dimmer in Primary Bed
- Fencing: 6-ft Shadow Box Cedar - 50-ft Min Order
- Fencing: White Vinyl - 6' tall (50 ft Min Order)
- Fencing: Walk Gate - White Vinyl - 6' tall
- Fencing: 4-ft Walk Gate - Dogear Cedar
- Fencing - 4' "Classic": Black Aluminum with Spears
- Fencing Gate - 4' "Classic": Black Aluminum with Spears
- Linen Closet In Lieu Of Freestanding Tub
- Man Door: Exterior door from garage to outside - Includes exterior coach light.
- Garage Door Opener
- Garage Door Opener Wireless Keypad
- Air Conditioner - PreWire not previously selected
- Fireplace (Direct Vent) with Mantel and Stone Surround
- Gas Stub: BBQ or Dryer
- Insulated Garage - 2 Car: Walls, Ceiling and Garage Door.
- Backyard Landscaping: Up to a 60-ft wide lot
- Stone on all Front Column(s)
- Stone Garage Wing Wall - 2 Car
- Farm Sink: Stainless Steel Single Bowl
- Faucet: Grohe Concetto Faucet
- Shower Enclosure: 5/0 Bypass



541-833-9119

In a continual effort to improve our product, MonteVista Homes reserves the right to change product design, features, materials, floor plans, specifications, prices and terms without prior notice. Square footage stated or implied are approximate. Images may be representative of future home and show what's possible not what's included. Seller is a licensed real estate broker in the State of Oregon.

CCB#203709

