

Distinct Collection

THIELSEN DISTINCT

 4 Bedrooms

 2.5 Bathrooms

 2,373 Sq. Ft.

 3 Car Garage



X - Craftsmen



Y - Modern



Z - Farmhouse



- Primary Suite on Main Level with Walk-in Closet
- Great Room with Gas Fireplace
- Upstairs Bonus Room / Loft
- Kitchen Island with bar seating

- Kitchen Pantry
- 9 Foot Ceilings throughout Main Level
- Quartz Countertops throughout Home
- Stainless Steel Appliances



In a continual effort to improve our product, MonteVista Homes reserves the right to change product design, features, materials, floor plans, specifications, prices and terms without prior notice. Square footage stated or implied are approximate. Images may be representative of future home and show what's possible not what's included. Seller is a licensed real estate broker in the State of Oregon. CCB#203709



4 Bedrooms

2.5 Bathrooms

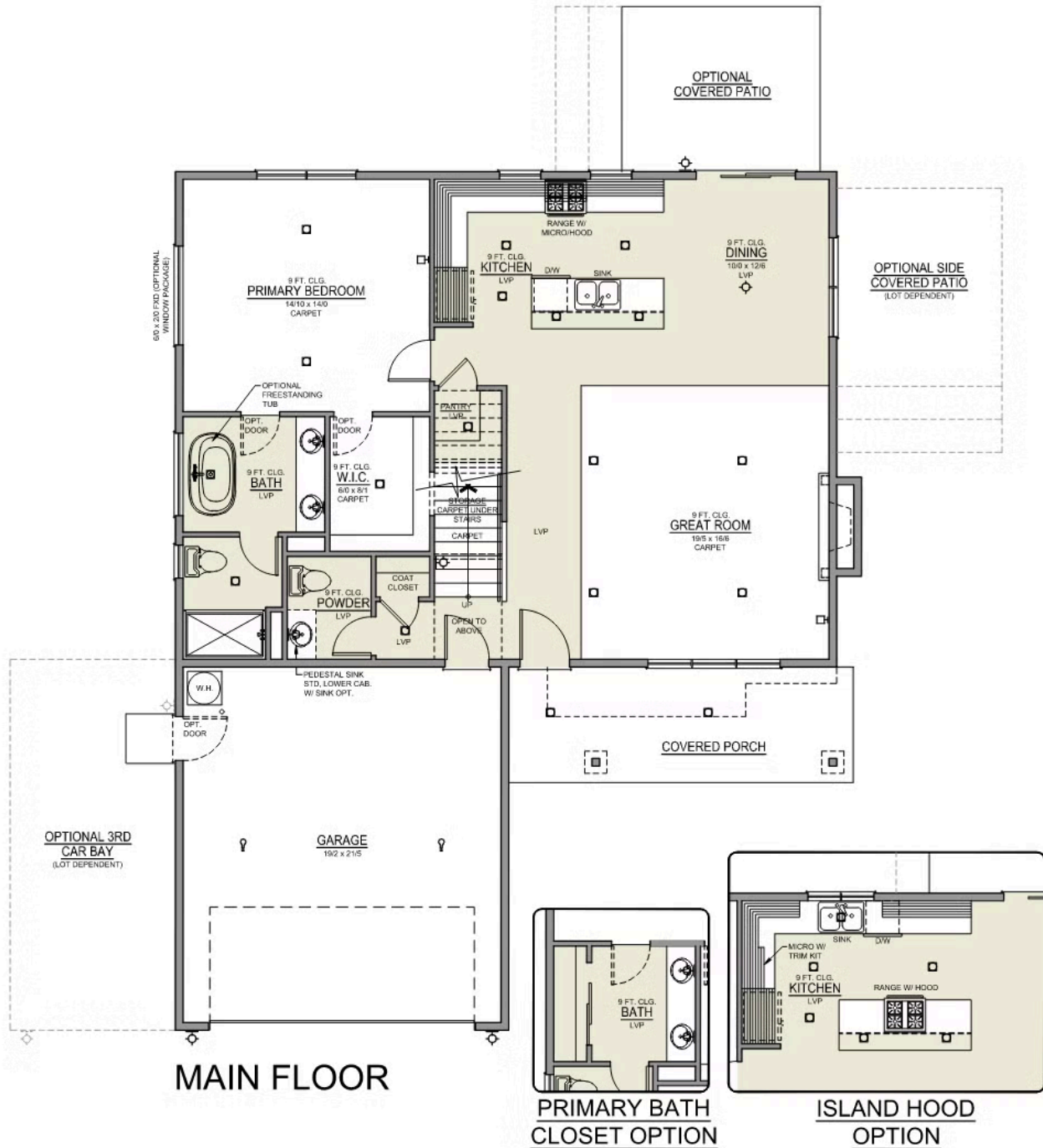
2,373 Sq. Ft.

3 Car Garage

Thielsen 2-Car

2,373 Sq. Ft.

4 Bedroom, 3 Bath



🛏️ 4 Bedrooms

🚿 2.5 Bathrooms

🏠 2,373 Sq. Ft.

🚗 3 Car Garage

Thielsen 2-Car

2,373 Sq. Ft.

4 Bedroom, 3 Bath



UPPER FLOOR